

# EDUCATIONAL SPECIFICATION

## HAGEN ROAD ELEMENTARY

Grades Pre-K – 5

Modernization

Initial Student Stations (K-5): 809

Initial Student Stations (Pre-K): 80

Initial Student Stations Total: 889

FISH Capacity: 889

Program Capacity (K-5): 714

Core Facilities: 960

Future Student Stations: 151

Total Student Stations (Pre-K-5): 1040

THE SCHOOL DISTRICT OF  
PALM BEACH COUNTY, FLORIDA



Mr. Tom Lynch, Chairman  
Mr. Bill Graham, Vice Chairman  
Monroe Benaim, M.D.  
Mrs. Paulette Burdick  
Mr. Mark Hansen  
Dr. Sandra Richmond  
Debra Robinson, M.D.

Art Johnson, PhD  
Superintendent

April 2006

**TABLE OF CONTENTS**

INTRODUCTION .....1

PHILOSOPHY AND GOALS.....2

FACILITY LIST BY AREAS (Exhibit A).....6

GENERAL CONSIDERATIONS .....11

GENERAL SECURITY CONSIDERATIONS.....20

SITE DEVELOPMENT.....22

TRAFFIC CONTROL .....23

ELEMENTARY PROGRAM DESCRIPTION.....24

ADMINISTRATIVE / STUDENT SERVICES/GUIDANCE .....26

ART.....37

**CLASSROOMS**

    KINDERGARTEN .....43

    PRIMARY .....49

    INTERMEDIATE.....53

    SKILLS DEVELOPMENT LABORATORY .....57

CUSTODIAL.....62

EXCEPTIONAL STUDENT EDUCATION.....69

FOOD SERVICES/MULTIPURPOSE .....82

LIBRARY MEDIA CENTER .....88

MUSIC.....102

PHYSICAL EDUCATION.....107

**TABLE OF CONTENTS**

RESOURCE ROOM.....113

RESTROOMS.....117

STAGE/SUPPORT .....118

TEACHER PLANNING.....123

FACILITY SPACE SUMMARY (Exhibit B) .....127

Note: NSF throughout document refers to Net Square Feet.

**INTRODUCTION**

These Educational Specifications are intended for use as a planning guide by architects and others responsible for developing physical facilities in Palm Beach County. The general concept embodied in the specifications is to provide general and adequate details for proposed spaces while leaving ample flexibility for creativity and options in design by the architects.

Philosophy and goals of the School Board of Palm Beach County are provided as general directions for programs in the school district and are followed by a listing of general considerations. The facility list is intended to be a summary of the spaces to be provided, but is sufficiently flexible to accommodate design requirements and compatibility with adjacent space.

Specifications for the various program areas include a common listing of informational categories within each of the areas. Specific information relative to each particular area is included under various headings as follows:

- I. Program Philosophy
- II. Program Goals
- III. Program Activities
- IV. Organizational Nomenclature
- V. Innovations, Experimental Ideas, Other Planned Uses
- VI. Justification for Variance from SREF Requirements
- VII. Program Facilities List
- VIII. Program Furniture and Equipment
- IX. Special Considerations

The graphic representations of space relationships are intended only to establish adjacencies and not to set design. Spaces shall be arranged for the various program areas in a configuration compatible with traffic control, site needs and the following considerations:

- 1. Facilities shall be as functional as possible; that is, they shall be organized in a manner responsive to educational programming requirements in an orderly, economical way.
- 2. Facilities shall be as responsive as possible to long-term maintenance goals. The architect shall endeavor to produce a product with the lowest possible life cycle cost.
- 3. Facilities shall be as vandal-resistant as is possible within realistic budget constraints.
- 4. Facilities shall be as aesthetically pleasing as possible, considering neighborhood, shape, materials, colors, etc.
- 5. Facilities shall be designed to provide adequate student movement (circulation) without unnecessary waste.

Special attention is directed to planning for community utilization of the plant and campus, maximum energy conservation and capital budget restraints.

**PHILOSOPHY AND GOALS**

**I. PROGRAM PHILOSOPHY**

The Board's philosophy is to provide an educational system which is instructionally sound and environmentally stimulating enough to attract and maintain high-quality professional, technical and administrative employees. This system is designed to earn the respect of the Palm Beach County community, the state and the nation.

The Board believes that successful implementation of its philosophy is highly dependent upon a positive, active, working partnership which includes the Board, administrators, teachers, staff, students, parents, community, business and industry. For this reason the support requirements for elementary specifications were developed by a participatory process involving committees of educators, the Department of Elementary Education, and various departments of the School District of Palm Beach County.

**II. PROGRAM GOALS**

**A. Student Goals** - Students shall acquire, to the extent of their individual physical, mental and emotional capacities, a mastery of the basic skills required in the curriculum. Address the Goal 3 Standards, the Florida Sunshine State Standards, benchmarks and grade level expectations, Achievement for All, Key Results and District Goals in the Program Philosophy description.

1. **Communication and Learning Skills** - All students shall be provided an opportunity to do the following:

- a. Develop and apply basic skills in reading, writing, speaking, viewing and listening.
- b. Gain a general education in broader fields of language arts, social studies, science, mathematics, humanities and vocational education.
- c. Develop a desire for learning.
- d. Develop a capacity for self-evaluation and self-direction.
- e. Examine, analyze, evaluate and utilize various kinds of information.

2. **Human Relations** - All students shall be provided an opportunity to do the following:

- a. Develop a pride of accomplishment and a feeling of self-worth.
- b. Learn to respect and get along with people.

3. **Citizenship Education** - All students shall be provided an opportunity to do the following:
  - a. Develop good character and self-respect.
  - b. Be responsible citizens.
  - c. Participate in democratic experiences and processes.
  
4. **Career Education** - All students shall be provided an opportunity to do the following:
  - a. Develop a positive attitude toward work.
  - b. Develop respect for the dignity of all occupations.
  - c. Acquire information needed for making appropriate job selections.
  - d. Develop the ability to use information as it relates to a particular vocation.
  
5. **Home and Family Relationships** - All students shall be provided an opportunity to do the following:
  - a. Develop an appreciation of the family as a social institution and as a basic unit of society.
  - b. Acquire skills and attitudes for management of family resources.
  - c. Acquire and understand the skills of family living.
  
6. **Mental and Physical Health** - All students shall be provided an opportunity to do the following:
  - a. Develop good health habits and an understanding of the conditions necessary for maintenance of physical and emotional well-being.
  - b. Acquire knowledge of basic psychological and sociological factors affecting human behavior and mental health.
  - c. Develop competence for adjusting to changes.
  - d. Recognize and work to solve environmental health problems.

7. **Aesthetic and Cultural Appreciation** - All students shall be provided an opportunity to do the following:
  - a. Develop an understanding and appreciation of human achievement in natural sciences, social sciences, humanities and the arts.
  - b. Broaden interests and prepare for productive use of leisure time.
  - c. Develop skills and creative abilities for self-expression.

**B. Management Goals**

1. **General Management** - The school district shall refine, implement and utilize management practices which will provide the following:
  - a. Planning and evaluation programs which will ensure accurate and adequate information for decision-making.
  - b. Administrative procedures which ensure that program planning, budgeting and evaluation systems are integrated and cyclical in nature.
  - c. Information services that promote timely acquisition of accurate information regarding district policies, procedures and activities which fulfill the needs of the district and the public.
  - d. Administrative and instructional support for school-based management procedures and techniques.
  - e. System-wide support services for functions, processes and programs.
  - f. Continuing development, refinement, implementation and evaluation of instructional materials, processes and components of the curriculum.
  - g. Flexible organizational structure which clearly defines and delineates authority, responsibility and accountability.
  - h. Fiscal integrity in budgeting and business affairs.
2. **Personnel Management** - The school district will develop and maintain the following:
  - a. Practices and programs to recruit the best qualified personnel for all positions.

**DRAFT SCHEDULED FOR 04/19/06 BOARD MEETING**

- b. Programs to orient all employees properly to their job responsibilities, operation and organization of their units, and organization of the school system.
- c. Staff development programs to update employees in their chosen fields and to enhance their professional and career growth.
- d. Develop programs to teach administrators at all levels how to achieve excellence in managing people, including performance, planning, evaluation and counseling.
- e. A system to identify high potential employees and their readiness status to qualify for higher career positions within the district.
- f. Practices and programs to attain effective affirmative action.
- g. Practices and systems to establish realistic position descriptions for each level and equitable compensation for those levels.



**Facility List by Areas**

**Hagen Road Elementary School**  
**Grades Pre-K – 5**  
**Initial Student Stations (K-5): 809**  
**Initial Student Stations (Pre-K): 80**  
**Initial Student Stations Total: 889**  
**FISH Capacity: 889**  
**Program Capacity (K-5): 714**  
**Core Facilities: 960**  
**Future Student Stations: 151**  
**Total Student Stations (Pre-K-5): 1040**

Design Codes	Spaces	Description	SREF Sq. Ft. Total	Proposed		Proposed	
				Sq. Ft. Per Unit	Sq. Ft. Total	Stu. Sta. Unit	Stu. Stat. Total.
<b>ADMINISTRATIVE</b>							
300	1	Principal (50 NSF from conference room)	250		300		
301	4	Administrative Office		175	700		
302	1	Bookkeeper			125		
303	1	Principal's Secretary			158		
304	1	General Reception/Secretary			750		
305	1	Production/Workroom			384		
312	1	Computer Area/Data Processor			144		
306	1	Conference (50 NSF to principal and 200 NSF to Guidance Conference)			350		
307	1	Clinic (Board approved prototype)			525		
308	1	Administrative Storage			480		
309	1	Records Vault/Student Records			288		
368	1	Textbook Storage			336		
314	1	Itinerant/Attendance Clerk			125		
301	1	School Police/Video Surveillance			175		
819/820		Restrooms, staff (out of allotment)					
822/823		Restrooms, public (out of allotment)					
		<b>Subtotal</b>			<b>4,840</b>		
<b>STUDENT SERVICE/GUIDANCE</b>							
301	1	Counselor			175		
314	1	Itinerant			125		
306	1	Conference (from administrative conference)			200		
		<b>Subtotal</b>			<b>500</b>		
		<b>TOTAL</b>			<b>5,340</b>		
<b>ART</b>							
050	1	Laboratory			1,000		
805	1	Kiln			80		
808	1	Material Storage			100		
812	1	Project Storage			150		
814	1	Student Restroom - M/F			45		
		<b>TOTAL</b>			<b>1,375</b>		

Facility List by Areas

**DRAFT SCHEDULED FOR 04/19/06 BOARD MEETING EXHIBIT A**

Design Codes	Spaces	Description	SREF Sq. Ft. Total	Proposed		Proposed	
				Sq. Ft. Per Unit	Sq. Ft. Total	Stu. Sta. Unit	Stu. Sta. Total.
<b>KINDERGARTEN</b>							
001	8	Kindergarten Classroom		900	7,200	18	144
808	8	Material Storage		45	360		
348	4	Shared Kitchen		100	400		
811	8	Outside Storage (combine with ESE)		50	400		
814	8	Student Restrooms - M/F		45	360		
		<b>TOTAL</b>			<b>8,720</b>		<b>144</b>
<b>PRIMARY</b>							
001	16	Primary Classroom		900	14,400	18	288
808	16	Material Storage		45	720		
814	16	Student Restroom - M/F		45	720		
		<b>TOTAL</b>			<b>15,840</b>		<b>288</b>
<b>INTERMEDIATE</b>							
002	16	Intermediate Classroom		900	14,400	22	352
808	16	Material Storage		45	720		
815/816	16	Student Restrooms, shared (out of allotment)					
		<b>TOTAL</b>			<b>15,120</b>		<b>352</b>
<b>SKILLS DEVELOPMENT LABORATORY</b>							
010	2	Skills Laboratory (Future 3rd lab will have student stations)		900	1,800		
808	2	Storage		45	90		
814	2	Student Restroom - M/F		45	90		
		<b>TOTAL</b>			<b>1,980</b>		<b>0</b>
<b>CUSTODIAL</b>							
330/331		Central Receiving, Toilets, Showers, Custodial Closets			1,334		
333	1	Flammable Storage			155		
334	1	Equipment Storage			500		
334	1	Golf Cart Storage (from dining)			150		
		<b>TOTAL</b>			<b>2,139</b>		
<b>EXCEPTIONAL STUDENT EDUCATION</b>							
062	8	Self Contained Classroom for ESE Pre-Kindergarten		900	7,200	10	80
808	8	Material Storage		45	360		
348	4	Shared Kitchen		100	400		
811	8	Outside Storage (combined into one space)		50	400		
814	8	Student Restroom - M/F		55	440		
		<b>Subtotal</b>			<b>8,800</b>		
061	1	Part-Time Classroom		900	900	15	15
808	1	Material Storage		45	45		
814	1	Student Restroom - M/F		45	45		

Facility List by Areas

**DRAFT SCHEDULED FOR 04/19/06 BOARD MEETING EXHIBIT A**

Design Codes	Spaces	Description	SREF Sq. Ft. Total	Proposed		Proposed	
				Sq. Ft. Per Unit	Sq. Ft. Total	Stu. Sta. Unit	Stu. Sta. Total.
		<b>Subtotal</b>			<b>990</b>		
062	1	Self Contained Classroom		900	900	10	10
808	1	Material Storage		45	45		
811	1	Outside Storage (combined into one space with kindergarten)		50	50		
814	1	Student Restroom - M/F		45	45		
		<b>Subtotal</b>			<b>1,040</b>		
066	2	Supplementary Instruction with storage folded into room		200	400		
070	2	Office/Testing/Itinerant		200	400		
		<b>Subtotal</b>			<b>800</b>		
065	1	ESE Resource Room with storage folded into room		520	520		
815/816	1	Student Restroom (out of allotment)					
		<b>Subtotal</b>			<b>520</b>		
817	1	ESE Changing Room/Restroom			150		
308	1	ESE Department Storage			200		
		<b>Subtotal</b>			<b>350</b>		
		<b>TOTAL</b>			<b>12,500</b>		<b>105</b>
<b>FOOD SERVICE/MULTIPURPOSE</b>							
340	1	Dining/Multipurpose (150 NSF to Custodial Golf Cart Storage)			5,178		
341	1	Kitchen (including office and restroom - prototype)			3,600		
349	1	Chair Storage			192		
316	1	Staff Dining/Lounge			700		
819/820		Staff Restrooms (out of allotment)					
815/816		Student Restrooms (out of allotment)					
		<b>TOTAL</b>			<b>9,670</b>		
<b>MEDIA CENTER</b>							
380	1	Reading Room/Stacks (to include Group Projects, Periodical Storage & Small Group Listening) (150 NSF from Tech Processing)	3,120		3,270		
382	1	Professional Library/Media Production/Copying Room			656		
383	1	AV Storage/Maintenance and Repair/CCTV Storage			660		
381	1	Library Media Specialist's Office & Technical Processing (combined with Library Media Specialist's office)(150 NSF to Reading/Stacks)			349		
385	1	CCTV Studio - Production and Control (100 NSF from Stage Control Booth)(500 NSF for Studio & 275 NSF for Control)	672		772		
821		Staff Restroom - M/F (out of allotment)					
814		Student Restroom - M/F (out of allotment)					
		<b>TOTAL</b>			<b>5,707</b>		

Facility List by Areas

**DRAFT SCHEDULED FOR 04/19/06 BOARD MEETING EXHIBIT A**

Design Codes	Spaces	Description	SREF Sq. Ft. Total	Proposed		Proposed	
				Sq. Ft. Per Unit	Sq. Ft. Total	Stu. Sta. Unit	Stu. Stat. Total.
<b>MUSIC</b>							
055	1	Music Classroom			1,200		
808	1	Material Storage/Reference Room			200		
814	1	Student Restroom - M/F			45		
		<b>TOTAL</b>			<b>1,445</b>		
<b>PHYSICAL EDUCATION</b>							
014	1	Covered Play Area			3,000		
013	1	PE Storage			315		
315	1	Teacher Planning			100		
821		Staff Restroom - M/F (from allotment)					
815/816		Student Restroom - M/F (out of allotment)					
		<b>TOTAL</b>			<b>3,415</b>		
<b>RESOURCE ROOMS</b> (Individual or small group instruction) (1/150 stations per SREF)							
040	4	Resource Room with storage folded into room		390	1,560		
815/816	4	Student Restrooms (out of allotment)					
		<b>TOTAL</b>			<b>1,560</b>		<b>0</b>
<b>RESTROOMS</b> (adjust square footage for FACBC and parity requirements)							
822/823		Public Restrooms			178		
815/816		Student Restrooms (Grades 4 and above)			1,334		
819/820		Staff Restrooms			356		
		<b>TOTAL</b>			<b>1,867</b>		
<b>STAGE</b>							
363	1	Indoor Stage		990	990		
364	1	Stage Storage			480		
317	2	Dressing Room (folded into one space)		240	480		
	1	Control Booth (to CCTV Studio-Production)	100		0		
		<b>TOTAL</b>			<b>1,950</b>		
<b>TEACHER PLANNING</b>							
315	2	General Areas		500	1,000		
		<b>TOTAL</b>			<b>1,000</b>		

For modernization of existing schools and other schools with a high concentration of special program needs additional teaching spaces may be provided through the use of Resource Rooms and ESE Rooms to meet program capacity per the approval on January 21, 2003 of the Charter District Waiver.

**DRAFT SCHEDULED FOR 04/19/06 BOARD MEETING EXHIBIT A**

Design Codes	Spaces	Description	SREF Sq. Ft. Total	Proposed		Proposed	
				Sq. Ft. Per Unit	Sq. Ft. Total	Stu. Sta. Unit	Stu. Stat. Total.
<b>FUTURE</b>							
<b>PRIMARY</b>							
001	6	Primary Classroom		900	5,400	18	108
808	6	Material Storage		45	270		
814	6	Student Restroom - M/F		45	270		
		<b>TOTAL</b>			<b>5,940</b>		<b>108</b>
<b>SKILLS DEVELOPMENT LABORATORY</b>							
010	1	Skills Laboratory (1 lab will have student stations)		900	900	18	18
808	1	Storage		45	45		
814	1	Student Restroom - M/F		45	45		
		<b>TOTAL</b>			<b>990</b>		<b>18</b>
<b>CUSTODIAL</b>							
330/331		Custodial Closets			227		
		<b>TOTAL</b>			<b>227</b>		
<b>EXCEPTIONAL STUDENT EDUCATION</b>							
061	1	Part-Time Classroom		900	900	15	15
808	1	Material Storage		45	45		
814	1	Student Restroom - M/F		45	45		
		<b>Subtotal</b>			<b>990</b>		<b>15</b>
062	1	Self Contained Classroom		900	900	10	10
808	1	Material Storage		45	45		
811	1	Outside Storage		50	50		
814	1	Student Restroom - M/F		45	45		
		<b>Subtotal</b>			<b>1,040</b>		<b>10</b>
065	1	ESE Resource Room w/ storage folded into room		520	520		
815/816	1	Student Restroom (out of allotment)					
		<b>Subtotal</b>			<b>520</b>		
		<b>TOTAL</b>			<b>2,550</b>		<b>25</b>
<b>RESOURCE ROOMS</b>							
040	2	Resource Room with storage folded into room		390	780		
815/816	2	Student Restrooms (out of allotment)					
		<b>TOTAL</b>			<b>780</b>		<b>0</b>
<b>RESTROOMS</b> (adjust square footage for FACBC and parity requirements)							
822/823		Public Restrooms			30		
815/816		Student Restrooms (Grades 4 and above)			227		
819/820		Staff Restrooms			60		
		<b>TOTAL</b>			<b>317</b>		
<b>TEACHER PLANNING</b>							
315	1	General Areas		500	500		
		<b>TOTAL</b>			<b>500</b>		

**GENERAL CONSIDERATIONS**

Use the following documents, as a minimum, in facility design, the latest edition of the Florida Building Code (FBC) with latest revisions, the Florida Fire Prevention Code (FFPC), the SDPBC Educational Specification, District Master Specifications (DMS), District Design Criteria (DDC) and State Requirements for Educational Facilities (SREF).

- A. **Security** - The design shall comply with the DDC – Architectural and Civil.
- B. **Flexibility** - Consider flexibility to allow for future program changes and expansions of the school plant.
- C. **Construction Techniques** - Consider fast and economical construction consistent with long-range maintenance and flexibility requirements of a permanent school plant. Refer to DDC – Architectural.
- D. **Heating, Ventilating and Air-Conditioning (HVAC)** – Design the system(s) in accordance with DDC – Mechanical and the related DMS sections in Division 15.
- E. **Plumbing** - Design the system(s) in accordance with DDC –Plumbing and the related DMS sections in Division 15.
- F. **Building Fire Protection** - Design the system(s) in accordance with DDC – Plumbing and the related DMS sections in Division 15.
- G. **Windows** – Provide windows and window treatments in accordance with DDC – Architectural.
- H. **Floors** – Provide floors in accordance with DDC – Architectural.
- I. **Walls** – Provide walls in accordance with DDC – Architectural.
- J. **Roof** - Provide roofs in accordance with DDC – Architectural.
- K. **Corridors and Student Commons** - Corridor shall comply with Florida Building Code, DDC and DMS.
- L. **Sound Treatment** – Acoustically treated walls and ceilings shall be provided as necessary for the intended use of the space, refer to DDC - Architectural.
- M. **Hot Water** - Hot water shall be provided as indicated per code, refer to DDC – Mechanical and Plumbing and DMS.
- N. **Lighting** - Classroom lighting shall be controlled with alternate switching of light fixtures. Provide lighting in accordance with DDC – Electrical and DMS.

- O. **Electrical** - Provide Electrical System in accordance with DDC – Electrical and DMS.
- P. **Student Toilets** - Follow the DDC – Architectural and Plumbing for locating, designing and equipping student toilet facilities.
- Q. **Entrances** - Entrance shall comply with the requirement of the DDC – Architectural.
- R. **Lockers** - Lockers shall be located in air-conditioned corridors. Refer to DMS.
- S. **Clock and Bell System** - GPS master satellite clock system (wireless) shall be utilized throughout the facility and provided by the contractor. Bell system shall have automatic and manual operation.
- T. **Intercommunications System** - Provide two-way intercom system in accordance with the DDC - Electrical.
- U. **Instructional Television Systems** – Provide ITV system in accordance with the DDC – Electrical and DMS sections in Division 16.
- V. **Colors/Finishes** - Harmonizing colors shall be used to enhance the design of the plant. The architect shall submit colors for review and approval by the SDPBC Department of Program Management. The exterior of the buildings shall use a maximum of three (3) different colors and the interior of the buildings shall use a maximum of four (4) different colors with one of the four interior colors serving as the accent color for the instructional space. Exterior materials and coatings shall be graffiti resistant and easily cleaned to the maximum extent practical. The architect shall submit finishing schedules and mill work for review and approval by the SDPBC Department of Program Management.
- W. **Display Case** - A built-in recessed display case with tackable backboard shall be located in the entrance foyer, music area and art area and library media center. Provide safety glass. The recessed display case shall be 6’W x 4’H and 36” off the floor.
- X. **Communications (Voice and Data)** – Provide Communication systems in accordance with the DDC – Electrical.
- Y. **Safety** – Provide safety devices in accordance with DDC, DMS and FBC.
- Z. **Site Fire Protection** - Refer to DDC, DMS, FBC and FFPC.
- AA. **Automobile Parking** - Provide parking in accordance with traffic control section, DDC – Architectural and Civil. Visitor parking shall be provided near the entrance to the administrative suite.
- AB. **Water Outlets** - Provide hose bibbs in accordance with the DDC – Plumbing.

General Considerations

- AC. **Potable Water** - System shall be designed in accordance with the DDC – Civil and Plumbing.
- AD. **Pavement, Site Improvements** – Provide all pavement, markings, signage and other site improvements in accordance with DDC - Civil.
- AE. **Sanitary Sewer** - System shall be designed in accordance with the DDC – Civil.
- AF. **Storm Water Drainage** - System shall be designed in accordance with the DDC – Civil.
- AG. **Irrigation Water** - System shall be designed in accordance with the DDC – Civil and SFWMD.
- AH. **Structural** - System shall be designed in accordance with the DDC – Structural.
- AI. **Bulletin Boards/Tackboard** - In addition to any bulletin boards specified in departmental specifications, the contractor shall provide eight lineal feet of tackboard in the corridor outside each classroom, resource room, music room, art room, media center and administration. Bulletin boards/ tackboards shall not be less than 36" vertical measurement.
- AJ. **Ceiling Heights** - Ceiling height shall be in accordance with DDC – Architectural.
- AK. **Crowd Control** - The design shall reflect good crowd control. Consideration shall be given to large groups that enter and leave the site at times of public and school events.
- AL. **Energy Conservation** - The building and its systems shall be designed in accordance with DDC - Mechanical.
- AM. **Community School** - The general plan and campus design shall be arranged to permit and facilitate use of all appropriate school facilities by community agencies when these spaces are not in use for the regular school program. Community school considerations include ready access from parking lots to all athletic and recreational facilities, meeting rooms, music facilities, media center, cafeteria, and community school coordinator's office. Offices(s) shall be located near the parking lot with adequate lighting and natural surveillance.
- AN. **Exterior Building Materials** - Major exterior building materials shall be fully documented in the design phase of project development for review and approval by the SDPBC Superintendent or his/her designee. Exterior materials and coatings shall be graffiti resistant and easily cleaned to the maximum extent practical. Refer to DDC – Architectural.
- AO. **Instructional Technology** - Provide conduits, wiring, data outlets and receptacles

General Considerations



**DRAFT SCHEDULED FOR 04/19/06 BOARD MEETING**

for computer network requirements. Provide spaces and special air-conditioning for computer- related electronics. Refer to DDC.

- AP.** **School Site and Play fields** - The school site and play fields shall be designed in accordance with DDC – Architectural and Civil.
- AQ.** **Working Heights** - Provide built-in equipment and furnishings in accordance with DDC – Architectural.
- AR.** **Ventilation** – Design Ventilation system in accordance with the DDC – Mechanical.
- AS.** **Program Furniture and Equipment** - Program furniture and equipment list, in this document, is design guide for determining space requirements and it is not intended as an ordering guide. Use existing furniture and equipment where possible.
- AT.** **Natural Gas** – Refer to DDC – Plumbing.
- AU.** **Design Notebooks** - Refer to DDC – Mechanical.
- AV.** **Communications Room** - Every facility shall have one Communication Equipment Room (CER) and several Communication Closet Rooms (CCR) as necessary to comply with the DDC – Electrical and Mechanical.
- AW.** The Architect/Engineer shall request a clarification from the Senior Project Administrator (SPA) of any conflicts between the Educational Specification, DDC or DMS.
- AX.** For elementary schools, contractor to provide a lighted double sided marquee/school sign, 5’x10’ in size, with adequate electrical service stubbed out for future LED message area upgrades.
- AY.** Refer to the DDC – Electrical and DMS with regards to ceiling projectors raceway system. Contractor to provide ceiling projectors raceway system with all necessary wiring and properly supported projector mounting brackets in all instructional spaces and other designated areas. Obtain the latest detail of installation and specifications from the District’s Network Services Department.
- AZ.** Contractor to provide and install flag pole holders with proper backing in all necessary areas. Contractor to provide and installed AV screens and brackets with proper backing in all necessary areas. Provide proper backing for all mounted equipment where necessary.
- BA.** Each school shall have a lightning detection device system.
- BB.** All built-in counters shall have wire management holes (grommets) to service telephones and computer hook-ups.

General Considerations

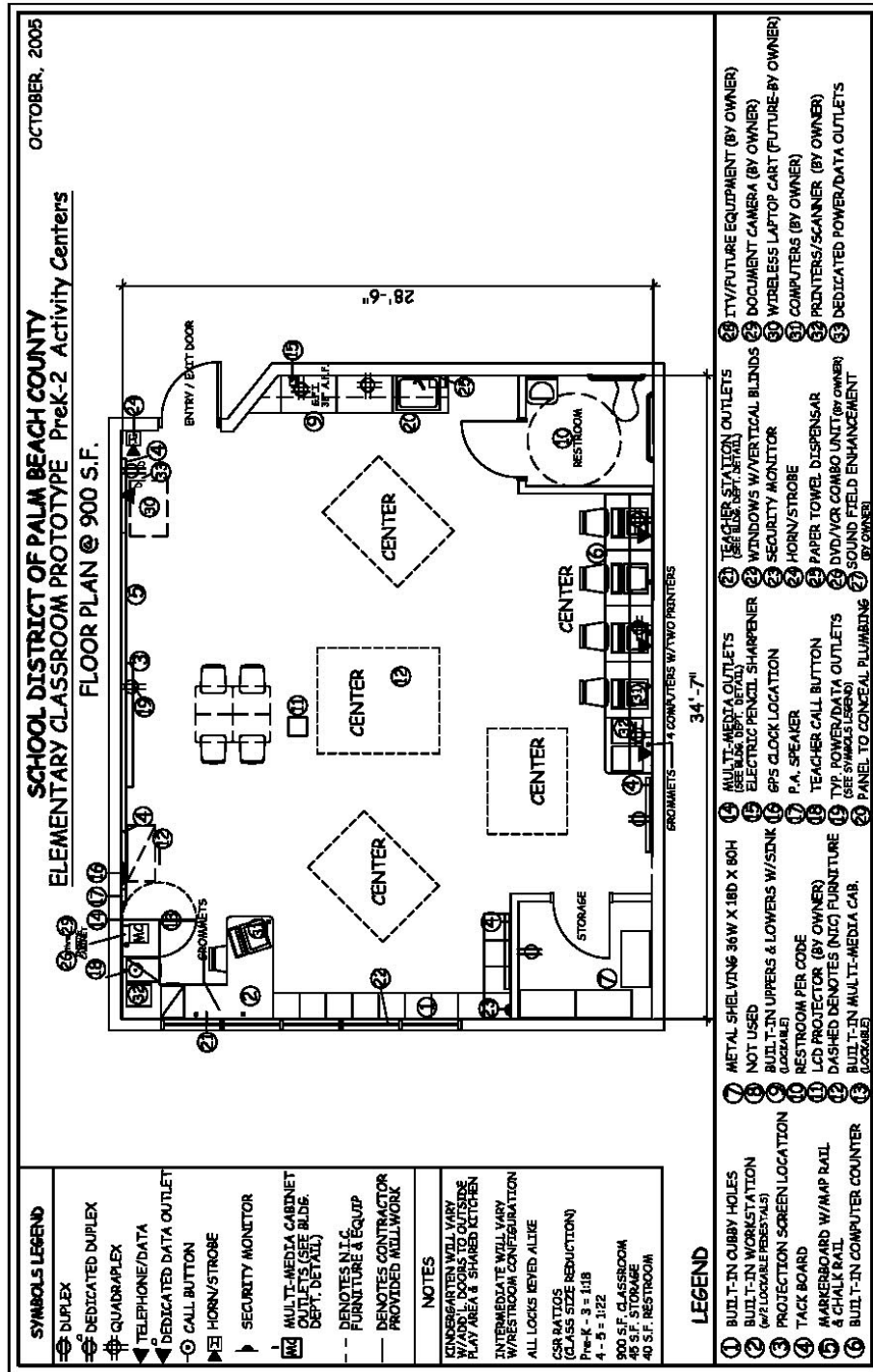
**DRAFT SCHEDULED FOR 04/19/06 BOARD MEETING**

- BC.** When possible, the “head-in” equipment shall be located in the production room in the Library Media Center. The equipment should not be located in the control room of the CCTV studio.
- BD.** Schools under modernization and/or comprehensive addition shall have the interior signage comply with the building and room numbering of the School District’s guidelines. Room names and numbers on signage shall be coordinated with SDPBC Interior Design Coordinators.
- BE.** Contractor to provide a 30’ high flagpole with two complete rope systems. The flagpole shall be located near the main office/administration.
- BF.** Refer to the DDC – electrical and DMS with regards to conduit and junction box for sound field enhancement system and LCD Projector.
- BG.** Classrooms, instructional areas and other designated areas shall be equipped with built-in Multimedia Cabinets, provided by the contractor, to house ITV equipment, DVD/VCR, Sound Field Enhancement, Document Camera and other multimedia equipment. The Multimedia Cabinet shall be 24”w x 24”d x 60”h with a 270° hinged lockable door; open back for access to outlets located on the wall; five (5) adjustable shelves with 3” chase for wire/cord wire management; routed vents at front and one side of unit 4 – 6”x1/2” vents at 1” O.C. and 3” grommet on top of unit in center of cabinet. (Refer to prototype classroom and prototype Multimedia Cabinet drawings)
- BH.** Classrooms, instructional areas and other designated areas shall be equipped with built-in workstation, provided by the contractor. The workstation shall include a U shape work area with three (3) grommets and two (2) lockable pedestals (box/box/file and file/file). (Refer to prototype classroom drawing)
- BI.** All upper cabinets shall have a 12” clear inside depth to store standard binders.
- BJ.** The Beacon Center provides after school programs along with community activities for the surrounding neighborhood. If a school has been identified to operate a Beacon Center, the architect shall provide an administrative office (175 NSF) with data, electric, phone and fax line and a storage room (250 NSF) with data, electric and phone from the overall dining room/multipurpose NSF. Both spaces shall be lockable. The storage room will be used as a storage room and a place to connect and charge the wireless laptop computer cart(s). Both the office and storage room shall be located near the entrance of the school with an entrance that is separate from the main office. The architect shall work with District staff with regards to the placement of the Beacon Center on the plans. The dining room/multipurpose shall be equipped with a wireless computer system.

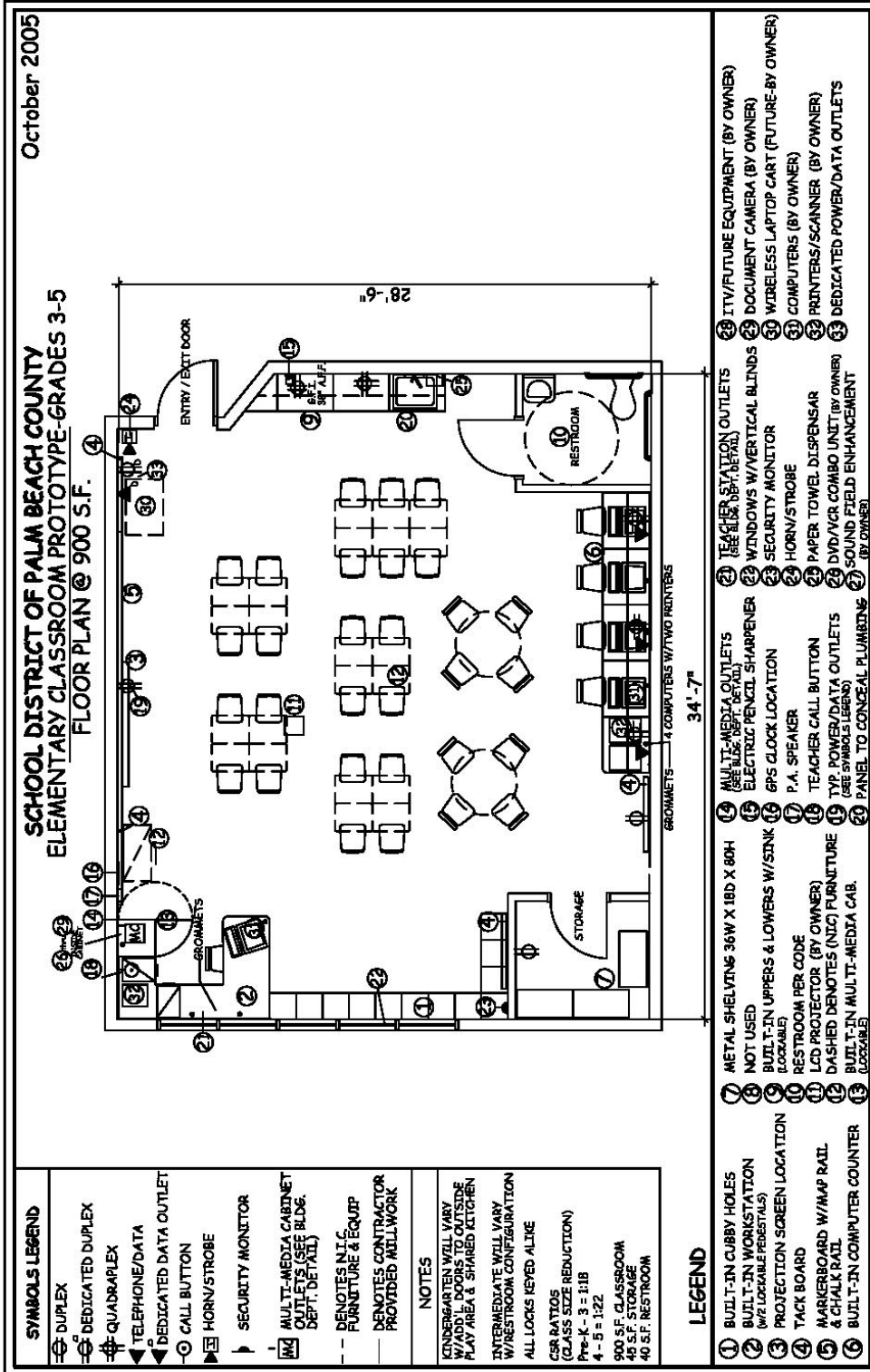
General Considerations

**DRAFT SCHEDULED FOR 04/19/06 BOARD MEETING**

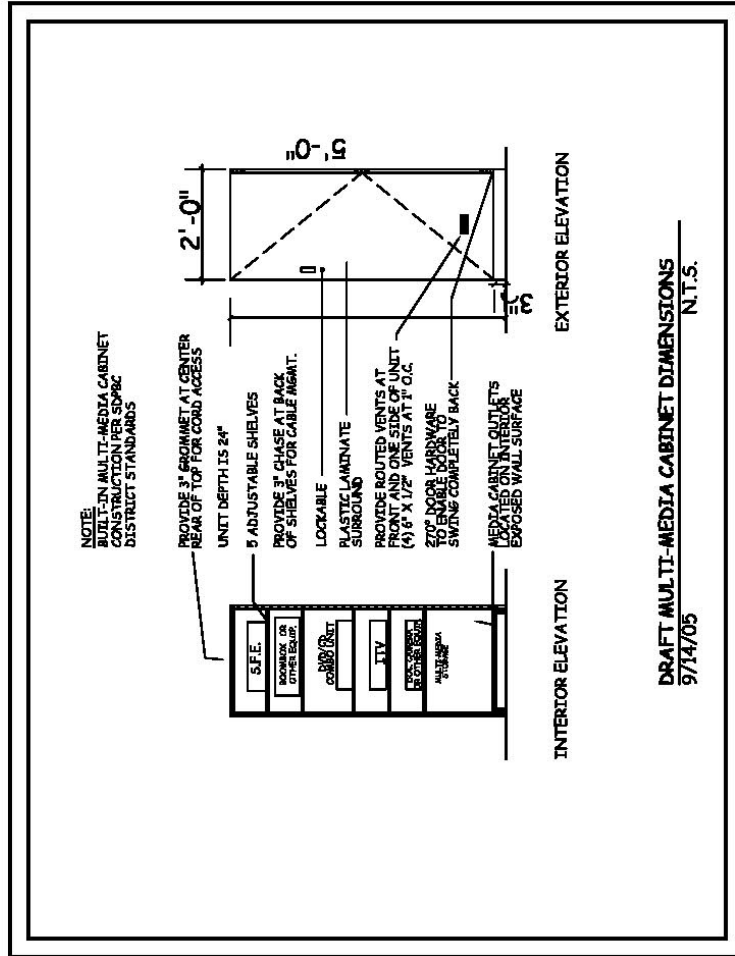
- BK.** If an Elementary School has been identified to operate a Reading Recovery Training Center, classrooms and/or Resource Rooms will be used for this program. The architect shall work with District staff with regards to the placement of additional furniture, fixture, equipment (FF&E), built-ins, utilities, data, electrical, etc. for the design. The architect shall work with District staff with regards to the placement of the Reading Recovery Training Center on the floor plan.
  
- BL.** Each school shall have an Automated External Defibrillator which will be provided by the owner. The location and signage will be determined by the SDPBC Risk Management Department.



General Considerations



General Considerations



General Considerations

**DRAFT SCHEDULED FOR 04/19/06 BOARD MEETING**  
**GENERAL SECURITY CONSIDERATIONS**

- A. Meet with SDPBC Department of School Police at first stage, site and building layout development, to discuss project specific security issues.
- B. The area for loading/unloading of students shall be designed for easy supervision with no mixture of pedestrian and vehicles.
- C. Open parking areas shall have good natural surveillance. Provide a fenced staff parking area that can be locked during the day where local conditions warrant.
- D. Site access shall consist of a primary road and secondary access in the event the primary road is blocked.
- E. School sites shall have perimeter security fencing preventing access to walkways and courtyards when facility is not occupied, but allow for public use of exterior athletic facilities. Design exterior doors to prevent unauthorized entry by minimizing key locks and hardware on doors which would not be used for the purpose of essential entry but are installed for emergency egress.
  - 1. Doors which are determined to be essential entry shall be provided with key access and include card access control and hardware as per current SDPBC policy, guidelines and the project specific plan review process.
  - 2. Entire perimeter of site shall be fenced or wall barriered and gated to a minimum height of six (6) feet. Provide the delivery/receiving/service entry gates(s) with electric latching/lock hardware and all associated hardware to allow the control of it from the card access system.
  - 3. Create an interior perimeter barrier so that all open area students and staff commons and their thoroughfares, i.e. courtyards, areas between buildings, portable classrooms, PE fields, etc. are blocked from entering except through an access controlled main public entry. Create a structurally mounted set of metal entry doors in the interior perimeter barrier to become the focal point of all public entry. These doors shall be located in the entry thoroughfare between the visitor parking area and the administration reception area. At the public entry, provide card access, video surveillance; remote intercom and electric controlled lock hardware as per current SDPBC policy, guidelines and the project specific plan review process. All other egress points through this open area interior perimeter barrier shall have the same type of structurally mounted metal entry doors. No fence gates allowed.
- F. Use maze-type of entry system to restrooms where appropriate, i.e., gymnasium. Do not use maze-type of entry for exterior locations.
- G. Bicycle parking compound shall be located in an area with good natural surveillance and have an 8' fence. Provide racks to which bicycles can be locked. Should be visible from office staff or classroom windows.

**DRAFT SCHEDULED FOR 04/19/06 BOARD MEETING**

- H. When designing courtyards, consider physical division of space, i.e. benches, planters, to avoid congregation of large groups of students and to allow smooth flow of traffic. Position amenities to create multiple access and passageways. Planters shall not be placed in such a way as to allow its contents to block clear vision of common areas and courtyards. Limit the heights of all trees and shrubbery that are planted between the buildings and all thoroughfares, congregate areas, bicycle and auto parking spaces, courtyards, portables, entry/exit points throughout the interior perimeter barrier, playfields, etc. not to exceed three feet (3'), for a distance of fifty feet (50'). Consideration should be taken when locating landscaping to assure that it will not block lighting.
- I. Locate teacher planning areas throughout the campus to provide supervision for potential problem areas. Acceptable locations are at ends of buildings and center of hallways.
- J. Provide zoned lighting to allow for security during community school activities at night. Consider use of motion detector lights in isolated areas.
- K. Design roofs without obstructions that could conceal persons from view. Roof access shall be properly secured and lockable.
- L. Provide two (2) KNOX Box for emergency key access to the site and building(s), one for school police and one for fire department. Coordinate with local fire department and district personnel.



**SITE DEVELOPMENT**

- A. All site plans and landscape plans shall comply with SDPBC **Technical Requirements Manual for Site Plans**.
- B. Refer to **District Design Criteria (DDC)**.

**DRAFT SCHEDULED FOR 04/19/06 BOARD MEETING**  
**TRAFFIC CONTROL**

The following traffic-related activities occur on the school site:

1. Approximately, 10-18 school buses will enter and exit the site at the beginning and end of each school day.
2. Approximately, 130 staff will enter and exit the site daily.
3. Service and visitor vehicles will enter and exit the site daily.
4. Private vehicles and spectators attending extra-curricular activities will enter and exit the site periodically.

Proper signage should be included to delineate each area. Signage and bumpers for parking spaces shall be provided by the contractor.

Specific consideration shall be given to the following:

1. Approximately, (140) parking spaces shall be conveniently located for staff, visitors and service personnel. Ten of these to be convenient to the kitchen. Parking locations shall be located on-site and/or off-site.
2. Visitor parking shall be provided near the administrative suite and will naturally lead to the administrative suite reception entry.
3. A fenced, parking area with lockable gate for bicycles shall be provided.
4. Student pedestrian traffic to play fields shall not cross any vehicular traffic area.
5. Refer to **District Design Criteria (DDC)**.

**ELEMENTARY PROGRAM DESCRIPTION**

A comprehensive elementary school program of general education is designed to achieve two major objectives: (1) the development of skills and competencies common to all citizens and (2) the development of competencies unique to the children's individual potentialities.

Major program emphasis is on helping children gain command, to the best of their abilities, of the following processes and skills to enable them to make maximum use of their educational opportunity and to function effectively.

The process of communicating through oral and written language, reading and listening, use of numbers, and the media of fine arts.

1. The processes involved in rational thinking and learning, building concepts, seeing relationships, generalizing, making applications and solving problems.
2. The process of approaching problems and situations with an open mind as well as the ability to examine alternatives and explore creative solutions.
3. An understanding of the family, social responsibilities and the social structure of the communities in which students live.
4. The processes involved in developing an awareness of the many cultures in the immediate community as well as an understanding of, and an appreciation for, the many cultures within the nation and world.

Instructional decisions regarding specific goals, materials and experiences must be made in keeping with the individual differences inherent in each child. Time and resources must be utilized so that these individual differences become assets for individual growth. The daily instructional schedule is arranged to permit flexibility within the school day. In order to meet the general purpose of education, the elementary curriculum and weekly plan might include the following:

Language Arts	35% - 45%
reading skills development, using listening, speaking, writing and reading skills	
Mathematics	15% - 25%
number concepts and skills, using numbers in everyday activities, problem solving	
Social Studies	10% - 20%
citizenship, government, sociology, economics, map and globe skills, field trips, family and community study, geography, history, reading for comprehension	
Science, Health, Safety	10% - 20%
observation, experiments, discussion, and hands on activities to develop science concepts, human sexuality, drug prevention education, and nutrition	

Aesthetic and Creative Experiences 5% - 10%  
writing letters, stories and poems, dramatizing, music, art

Physical Education 5% - 10%  
motor skills and fitness development, body and spatial awareness, game-like experience.

Finally, the total elementary school, through its planned curriculum, provides all children with a foundation to enable them to function as competent, productive individuals as they mature and build upon their school experiences toward becoming fully functioning adults.

**ADMINISTRATIVE/STUDENT SERVICES/GUIDANCE**

**I. PROGRAM PHILOSOPHY**

Refer to overall. (Page 1)

**II. PROGRAM GOALS**

**A. Administrative Goals**

1. Provide direction and support for efficient management of school's resources.
2. Produce an effective instructional program for all students in the school.

**B. Student Service/Guidance Goals**

1. Provide individual and group counseling services to students.
2. Facilitate the identification, screening and placement of students with unique abilities, disabilities and needs.
3. Provide consultation and assistance to the school staff regarding student behavior problems, career awareness, crisis management, group guidance, learning disabilities, preventative mental health, etc.
4. Conduct conferences with parents regarding the needs, problems and development of individual students.
5. Establish effective liaison between the school and community, health agencies and social service agencies.

**III. PROGRAM ACTIVITIES**

**A. Administrative Activities**

1. Conferences
2. Development of schedules
3. Handling budgets and finances
4. Clerical and duplicating services
5. Public relations activities
6. Materials storage
7. Health services
8. Data processing

**B. Student Service/Guidance Activities**

1. **Interviewing:** one-to-one with student, teacher, or parent
2. **Counseling:** one-to-one with student or parent; group of eight or ten students or parents
3. **Testing:** one-to-one in counselor office or with groups
4. **Conferring:** small groups such as student, parent, teacher and principal
5. **Displaying:** information about career guidance, career education, affective education, classroom management, group counseling, etc.
6. **Storing:** educational tests, occupational information, career guidance and career education materials, student records and instructional materials
7. **Meeting:** small groups 5 - 10 persons

**IV. ORGANIZATIONAL NOMENCLATURE**

**A. Staff**

1. Administrators: Principal and Assistant Principal
2. Secretarial/Clerical personnel
3. Curriculum Assistant
4. Guidance Counselor

**V. INNOVATIONS, EXPERIMENTAL IDEAS, OTHER PLANNED USES**

This administrative suite shall be accessible to major instructional areas as well as to the building entrance and visitor parking area.

**VI. JUSTIFICATION FOR VARIANCE FROM SREF REQUIREMENTS**

- A. 200 NSF from Administrative Conference to Student Service Conference.
- B. School Police Officer/video surveillance monitoring equipment room shall be located in Administration; it shall be handicapped accessible, lockable and with no windows. It shall be keyed separately and located so that radio communications do not interfere with computer/data processing.
- C. 50 NSF from Conference Room to increase the Principal's office to 300 NSF.

**VII. PROGRAM FACILITIES LIST**

Design Codes	Spaces	Description	SREF Sq. Ft. Total	Proposed		Proposed	
				Sq. Ft. Per Unit	Sq. Ft. Total	Stu. Sta. Unit	Stu. Stat. Total.
<b>ADMINISTRATIVE</b>							
300	1	Principal (50 NSF from conference room)	250		300		
301	4	Administrative Office		175	700		
302	1	Bookkeeper			125		
303	1	Principal's Secretary			158		
304	1	General Reception/Secretary			750		
305	1	Production/Workroom			384		
312	1	Computer Area/Data Processor			144		
306	1	Conference (50 NSF to principal and 200 NSF to Guidance Conference)			350		
307	1	Clinic (Board approved prototype)			525		
308	1	Administrative Storage			480		
309	1	Records Vault/Student Records			288		
368	1	Textbook Storage			336		
314	1	Itinerant/Attendance Clerk			125		
301	1	School Police/Video Surveillance			175		
819/820		Restrooms, staff (out of allotment)					
822/823		Restrooms, public (out of allotment)					
		<b>Subtotal</b>			<b>4,840</b>		
<b>STUDENT SERVICES/GUIDANCE</b>							
301	1	Counselor			175		
314	1	Itinerant			125		
306	1	Conference (from administrative conference)			200		
		<b>Subtotal</b>			<b>500</b>		
		<b>TOTAL</b>			<b>5,340</b>		

Administrative/Student Services

**VIII. PROGRAM FURNITURE AND EQUIPMENT**

**A. Principal's Office**

No. of Items	Contractor Provided	District Provided (FF&E)	Description
1		X	Desk/workstation with chair
4		X	Side arm chair
1		X	File Cabinet, four drawer, legal, lateral & lockable
1		X	Computer & Printer
1		X	Bookcase
1		X	Table, round, 42"-48"
1	X		Tack board, 3' x 4'
1	X		Clock

**B. Administrative Office; School Police & Principal Secretary**

No. of Items	Contractor Provided	District Provided (FF&E)	Description
1		X	Desk/workstation with chair
2		X	Side arm chair
1		X	File Cabinet, four drawer, legal, lateral & lockable
1		X	Computer & Printer
1		X	Bookcase
1	X		Tack board, 3' x 4'
1	X		Clock

**C. Guidance Counselor; Itinerant; Bookkeeper; Attendance Clerk & Data Processor**

No. of Items	Contractor Provided	District Provided (FF&E)	Description
1		X	Desk/workstation with chair
2		X	Side arm chair
1		X	File Cabinet, four drawer, legal, lateral & lockable
1		X	Computer & Printer
1		X	Bookcase
1		X	Small table for group activities
1	X		Tack board, 3' x 4'
1	X		Clock
	X		Built-ins (refer to special considerations)

Administrative/Student Services



**D. Reception/Secretary Area**

No. of Items	Contractor Provided	District Provided (FF&E)	Description
5		X	Chairs for visitors
1		X	End table
2		X	Computer & Printer
1		X	Bookcase
1	X		Recessed Display Case, 6'W x 4'H
1	X		Tack Board, 3' x 4'
1	X		Clock
2		X	Brochure/Magazine racks, wall mounted
	X		Built-ins (refer to special considerations)

**E. Conference Room (per)**

No. of Items	Contractor Provided	District Provided (FF&E)	Description
1		X	Conference table
8		X	Conference chairs
1	X		Marker Board, 8' x 4' with tack strip
1	X		8'w x 6'h video format screen with black masking borders
1	X		Clock
1	X	X	LCD Projector in Principal's conference room
	X		Built-ins (refer to special considerations)

**F. Production / Workroom**

No. of Items	Contractor Provided	District Provided (FF&E)	Description
1		X	Collator
2		X	Copier
1		X	Paper cutter
3		X	Work table
6		X	Chairs
1	X		Double sink with goose neck faucet (HW/CW)
2		X	Vending machines
1	X		Refrigerator, residential, 18-20 cubic ft
1		X	Microwave
1		X	Computer
1		X	Printer
1	X		Tack board, 4' x 6' (located near staff mailboxes)
1	X		Staff mailboxes (100 minimum) set on a 30"H x 24"D counter with larger cubby/mailboxes underneath to receive large packages. Mailboxes shall be 12"w x 14"d x 4" h clear inside
1	X		Drop Safe (refer to built-in for details)
1	X		Clock
	X		Built-ins (refer to special considerations)

Administrative/Student Services

**G. Clinic (Board approved prototype)**

No. of Items	Contractor Provided	District Provided (FF&E)	Description
4		X	Cots
3	X		Cubicle curtains on track for cots
4-6		X	Straight chairs
1		X	Desk/workstation
2		X	Task Chair
1		X	Medical Scale
1		X	File cabinet, four-drawer, legal, lateral, lockable
2		X	Rolling supply cart/ Table cart
1		X	Hazardous Waste Disposal & Trash Receptacles
1		X	Sharp's container
1		X	Utility Table
1		X	Lockable Storage Cabinet
1	X		Refrigerator with icemaker, residential, lockable, 21 cu. ft.
1	X		Double lockable metal narcotics cabinet
1	X		Supervision Mirror
1	X		Fold down changing table
1	X		Sink with eye wash at nurse station (HW/CW)
1	X		F.A.C.B.C. Shower with no curb and with fold down seat in shower
2		X	Computer
2		X	Printer
1	X		Clock
1	X		Tack board, 2'x4'
	X		Built-ins (refer to special considerations)

**H. Records (minimum one-hour fire rating)**

No. of Items	Contractor Provided	District Provided (FF&E)	Description
4		X	File cabinet, four-drawer, legal, lateral, lockable or moveable records filing system
1		X	Metal storage cabinets, with adjustable shelving
1	X		Key cabinet, lockable, mounted
1	X		Clock
1		X	Computer
1		X	Printer
1		X	Workstation
1		X	Work Table
1		X	Fax Machine
1		X	Copier
	X		Built-ins (refer to special considerations)

**I. Administrative Storage**

No. of Items	Contractor Provided	District Provided (FF&E)	Description
4		X	File cabinet, four-drawer, legal, lateral, lockable
1		X	Stamp machine
		X	Two-way radios
1		X	Radio charger
2	X		Storage cabinet with shelves
	X		Built-ins (refer to special considerations)

**I. Textbook Storage**

No. of Items	Contractor Provided	District Provided (FF&E)	Description
1		X	Barcode reader and scanner for textbooks
1		X	Computer & printer
1	X		Built-ins (refer to special consideration)

**IX. SPECIAL CONSIDERATIONS - CONTRACTOR PROVIDED**

Refer to **GENERAL CONSIDERATIONS, GENERAL SECURITY CONSIDERATIONS AND TRAFFIC CONTROL.**

- A. Heating/Cooling/Ventilation** - As required to meet District Standards.
- B. Acoustical** - As required to meet District Standards.
- C. Floor** - As required to meet District Standards. Carpeting is limited to principal's office. Provide continuous sheet vinyl for the floor and baseboard in the clinic.
- D. Walls** - As required to meet District Standards.
- E. Ceiling** - As required to meet District Standards.
- F. Lighting** - As required to meet District Standards.
- G. Windows** - As required to meet District Standards. No windows in the video surveillance room. Provide observation windows between the nurse's station and cot area and between the counsel room and cot area in the clinic. The nurse should be able to see through the window either sitting or standing position.
- H. Doors** - As required to meet District Standards. Provide larger door in the administrative storage area and entrance to the administrative building. Second exit from principal's office shall be provided. Records room shall be fireproof.
- I. Plumbing Fixtures / Water** - As required to meet District Standards.

Administrative/Student Services

- J. Communications** - As required to meet District Standards.
- K. Electrical** - As required to meet District Standards.
- L. Instructional Technology** – As required to meet District Standards.
- M. Gas and Air** - As required to meet District Standards.
- N. Safety** - As required to meet District Standards.
- O. Fencing** - As required to meet District Standards.
- P. Service Drives** - As required to meet District Standards.
- Q. Parking** - As required to meet District Standards. Parking for administrators, secretarial staff and visitors near administrative offices with easy access at all times during the day.
- R. Built-ins** -
1. **Conference Room** - Provide 8' of base cabinet with lockable doors and adjustable shelving, 34"H, along short wall of room, with upper cabinets with lockable doors and adjustable shelving, 12" clear inside depth.
  2. **Administrative Storage** – Provide adjustable shelving, continuous, 18"D on all walls, full height.
  3. **Clinic** – Refer to Board Approved Prototype clinic for built-ins.
  4. **Textbook Storage** – Provide maximum metal shelving with adjustable shelves on all walls. Provide free standing shelving for center area for adequate passageway.
  5. **Reception/Secretary** - Provide reception counter with transaction top and a section to comply with F.A.C.B.C. standards. Provide working counter, 29"-30" h, along reception counter with a minimum of two lockable pedestals and center drawer. The space between working counter and transaction counter shall be 12" clear height to hold notebooks. The reception counter shall be for a minimum of two people. The reception counter shall have grommets for wire management.
  6. **Production/Workroom** – Provide counter space, with cabinets with lockable doors, adjustable shelving above and below counter. Counter, 34"H base cabinet, 24"D; upper cabinet, 18"D, located on longest wall in workroom, F.A.C.B.C. compliant.

Provide Drop Safe - for the safety of bookkeepers and money handlers, drop safe shall be installed in non-conspicuous location (production/workroom), non-visible to the general public and students but easy access to principal and bookkeeper. Model shall be approximately 27-5/16"H x 24-7/16"W x 25-1/2"D. Safe shall be provided with a hopper to drop money pouches. Hopper shall be approximately 6-1/4"H x 7-3/4"W x 13-1/2"D. The safe shall be bolted to the floor.

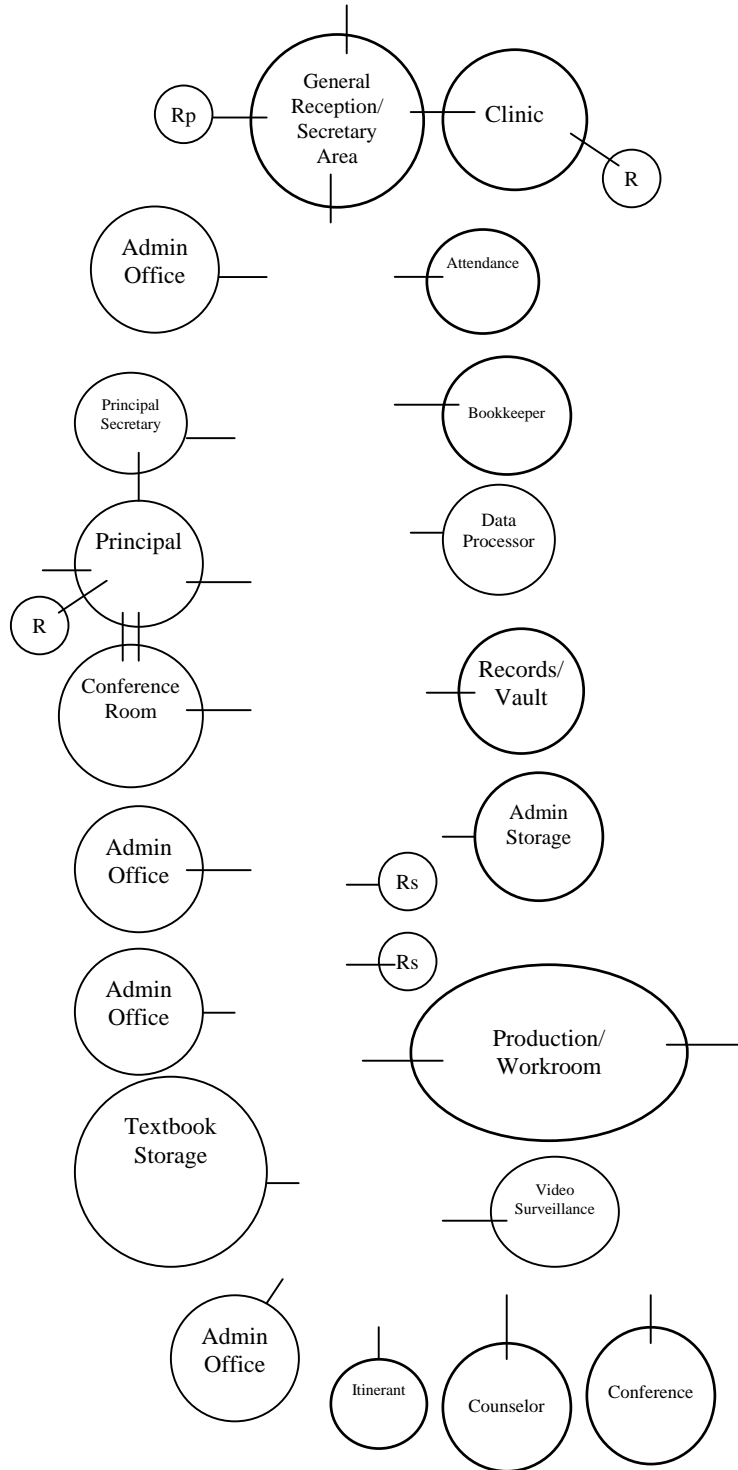
7. **Data Processor/Computer Area** - Open counter workspace, 30"H x 28"D, on one wall with desk in corner. Open shelving with fixed ends above counter and on opposite wall.

**S. Other Considerations-**

1. School Police/Video Surveillance shall be located so that radio communications do not interfere with computer/data processing.
2. Vault/record room shall be a one-hour rated enclosure.
3. Provide electric, phone and data in the vault/records, textbook storage and administrative storage.

**SPATIAL RELATIONSHIPS**

**Administrative/Student Services**



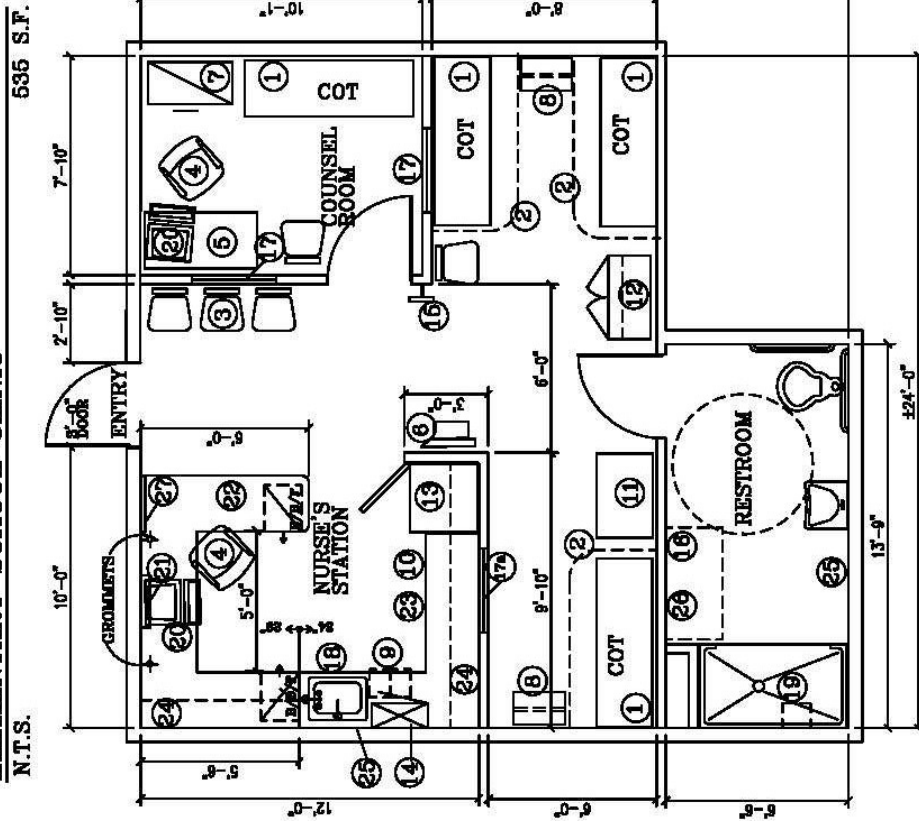
Rp = Restroom, Public  
Rs = Restroom, Staff

Administrative/Student Services

LAST REVISED - 4/23/04

**ELEMENTARY SCHOOL CLINIC**

N.T.S.



**EQUIPMENT LEGEND**

- ① 4 COTS (ONE INSIDE COUNSEL AREA)
- ② CURTAIN CURTAIN ON TRACK FOR CURTAIN TO START @ 18" A.F.F. (BECOMES COUNSEL AREA)
- ③ STUDENT CHAIRS
- ④ NURSE'S TASK CHAIR
- ⑤ 30"X60" DESK (IN COUNSEL AREA)
- ⑥ BALANCE BEAM MEDICAL SCALE
- ⑦ 2-HIGH LATERAL FILE / LOCKABLE
- ⑧ ROLLING SUPPLY / TABLE CART (w/OUTLETS DIRECTLY BEHIND ON BACK WALL - MOUNTED @ 36" A.F.F.)
- ⑨ HAZARDOUS WASTE DISPOSAL & TRASH RECEPTACLES
- ⑩ SHARP'S CONTAINER (MOUNTED INSIDE INTERIOR DOOR OF CAB)
- ⑪ 24"X 36" UTILITY TABLE (w/OUTLETS DIRECTLY BEHIND ON BACK WALL - MOUNTED @ 36" A.F.F.)
- ⑫ LOCKABLE STORAGE CABINET (w/OUTLETS DIRECTLY BEHIND ON BACK WALL - MOUNTED @ 36" A.F.F.)
- ⑬ FULL HT. LOCKABLE BEHIND. & LOCKABLE FREEZER w/ICEMAKER 21 CU. FT. (VERIFY DIM. OF EQUIP. w/MULTIWORK CONST.)
- ⑭ DEL. LOCKABLE METAL NARCOTICS CABINET DIM'S OF 24"W. X 10"D. X 30"H.
- ⑮ SUPERVISION MIRROR, MOUNTED @ 7' A.F.F.
- ⑯ FOLD DOWN CHANGING TABLE
- ⑰ FIXED OBSERVATION WINDOW ± 36"W. X 48"H. CENTERED ON WALL - w/VERT. BLINDS
- ⑱ FIXED OBSERVATION WINDOW BETWEEN UPPER & LOWER CABINETS/RECTILINEAR ±20" HX 35-35" IN LENGTH CENTERED ON WALL
- ⑲ COUNTERTOP @ 34" A.F.F. w/22"X 22" SINK (IC/HT) GOOSENECK FAUCET w/ATTACHED SIDE SPRING STEWAGE SLANT PANEL, BELOW COUNTER TO CONCEAL PLUMBING
- ⑳ ADA FREE-FAR SHOWER w/NO CURBS - FOLD DOWN SEAT IN SHOWER
- ㉑ COMPUTERS & PHONES (OUTLETS @ 18" A.F.F.)
- ㉒ CLOCK & P.A. SYSTEM - ABOVE COMPUTER @ NURSE'S STATION
- ㉓ COUNTERTOP @ 36" A.F.F. TO INCLUDE: GROMMETS, (8) BOX/BOX/FILE PEDESTALS
- ㉔ BASE CABINET STORAGE w/DOORS - 34" A.F.F. w/ADM. SHELVES -
- ㉕ UPPER CABINET w/DOORS & ADM. SHELVES
- ㉖ LOCATION OF SOAP /PAPER TOWEL DISPENSER ADJACENT TO SINK
- ㉗ LOCATION FOR WHEELCHAIR STORAGE
- ㉘ 4' TACKBOARD @ NURSE'S STATION

**GENERAL NOTES**

- ALL CABINETS TO BE LOCKABLE
- HOMOGENEOUS SHEET VINYL FLOORING IN CLINIC/COUNSEL RM.
- CEAMIC TILE FLOORING IN RESTROOMS
- FLOOR TO CEILING WALL TILE IN RESTROOM
- ALL RESTROOM FIXTURES & EQUIPMENT TO MEET A.D.A. REQUIREMENTS PER FL. BLDG. CODE 2001
- PLEASE SEE FF&E MATRIX FOR CONTRACTOR PROVIDED ITEMS

ART

**I. PROGRAM PHILOSOPHY**

Refer to overall. (Page 1)

**II. PROGRAM GOALS**

The five major goals of art education in the elementary grades are as follows:

- A. To perceive and respond to various aspects of art.
- B. To value art as an important realm of human experience.
- C. To produce works of art.
- D. To know about art.
- F. To make and justify statements about the quality and merit of works of art.

**III. PROGRAM ACTIVITIES**

Art activities in the elementary school include the following:

- A. **Drawing** - (crayon, chalk, pencil, charcoal, ink, paper, matboard)
- B. **Painting** - (water soluble, polymer)
- C. **Constructing / Forming** - (wood, paper, wire, clay, fabrics, fibers, threads, found material)
- D. **Viewing** - (slides, overhead transparencies, opaque and movie projection, video tape equipment)
- E. **Displaying** - (for both two- and three-dimensional art works)
- F. **Printing** - (silk screen, stencil, linoleum, collograph, monoprint)
- G. **Storing** - (individual student storage for both two- and three-dimensional material; bulk storage; space within classroom area for materials/supplies; still-life objects and things in daily use).

**IV. ORGANIZATIONAL NOMENCLATURE**

Teacher - Student Ratio: varies

Grade Levels for Which Program is Intended: K-5

Art



**V. INNOVATIONS, EXPERIMENTAL IDEAS, OTHER PLANNED USES**

N/A

**VI. JUSTIFICATION FOR VARIANCE FROM SREF REQUIREMENTS**

- A. Art patio is needed adjacent to Art Laboratory.
- B. Kiln square footage has been increased to accommodate program needs.
- C. Restroom has been added for flexibility purposes and enhancement of supervision of students.

**VII. PROGRAM FACILITIES LIST**

Design Codes	Spaces	Description	SREF Sq. Ft. Total	Proposed		Proposed	
				Sq. Ft. Per Unit	Sq. Ft. Total	Stu. Sta. Unit	Stu. Stat. Total.
<b>ART</b>							
050	1	Laboratory			1,000		
805	1	Kiln			80		
808	1	Material Storage			100		
812	1	Project Storage			150		
814	1	Student Restroom - M/F			45		
<b>TOTAL</b>					<b>1,375</b>		

**VIII. PROGRAM FURNITURE AND EQUIPMENT**

**A. Laboratory**

No. of Items	Contractor Provided	District Provided (FF&E)	Description
28		X	Wooden stool, 17"-18"
7		X	Art table, 60" l x 42"w x 29"-30" h
6		X	Easel, double-sided, with removable paint trays
3		X	Hot plate, single unit, with temperature controls
1		X	Mat cutter, 30" x 40"
2		X	Drying rack, portable
1		X	File cabinet, four-drawer, legal, lateral, lockable
1		X	Teacher computer and printer
4		X	Spotlight, portable
4		X	Computer
2		X	Printer
2	X		Stainless steel, double bowl, sink with separate goose neck faucets (CW) and separate clay traps.
1	X		Marker board, 4' x 16' with map rail and flag holder
1	X		8'w x 6'h video format screen with black masking

Art

**DRAFT SCHEDULED FOR 04/19/06 BOARD MEETING**

<b>No. of Items</b>	<b>Contractor Provided</b>	<b>District Provided (FF&amp;E)</b>	<b>Description</b>
			borders
2		X	Pencil sharpener, electric
1	X		Clock
1	X		Multimedia cabinet (refer to General Consideration)
1	X		Workstation (refer to General Consideration)
1		X	DVD/VCR Combo
1		X	Document Camera
1		X	Wireless Laptop cart
1	X	X	LCD Projector
1	X	X	Sound Field Enhancement System
	X		Built-ins (refer to special considerations)

**B. Kiln Room**

<b>No. of Items</b>	<b>Contractor Provided</b>	<b>District Provided (FF&amp;E)</b>	<b>Description</b>
1		X	Cart, two shelves
1	X		Utility tub (HW/CW) with clay trap
1	X		Kiln, electric, temperature control, top loader with approximately 9 cu. ft. of inside space with kiln furniture
	X		Built-ins (refer to special considerations)

**C. Storage**

<b>No. of Items</b>	<b>Contractor Provided</b>	<b>District Provided (FF&amp;E)</b>	<b>Description</b>
2		X	Cart, two trays
1	X		Cabinet, double door, lockable
2		X	Clay storage container, on casters, tight-fitting top, metal lined
1		X	Cart for storing two-dimensional reproductions, minimum interior, 24" x 30"
8		X	Paper roller
1		X	Computer & Printer for Teacher
	X		Built-ins (refer to special considerations)

**IX. SPECIAL CONSIDERATIONS - CONTRACTOR PROVIDED**

Refer to **GENERAL CONSIDERATIONS, GENERAL SECURITY CONSIDERATIONS AND TRAFFIC CONTROL.**

- A. Heating/Cooling/Ventilation** – As required to meet District Standards.
- B. Acoustical** - As required to meet District Standards.
- C. Floor** - As required to meet District Standards. The floor shall be colored sealer on concrete in the kiln room. Classroom and kiln room shall have floor drains with lift-

Art

**DRAFT SCHEDULED FOR 04/19/06 BOARD MEETING**

out sediment traps for easy cleaning. Threshold shall be 1/2" h to keep water from flowing out of room when rinsing floor. The floor covering shall be durable, smooth, resilient and easy to clean.

- D. Walls** - As required to meet District Standards. Provide tackable vinyl covered wall panels where space allows, including cabinet fronts.
- E. Ceiling** - As required to meet District Standards. Laboratory shall have a system of a least six hooks in the student work area to support, approximately 150 lb. each, used to hand weaving frames, drying lines, mobiles, etc.
- F. Lighting** - As required to meet District Standards. In addition to regular lighting, provide track lights for display on bulletin board wall and display areas. Provide ceiling attachments and outlets for portable spotlights for still-life arrangements and figure poses. No plastic covers on lights in the kiln room.
- G. Windows** - As required to meet District Standards. Provide observation window between material storage and laboratory.
- H. Doors** - As required to meet District Standards.
- I. Plumbing Fixtures / Water** - As required to meet District Standards. Sinks should be located in a peninsular arrangement when possible.
- J. Communications** - As required to meet District Standards.
- K. Electrical** - As required to meet District Standards.
- L. Instructional Technology** – As required to meet District Standards.
- M. Gas and Air** - As required to meet District Standards.
- N. Safety** -
  - 1. Kiln room precautions for excessive heat/noxious fumes.
  - 2. Adequate ventilation for chemicals and acids.
  - 3. As required to meet District Standards.
- O. Fencing** - As required to meet District Standards.
- P. Service Drives** - As required to meet District Standards.
- Q. Parking** - As required to meet District Standards.

Art

**R. Built-ins -**

1. **Laboratory** - Provide counter, 30"H x 30"D, along three walls, with cabinets (mix of upper cabinets with doors and without doors), adjustable shelves, lockable door (one key). Inside shelving shall accommodate 18" x 24" paper. One cabinet or storage shelf for mat board storage, 32"H x 40"D. One counter area for paper cutter, 30"H x 40"D. Provide computer counter to accommodate four (4) computers and two (2) printers (14' W x 30"D). The counter shall have grommets for wire management. Provide Multimedia cabinet and workstation - refer to General Considerations.
2. **Kiln Room** – Provide maximum steel shelving, floor to ceiling, on all walls with proper backing for mounting.
3. **Storage** - One wall, with closed base cabinets; cabinets above, with adjustable shelves. One wall, with open, fixed shelving, floor-to-ceiling, 18"D and 20" apart. One wall, with working-height counter and open, fixed shelving above, 12"D and 18" apart. Project storage shall include five shelves for 24" x 30" matted student work. Closed cabinets shall be lockable.
4. **School Display/Exhibition** - Provide recessed display cabinet (6' W x 4' H) for students' art work in hallways, cafeteria and reception areas of the school. A gallery space shall be included adjacent to media center and administrative office area.

Provide space in classroom, between cabinet tops and ceiling approximately 24", for still-life objects and large projects.

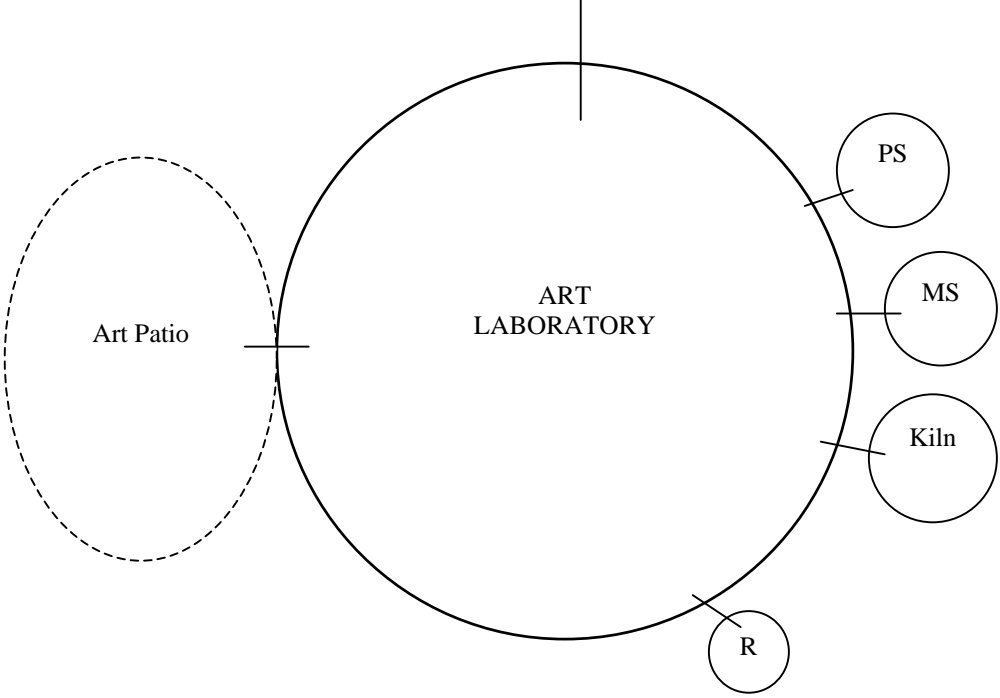
**S. Other Considerations -**

1. The kiln room shall be a one hour rated enclosure.
2. Provide benches for Art patio.
3. Art patio, provided by contractor, shall have a north or east exposure.

Art

SPATIAL RELATIONSHIPS

Art



MS – Material Storage  
PS – Project Storage  
R – Restroom, student

Art

**KINDERGARTEN**

**I. PROGRAM PHILOSOPHY**

Refer to overall. (page 1)

**II. PROGRAM GOALS**

The goal of the Kindergarten program is to provide a succession of experiences designed specifically for the intellectual, emotional, social and physical development of the kindergarten aged child. Program emphasis is placed on basic learning skills and social development.

**III. PROGRAM ACTIVITIES**

Each Kindergarten classroom shall provide space for activities and centers of interest which are an integral part of the kindergarten programs as follows:

- A. Areas for total group classroom activities.
- B. A quiet library corner with a variety of books on display and easily available, with a nearby table or seating area where children may sit to look at them.
- C. A building area with blocks of various sizes and shapes, plus accessories available on low, open shelves with ample space for small group and individual block building away from major traffic areas.
- D. A housekeeping area with child-sized, appropriate furniture and accessories, where four to eight children may dramatize adult activities.
- E. An easily maintained painting area with good light where easels, poster paints and large brushes permit children to experiment with color, line and design.
- F. A rhythm area where children may listen to music, use simple instruments, and where there is a space to interpret rhythms.
- G. A science area where children can manipulate and experiment with simple materials and care for pets; plant seeds; water plants; and observe objects, plant and animal life.
- H. Tables where children may participate in art activities or use manipulative games and toys.
- I. A woodworking area providing low work benches and space for storing tools.
- J. An area for showing multi-media.

Kindergarten

K. An area for food preparation and cooking.

**IV. ORGANIZATIONAL NOMENCLATURE**

Teacher - Student Ratio: 1:18

Grade Levels for Which Program is Intended: Kindergarten

**V. INNOVATIONS, EXPERIMENTAL IDEAS, OTHER PLANNED USES**

N/A

**VI. JUSTIFICATION FOR VARIANCE FROM SREF REQUIREMENTS**

A. 100 NSF shall be used for shared kitchen between two classrooms.

B. Kindergarten and ESE outside storage have been combined into one space.

**VII. PROGRAM FACILITIES LIST**

Design Codes	Spaces	Description	SREF Sq. Ft. Total	Proposed		Proposed	
				Sq. Ft. Per Unit	Sq. Ft. Total	Stu. Sta. Unit	Stu. Stat. Total.
<b>KINDERGARTEN</b>							
001	8	Kindergarten Classroom		900	7,200	18	144
808	8	Material Storage		45	360		
348	4	Shared Kitchen		100	400		
811	8	Outside Storage (combine with ESE)		50	400		
814	8	Student Restrooms - M/F		45	360		
<b>TOTAL</b>					<b>8,720</b>		<b>144</b>

**VIII. PROGRAM FURNITURE AND EQUIPMENT**

**A. Classroom (per classroom)**

No. of Items	Contractor Provided	District Provided (FF&E)	Description
4-6		X	Activity Table
20-30		X	Chair, stackable 14"-15"
1		X	Teacher Computer & Printer
1		X	File cabinet, four-drawer, legal, lateral, lockable
1		X	Bulletin board, movable
1		X	Serving cart, portable
1		X	Learning stations
1		X	Adjustable easel with tray
1		X	Set of child-size housekeeping furniture, various pieces
1		X	Mirror, full-length
1		X	Set of indoor hollow blocks, eight-pieces each set

Kindergarten

**DRAFT SCHEDULED FOR 04/19/06 BOARD MEETING**

<b>No. of Items</b>	<b>Contractor Provided</b>	<b>District Provided (FF&amp;E)</b>	<b>Description</b>
1		X	Set of tools
1		X	Set of blocks
1		X	Movable cabinet, 4'H x 4'W x 18"D, with several drawers
3		X	Movable cabinet, 3'H x 3'W x 18"D, of various compartments and sizes
1		X	Portable counter top, open shelf unit, with two adjustable shelves
1		X	Area rug, 10'W x 12'L
4		X	Computers
2		X	Printers
1	X		Stainless steel sink with goose neck faucet (CW) and water jet drinking fountain accessible to disabled.
1	X		Marker Board, 4' x 16', with map rails and flag holder. Height from floor shall accommodate Kindergarten children.
4	X		Tack Board, 4' x 4'
1	X		8'w x 6'h video format screen with black masking borders
1	X		Pencil sharpener with proper backing
1		X	Book rack, with shelves, easily accessible to children, and back of the shelves covered with bulletin board
1		X	Bookcase
1	X		Clock
1	X		Multimedia cabinet (refer to General Consideration)
1	X		Workstation (refer to General Consideration)
1		X	DVD/VCR Combo
1		X	Document Camera
1		X	Wireless Laptop cart
1	X	X	LCD Projector
1	X	X	Sound Field Enhancement
	X		Built-ins (refer to special considerations)

**B. Outdoor Areas**

<b>No. of Items</b>	<b>Contractor Provided</b>	<b>District Provided (FF&amp;E)</b>	<b>Description</b>
1	X		Playground Equipment with poured in place rubberized surface
		X	Tricycles
		X	Wagons
		X	Trucks
		X	Tractors
		X	Scooters
		X	Convertible water/sand table

Kindergarten



C. **Shared Kitchen (per kitchen)**

No. of Items	Contractor Provided	District Provided (FF&E)	Description
1	X		Microwave oven
1	X		Refrigerator, 22 cu. ft.
1	X		Stainless steel, double bowl, sink with separate goose neck faucets (CW)
	X		Built-ins (refer to special considerations)

IX. **SPECIAL CONSIDERATIONS - CONTRACTOR PROVIDED**

Refer to **GENERAL CONSIDERATIONS, GENERAL SECURITY CONSIDERATIONS AND TRAFFIC CONTROL.**

- A. **Heating/Cooling/Ventilation** - As required to meet District Standards.
- B. **Acoustical** - As required to meet District Standards.
- C. **Floor** - As required to meet District Standards.
- D. **Walls** - As required to meet District Standards.
- E. **Ceiling** - As required to meet District Standards.
- F. **Lighting** - As required to meet District Standards.
- G. **Windows** - As required to meet District Standards.
- H. **Doors** - As required to meet District Standards.
- I. **Plumbing Fixtures/Water** - As required to meet District Standards.
- J. **Communications** - As required to meet District Standards.
- K. **Electrical** - As required to meet District Standards.
- L. **Instructional Technology** - As required to meet District Standards.
- M. **Gas and Air** - As required to meet District Standards.
- N. **Safety** - As required to meet District Standards. Do not locate kindergarten play area in remote isolated areas.
- O. **Fencing** - As required to meet District Standards.
- P. **Service Drives** - As required to meet District Standards.

Kindergarten

**Q. Parking** - As required to meet District Standards.

**R. Built-ins** -

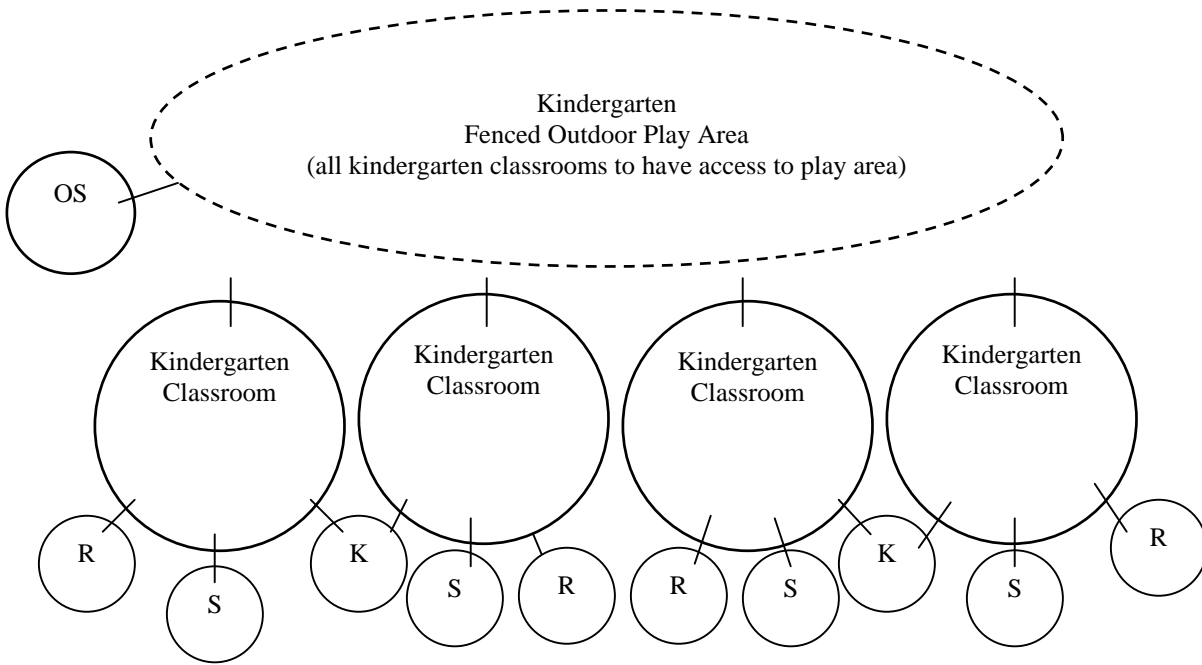
1. Provide cubbyhole (22), 15"H x 15"W x 15"D (clear inside) and no higher than 40" from floor.
2. Provide base cabinet with sink and lockable doors and adjustable shelves and upper cabinets with lockable doors and adjustable shelves.
3. Provide base cabinet with doors and adjustable shelves and upper cabinets with doors and adjustable shelves in shared kitchen.
4. Provide computer counter to accommodate four (4) computers and two (2) printers (14'W x 30"D). The counter shall have grommets for wire management.
5. Provide metal adjustable shelving in outdoor storage.
6. Provide Multimedia cabinet and workstation - refer to General Considerations.
7. Provide metal shelving (3 – 36" w x 18" d x 80" h) in storage.

**S. Other Considerations**

1. Provide an overhang area adjacent to the kindergarten play area for covered outdoor activities.

## SPATIAL RELATIONSHIPS

### Kindergarten



OS = Outside Storage, Kindergarten and ESE

R = Restroom

S = Storage

K = Kitchen

Not all spaces are shown

Contractor provided playground equipment shall be located within the fenced play area.

Kindergarten

**PRIMARY**

**I. PROGRAM PHILOSOPHY**

Refer to overall. (Page 1)

**II. PROGRAM GOALS**

The goals of the primary level program for students of mostly ages 6 - 8 are to:

- A. Develop oral / written communication skills, mathematical skills, science process skills, and motor / fitness skills.
- B. Develop social skills and competencies unique to each individual student.
- C. Provide enrichment and growth experiences in the fine arts.

**III. PROGRAM ACTIVITIES**

Accommodate individual, small and large group activities in all areas of the curriculum.

**IV. ORGANIZATIONAL NOMENCLATURE**

Teacher - Student Ratio: 1:18

Grade Levels for Which Program is Intended: 1-3

**V. INNOVATIONS, EXPERIMENTAL IDEAS, OTHER PLANNED USES**

N/A

**VI. JUSTIFICATION FOR VARIANCE FROM SREF REQUIREMENTS**

N/A

**VII. PROGRAM FACILITIES LIST**

Design Codes	Spaces	Description	SREF Sq. Ft. Total	Proposed		Proposed	
				Sq. Ft. Per Unit	Sq. Ft. Total	Stu. Sta. Unit	Stu. Stat. Total.
<b>PRIMARY</b>							
001	16	Primary Classroom		900	14,400	18	288
808	16	Material Storage		45	720		
814	16	Student Restroom - M/F		45	720		
		<b>TOTAL</b>			<b>15,840</b>		<b>288</b>

Primary

**VIII. PROGRAM FURNITURE AND EQUIPMENT**

**A. Classroom (per classroom)**

No. of Items	Contractor Provided	District Provided (FF&E)	Description
18		X	Student desk
2		X	Table, activity
1		X	File cabinet, four-drawer, legal, lateral, lockable
1		X	Teacher Computer & Printer
2		X	Learning stations
20-30		X	Chair, 15"-16", stackable
1		X	Map, globe
4		X	Computers
2		X	Printers
1	X		Stainless steel sink with goose neck faucet (CW) and water jet drinking fountain accessible to disabled.
1	X		Marker Board, 4' x 16', with map rails and flag holder.
4	X		Tack Board, 4' x 4'
1	X		8'w x 6'h video format screen with black masking borders
1		X	Pencil sharpener, electric
1		X	Book rack, with shelves, easily accessible to children, and back of the shelves covered with bulletin board
varies		X	Moveable cabinets/activity centers of various sizes for books and materials
1		X	Bookcase
1	X		Clock
1	X		Multimedia cabinet (refer to General Considerations)
1	X		Workstation (refer to General Considerations)
1		X	DVD/VCR Combo
1		X	Document camera
1		X	Wireless laptop cart
1	X	X	LCD Projector
1	X	X	Sound Field Enhancement System
	X		Built-ins (refer to special considerations)

**IX. SPECIAL CONSIDERATIONS - CONTRACTOR PROVIDED**

Refer to **GENERAL CONSIDERATIONS, GENERAL SECURITY CONSIDERATIONS AND TRAFFIC CONTROL.**

- A. Heating/Cooling/Ventilation** - As required to meet District Standards.
- B. Acoustical** - As required to meet District Standards.
- C. Floor** - As required to meet District Standards.
- D. Walls** - As required to meet District Standards.
- E. Ceiling** - As required to meet District Standards.

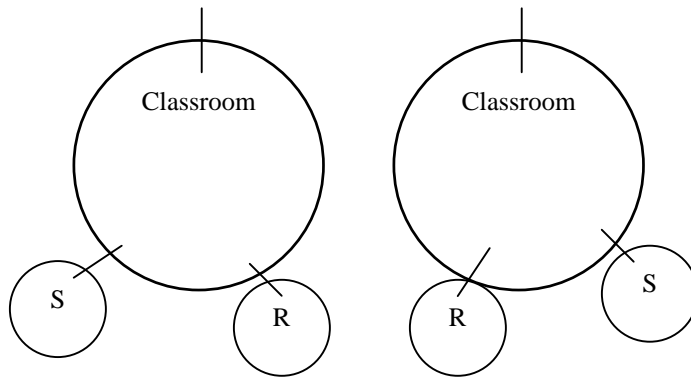
Primary

- F. **Lighting** - As required to meet District Standards.
- G. **Windows** - As required to meet District Standards.
- H. **Doors** - As required to meet District Standards.
- I. **Plumbing Fixtures/Water** - As required to meet District Standards.
- J. **Communications** - As required to meet District Standards.
- K. **Electrical** - As required to meet District Standards.
- L. **Instructional Technology** - As required to meet District Standards.
- M. **Gas and Air** - As required to meet District Standards.
- N. **Safety** - As required to meet District Standards.
- O. **Fencing** - As required to meet District Standards.
- P. **Service Drives** - As required to meet District Standards.
- Q. **Parking** - As required to meet District Standards.
- R. **Built-ins** -
  - 1. Provide cubbyhole (22), 15"H x 15"W x 15"D (clear inside) and no higher than 40" from floor.
  - 2. Provide base cabinet with sink and lockable doors and adjustable shelves and upper cabinets with lockable doors and adjustable shelves.
  - 3. Provide computer counter to accommodate four (4) computers and two (2) printers (14'W x 30"D). The counter shall have grommets for wire management.
  - 4. Provide Multimedia cabinet and workstation - refer to General Considerations.
  - 5. Provide metal shelving (3- 36"w x 18"d x 80"h) in storage.
- S. **Other Considerations** - N/A

Primary

**SPATIAL RELATIONSHIPS**

**Primary**



R = Restroom

S = Storage

Not all classrooms are shown

Primary

**INTERMEDIATE**

**I. PROGRAM PHILOSOPHY**

Refer to overall. (Page 1)

**II. PROGRAM GOALS**

The goals of the Intermediate level program for students of mostly ages 8 - 11 are to:

- A. Continue oral and written language, mathematical skills and science process development.
- B. Provide learning experiences in science, social studies and other subject areas.
- C. Provide enrichment and growth experiences in the fine arts and physical education.

**III. PROGRAM ACTIVITIES**

Accommodate individual, small and large group activities in all areas of the curriculum.

**IV. ORGANIZATIONAL NOMENCLATURE**

Teacher - Student Ratio: 1:22

Grade Levels for Which Program is Intended: 4-5

**V. INNOVATIONS, EXPERIMENTAL IDEAS, OTHER PLANNED USES**

N/A

**VI. JUSTIFICATION FOR VARIANCE FROM SREF REQUIREMENTS**

- A. Shared restrooms have been added to intermediate classrooms for flexibility purposes and enhancement of supervision of students.

**VII. PROGRAM FACILITIES LIST**

Design Codes	Spaces	Description	SREF Sq. Ft. Total	Proposed		Proposed	
				Sq. Ft. Per Unit	Sq. Ft. Total	Stu. Sta. Unit	Stu. Stat. Total.
<b>INTERMEDIATE</b>							
002	16	Intermediate Classroom		900	14,400	22	352
808	16	Material Storage		45	720		
815/816	16	Student Restrooms, shared (out of allotment)					
		<b>TOTAL</b>			<b>15,120</b>		<b>352</b>

Intermediate



**VIII. PROGRAM FURNITURE AND EQUIPMENT**

**A. Classroom (per classroom)**

No. of Items	Contractor Provided	District Provided (FF&E)	Description
22		X	Student desk
2		X	Table, activity
1		X	File cabinet, four-drawer, legal, lateral, lockable
1		X	Teacher Computer & Printer
2		X	Learning stations for 4 students
20-30		X	Chair, 17"-18", stackable
1		X	Map, globe
4		X	Computers
2		X	Printers
1	X		Stainless steel sink with goose neck faucet (CW) and water jet drinking fountain accessible to disabled.
1	X		Marker Board, 4' x 16', with map rails and flag holder.
4	X		Tack Board, 4' x 4'
1	X		8'w x 6'h video format screen with black masking borders
1		X	Pencil sharpener, electric
1		X	Book rack, with shelves, easily accessible to children, and back of the shelves covered with bulletin board
Varies		X	Moveable cabinets/activity centers of various sizes for books and materials
1		X	Bookcase
1	X		Clock
1	X		Multimedia cabinet (refer to General Considerations)
1	X		Workstation (refer to General Considerations)
1		X	Document camera
1		X	DVD/VCR Combo
1		X	Wireless Laptop cart
1	X	X	LCD Projector
1	X	X	Sound Field Enhancement System
	X		Built-ins (refer to special considerations)

**IX. SPECIAL CONSIDERATIONS - CONTRACTOR PROVIDED**

Refer to **GENERAL CONSIDERATIONS, GENERAL SECURITY CONSIDERATIONS AND TRAFFIC CONTROL.**

- A. Heating/Cooling/Ventilation** - As required to meet District Standards.
- B. Acoustical** - As required to meet District Standards.
- C. Floor** - As required to meet District Standards.
- D. Walls** - As required to meet District Standards.
- E. Ceiling** - As required to meet District Standards.

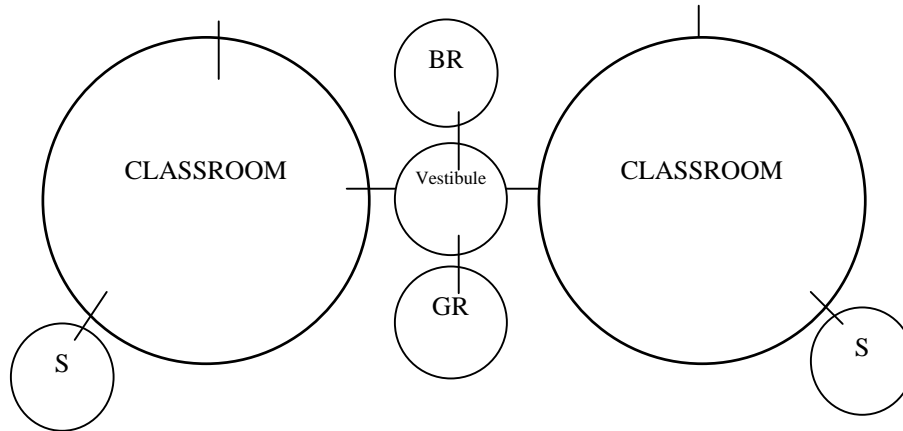
Intermediate

- F. **Lighting** - As required to meet District Standards.
- G. **Windows** - As required to meet District Standards.
- H. **Doors** - As required to meet District Standards.
- I. **Plumbing Fixtures / Water** - As required to meet District Standards.
- J. **Communications** - As required to meet District Standards.
- K. **Electrical** - As required to meet District Standards.
- L. **Instructional Technology** - As required to meet District Standards.
- M. **Gas and Air** - As required to meet District Standards.
- N. **Safety** - As required to meet District Standards.
- O. **Fencing** - As required to meet District Standards.
- P. **Service Drives** - As required to meet District Standards.
- Q. **Parking** - As required to meet District Standards.
- R. **Built-ins** -
  - 1. Provide cubbyhole (24), 15"H x 15"W x 15"D (clear inside) and no higher than 40" from floor.
  - 2. Provide base cabinet with sink and lockable doors and adjustable shelves and upper cabinets with lockable doors and adjustable shelves.
  - 3. Provide computer counter to accommodate four (4) computers and two (2) printers (14'W x 30"D). The counter shall have grommets for wire management.
  - 4. Provide Multimedia cabinet and workstation -refer to General Considerations.
  - 5. Provide metal shelving (3 – 36" w x 18" d x 80" h) in storage.
- S. **Other Considerations** – N/A

Intermediate

## SPATIAL RELATIONSHIPS

### Intermediate



BR = Boy's Restroom

GR = Girl's Restroom

S = Storage

Not all classrooms are shown

Intermediate

**SKILLS DEVELOPMENT LABORATORY**

**I. PROGRAM PHILOSOPHY**

Refer to overall. (Page 1)

**II. PROGRAM GOALS**

Improvement of students' knowledge and skills in specialized subject areas and development of individual skills of research, project development and independent study.

**III. PROGRAM ACTIVITIES**

Instruction will be provided to large and small groups. Planned demonstrations and presentations will be made to pupils. These include personnel and audio-visual activities. Individualized instruction will also be provided. Students will work on individualized and group projects and in specialized learning centers.

**IV. ORGANIZATIONAL NOMENCLATURE**

Staff and student participation vary as determined by scheduled use of the facility.

**V. INNOVATIONS, EXPERIMENTAL IDEAS, OTHER PLANNED USES**

The skills development laboratory provides a setting for learning experiences in which students can explore and develop individual skills in science, foreign language and computer science. This laboratory will accommodate in-depth experiences with specialized equipment and learning centers to enrich and build upon regular classroom activities.

**VI. JUSTIFICATION FOR VARIANCE FROM SREF REQUIREMENTS**

- A. One Skills Development Laboratory shall have assigned student stations per SREF.
- B. One Skills Development Laboratory shall be designed for science and located on the first floor.
- C. Restrooms have been added to Skills Development Laboratory for flexibility purposes and enhancement of supervision of students.

**VII. PROGRAM FACILITIES LIST**

Design Codes	Spaces	Description	SREF Sq. Ft. Total	Proposed		Proposed	
				Sq. Ft. Per Unit	Sq. Ft. Total	Stu. Sta. Unit	Stu. Stat. Total.
<b>SKILLS DEVELOPMENT LABORATORY</b>							
010	2	Skills Laboratory (Future 3 <sup>rd</sup> lab will have student stations)		900	1,800		
808	2	Storage		45	90		
814	2	Student Restroom - M/F		45	90		
<b>TOTAL</b>					<b>1,980</b>		

**VIII. PROGRAM FURNITURE AND EQUIPMENT**

**A. Laboratory (Science)**

No. of Items	Contractor Provided	District Provided (FF&E)	Description
8-10		X	Science worktable, rectangular
1		X	File cabinet, four-drawer, legal, lateral, lockable
1		X	Teacher Computer & Printer
20-30		X	Chair, 17"-18", stackable
30		X	Computers
4		X	Printers
1		X	Teacher demonstration center, portable, 30"D x 54"W x 34"H, electric and data hook ups; underneath storage with lockable doors
1	X		Marker Board, 4' x 16', with map rails and flag holder.
4	X		Tack Board, 4' x 4'
1	X		8'w x 6'h video format screen with black masking borders
1		X	Pencil sharpener, electric
1	X		Sink for intermediate students, stainless steel with goose neck faucet (CW) and water jet drinking fountain accessible to disabled
1	X		Sink for primary students, stainless steel with goose neck faucet (CW) and water jet drinking fountain accessible to disabled
1	X		Double sink, stainless steel with goose neck faucet (CW) accessible to disabled
1	X		Sanitizer cabinet for safety eyewear
1	X		Eyewash station
1	X		Clock
1		X	Bookcase
1	X		Multimedia cabinet (refer to General Considerations)
1	X		Workstation (refer to General Considerations)
1		X	Document camera
1		X	DVD/VCR Combo
1		X	Wireless Laptop cart
1	X	X	LCD Projector
1	X	X	Sound Field Enhancement System

Skills Development Laboratory

**DRAFT SCHEDULED FOR 04/19/06 BOARD MEETING**

<b>No. of Items</b>	<b>Contractor Provided</b>	<b>District Provided (FF&amp;E)</b>	<b>Description</b>
	X		Built-ins (refer to special considerations)

**B. Laboratory (Computer)**

<b>No. of Items</b>	<b>Contractor Provided</b>	<b>District Provided (FF&amp;E)</b>	<b>Description</b>
12-15		X	Computer table, oblong, 30" w x 60" l, with wire management
1		X	File cabinet, four-drawer, legal, lateral, lockable
1		X	Teacher Computer & Printer
20-30		X	Chair, stackable
30		X	Computers
4		X	Printers
1	X		Marker Board, 4' x 16', with map rails and flag holder.
4	X		Tack Board, 4' x 4'
1	X		8'w x 6'h video format screen with black masking borders
1		X	Pencil sharpener, electric
1		X	Bookcase
1	X		Multimedia cabinet (refer to General Considerations)
1	X		Workstation (refer to General Considerations)
1		X	Document camera
1		X	DVD/VCR Combo
1		X	Wireless Laptop cart
1	X	X	LCD Projector
1	X	X	Sound Field Enhancement System
1	X		Clock
	X		Built-ins (refer to special considerations)

**IX. SPECIAL CONSIDERATIONS - CONTRACTOR PROVIDED**

Refer to **GENERAL CONSIDERATIONS, GENERAL SECURITY CONSIDERATIONS AND TRAFFIC CONTROL.**

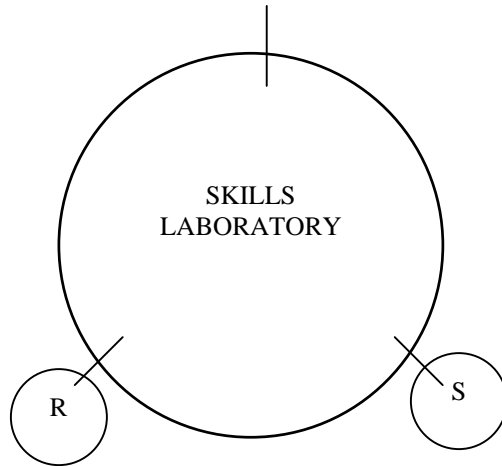
- A. Heating/Cooling/Ventilation** - As required to meet District Standards.
- B. Acoustical** - As required to meet District Standards.
- C. Floor** - As required to meet District Standards.
- D. Walls** - As required to meet District Standards.
- E. Ceiling** - As required to meet District Standards 1.
- F. Lighting** - As required to meet District Standards.
- G. Windows** - As required to meet District Standards.

Skills Development Laboratory

- H. **Doors** - As required to meet District Standards.
- I. **Plumbing Fixtures/Water** - As required to meet District Standards.
- J. **Communications** - As required to meet District Standards.
- K. **Electrical** – As required to meet District Standards.
- L. **Instructional Technology** - As required to meet District Standards. Provide computer/data hook ups for student use to allow perimeter and/or peninsular set-up.
- M. **Gas and Air** - As required to meet District Standards.
- N. **Safety** - As required to meet District Standards.
- O. **Fencing** - As required to meet District Standards.
- P. **Service Drives** - As required to meet District Standards.
- Q. **Parking** - As required to meet District Standards.
- R. **Built-ins** -
  - 1. Provide base cabinet with sink and lockable doors and adjustable shelves and upper cabinets with lockable doors and adjustable shelves in both Science Skills Development Laboratory and Computer Skills Development Laboratory.
  - 2. Provide Multimedia cabinet and workstation - refer to General Considerations.
  - 3. Provide metal shelving (3 – 36”d x 18”w x 80”h) in storage.
- S. **Other Considerations** – N/A

**SPATIAL RELATIONSHIPS**

**Skills Development Laboratory**



S = Storage  
R = Restroom  
Not all spaces are shown

Skills Development Laboratory



**CUSTODIAL**

**I. PROGRAM PHILOSOPHY**

Staff and students can expect a clean and healthful environment in which to teach and learn. A properly organized and trained custodial staff has the ability to insure the sanitation and regular cleaning of any facility, if their cleaning program is supported through the cooperation of the entire staff and student body. Custodians are allocated based on the size of the school (square feet) in sufficient numbers to maintain the cleanliness of the facility. Care must be exercised that cleaning is their primary function. Staff and students help insure the success of a Custodial program through avoiding abuse of the facility. Our investment in school facilities is protected by initial provision and utilization of sufficient, effective equipment and personnel.

**II. PROGRAM GOALS**

To provide a safe, sanitary, and aesthetically acceptable learning and work environment through proper utilization of human resources, material, equipment and methods.

**III. PROGRAM ACTIVITIES**

The principal duties of the Custodial staff are as follows:

- A. Prepare and maintain adherence to work schedules to insure regular, daily cleaning of the entire facility.
- B. Maintain personal use facilities (restrooms, water fountains, shower rooms, sinks) in clean and sanitary condition to minimum standards of State Requirements for Educational Facilities (S.R.E.F.) regulations and in accordance with the "Instructional Handbook for Custodians."
- C. Assure that school grounds are kept free of litter and safety hazards.
- D. Report all hazardous conditions, immediately.
- E. Observe all safety and fire regulations.
- F. Maintain security of buildings during non-school hours.
- G. Report any items in facility in need of repair.
- H. Maintain custodial equipment so that it is clean and usable at all times.
- I. Use only authorized materials, methods, and equipment to accomplish program goals.
- J. Maintain inventory of custodial supplies; and reorder, as necessary, for timely

Custodial

replacement.

K. Use all manual, mechanical, electrical, and automatic equipment, as directed.

**IV. ORGANIZATIONAL NOMENCLATURE**

Number of custodial staff determined as a function of the budget department.

**V. INNOVATIONS, EXPERIMENTAL IDEAS, OTHER PLANNED USES**

N/A

**VI. JUSTIFICATION FOR VARIANCE FROM SREF REQUIREMENTS**

A. 150 NSF from dining for golf cart storage area to accommodate two electrical carts.

**VII. PROGRAM FACILITIES LIST**

Design Codes	Spaces	Description	SREF Sq. Ft. Total	Proposed		Proposed	
				Sq. Ft. Per Unit	Sq. Ft. Total	Stu. Sta. Unit	Stu. Stat. Total.
<b>CUSTODIAL</b>							
330/331		Central Receiving, Toilets, Showers, Custodial Closets			1,334		
333	1	Flammable Storage			155		
334	1	Equipment Storage			500		
334	1	Golf Cart Storage (from dining)			150		
		<b>TOTAL</b>			<b>2,139</b>		

**VIII. PROGRAM FURNITURE AND EQUIPMENT**

**A. Custodial Foreperson Office**

No. of Items	Contractor Provided	District Provided (FF&E)	Description
1		X	Metal desk/workstation with chair
1		X	File cabinet, four-drawer, legal, lateral, lockable
2		X	Side arm chair,
1		X	Computer
1		X	Printer
1	X		Clock

Custodial

**B. Main Custodial Room/Central Receiving /Workroom/Equipment Storage**

No. of Items	Contractor Provided	District Provided (FF&E)	Description
4		X	Table with chair
1		X	Workbench
1		X	Time clock, automatic
1		X	Time card rack
1	X		Tack Board, 4' x 4'
1		X	File cabinet, four-drawer, legal, lateral, lockable
6		X	Stepladders: two 10'H, two 6'H, two 3'H
4		X	Custodial cart
1		X	Flat cart, four-wheel, for material handling
2		X	Vacuum cleaner, heavy-duty, wet/dry, with accessories
2		X	Vacuum cleaner, upright, high productivity, with beater bar
4		X	Vacuum cleaner, backpack, with accessories
1		X	Desk mover
1		X	Floor machine, 18" - 21", high speed, 275 - 300 rpm, for spray buff for resilient floor areas
1		X	Floor machine, 20", burnishing, 1500 - 2000 rpm
2		X	Floor machine, 18"W, standard
3		X	Hand truck
1		X	Telescoping ladder
2		X	Stripping brush, 18"W, Flo-Pac
1		X	Sweeper, battery-powered, interchangeable brush for inside/outside or push-type sweepers, with side broom
2		X	Floor Fan
1		X	Vise
2		X	Tank sprayer, plastic
1	X		First Aid kit, wall-mounted
3		X	Safety goggle
1		X	Screwdriver, set
1		X	Wrench, open-end set
1		X	Wrench, adjustable set (6", 8", 10")
1		X	Hammer
1		X	Electric drill, 3"
1		X	Drill set
1		X	Socket set (40 - piece)
1		X	Offset pliers
1		X	Regular pliers
1	X		Service sink (HW/CW)
1	X		Safety shower with no curb
1	X		Washer, commercial
1	X		Dryer, commercial
1	X		Eye wash station.
1	X		Refrigerator, residential, 22 cu. ft.
		X	Vending machine(s)
1	X		Fire blanket
	X		Fire extinguishers conforming to the State Requirements for Educational Facilities (S.R.E.F.)
1	X		Key box
6	X		Lockers
1	X		Clock

Custodial

**DRAFT SCHEDULED FOR 04/19/06 BOARD MEETING**

No. of Items	Contractor Provided	District Provided (FF&E)	Description
	X		Built-ins (refer to special considerations)

**C. Flammable Storage**

No. of Items	Contractor Provided	District Provided (FF&E)	Description
1		X	Blower, gasoline-powered, hand-held or backpack
1		X	Pressure sprayer, gasoline-powered
1		X	Pressure cleaner
	X		Fire extinguishers, per code
1	X		Fire blanket
	X		Built-ins (refer to special considerations)

**D. Service Closet (per closet)**

No. of Items	Contractor Provided	District Provided (FF&E)	Description
1	X		Service sink (HW/CW).
1		X	Service Cart
	X		Built-ins (refer to special considerations)

**E. Golf Cart Storage**

No. of Items	Contractor Provided	District Provided (FF&E)	Description
2		X	Golf Carts, electrical
	X		Built-ins (refer to special considerations)

**IX. SPECIAL CONSIDERATIONS - CONTRACTOR PROVIDED**

Refer to **GENERAL CONSIDERATIONS, GENERAL SECURITY CONSIDERATIONS AND TRAFFIC CONTROL.**

- A. Heating/Cooling/Ventilation** - As required to meet District Standards.
- B. Acoustical** - As required to meet District Standards.
- C. Floor** - As required to meet District Standards.
- D. Walls** - As required to meet District Standards. One-third of central receiving shall be partitioned with wire mesh for security storage.
- E. Ceiling** - As required to meet District Standards.
- F. Lighting** - As required to meet District Standards. Provide explosion proof in Custodial

flammable storage.

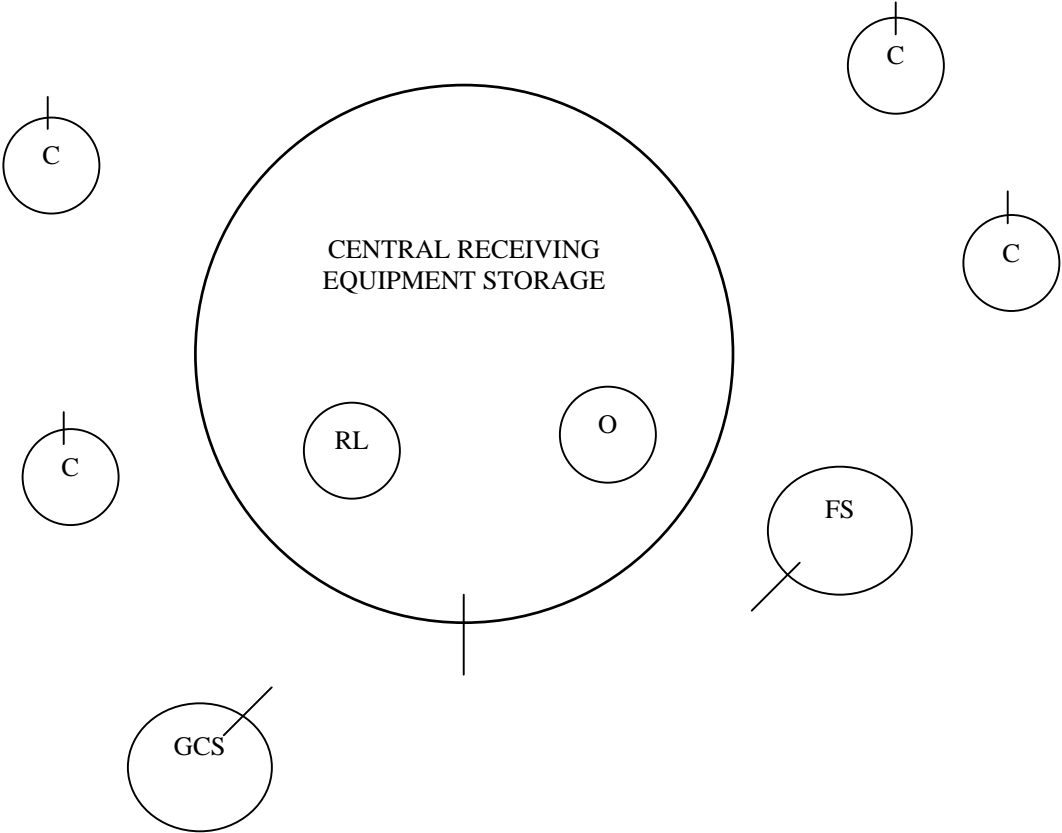
- G. Windows** - Provide vision window from custodian's office to custodial workroom and central receiving. None, for security reasons.
- H. Doors** - As required to meet District Standards. Provide metal doors, lockable, extra wide or overhead for receiving. Provide metal doors for flammable storage area, with at least 6'W opening. Provide metal door with at least 6' W opening for golf cart storage.
- I. Plumbing Fixtures/Water** - As required to meet District Standards.
- J. Communications** - As required to meet District Standards.
- K. Electrical** - As required to meet District Standards
- L. Instructional Technology** - As required to meet District Standards.
- M. Gas and Air** - As required to meet District Standards.
- N. Safety** - As required to meet District Standards.
- O. Fencing** - As required to meet District Standards.
- P. Service Drives** - Service drive to central receiving storage area with loading area. As required to meet District Standards.
- Q. Parking** - Storage and charging area for battery-powered carts. As required to meet District Standards.
- R. Built-ins**
  - 1. **Central Receiving:** Provide adjustable, 18"D, steel shelving, floor-to-ceiling on all walls, plus sufficient, free-standing shelving to provide storage. Provide six (6) lockers for custodial staff. Provide wire mesh and adjustable, 18"D, steel shelving, floor-to-ceiling for storage area in central receiving.
  - 2. **Service Closets:** Provide adjustable, 12"D, steel shelving, on one wall, mid-wall to ceiling.
  - 3. **Golf Cart Storage:** Provide adjustable, 12"D, steel shelving, on one wall, mid-wall to ceiling
- S. Other Considerations**
  - 1. Trash compactor, located in depressed area, to accept and compact all trash and

Custodial

garbage for pick-up by local trash contractor.

**SPATIAL RELATIONSHIPS**

**Custodial**



FS = Flammable Storage  
C = Closets, per SREF  
O = Office  
RL = Restroom/Lockers/Showers  
GCS = Golf Cart Storage

Custodial

**EXCEPTIONAL STUDENT EDUCATION**

**I. PROGRAM PHILOSOPHY**

All exceptional students are entitled to receive appropriate educational services in the least restrictive environment which will enable them to have full equality of opportunity. Instructional program must fully meet the educational needs of students who deviate from the average to the extent that they require special education to develop their maximum potential.

**II. PROGRAM GOALS**

Students with special learning differences will be provided educational programs designed to meet their individual needs. Diagnostic evaluation, prescriptive planning and implementation of individual student programs will be provided.

**III. PROGRAM ACTIVITIES**

**A. General Activities**

Individualized and group instruction will be provided in academic and enrichment curriculum areas.

**B. Special Activities**

**1. Specific Learning Disabilities/Hearing/Visually Impaired**

- a. Basic instruction in reading, mathematics and language arts.
- b. Behavior adjustment and small group interaction.
- c. Diagnostic evaluation; individualized programmed instruction; use of teaching machines, audio-visual equipment and study carrels.
- d. Gross-and fine-motor skills / instruction

**2. Educable Mentally Handicapped**

- a. Basic instruction in reading, language arts, mathematics, daily living skills, practical science, career education and use of leisure time.
- b. Personal and social adjustment skills development.

**3. Emotionally Handicapped**

- a. Behavior management techniques to effect behavioral changes in students.
- b. Structured program to arrange situations where students frequently experience success.
- c. Affective curriculum emphasizing positive self-concept.
- d. Academic instruction: remedial and / or regular curriculum.

Exceptional Student Education



- e. Functional life skills.
- 4. **Trainable Mentally Handicapped**
  - a. Self-management / home living skills
  - b. General community functioning skills
  - c. Functional pre-academics / academics
  - d. Embedded communication / motor / social skills
  - e. Recreation / leisure skills
  - f. Vocational skills
- 5. **Physically Handicapped**
  - a. Academic instruction
  - b. Self-care skills
  - c. Socialization skills
  - d. Communication skills
- 6. **Supplementary Instruction - Speech, Language and Testing**
  - a. Diagnostic testing.
  - b. Audiometric examinations.
  - c. Individual and small group instruction in an acoustically controlled environment.

#### **IV. ORGANIZATIONAL NOMENCLATURE**

Teacher - Student Ratio

Self contained Instructional Classrooms: 1:10

Includes Physically Handicapped, Emotionally Handicapped and Trainable Mental Handicapped.

Part-Time Instructional Classrooms: 1:15

Includes Educable Mentally Handicapped, Specific Learning Disability, Hearing/Visually Impaired.

#### **V. INNOVATIONS, EXPERIMENTAL IDEAS, OTHER PLANNED USES -**

- A. Other instructional uses can be for English for Speakers of Other Languages.

#### **VI. JUSTIFICATION FOR VARIANCE FROM SREF REQUIREMENTS**

- A. ESE and Kindergarten Outside Storage have been combined into one space
- B. Supplementary Instruction spaces are to be used for Speech, Hearing and Vision Testing and for Crisis Intervention Office & Psychological Testing.
- C. ESE Classrooms and related spaces shall be disbursed throughout the campus in compliance with the School District inclusion philosophy and can be used as general

Exceptional Student Education

classrooms for flexibility purposes.

- D. Material storage and student storage shall be folded into the ESE Resource Room to create a larger instructional space.
- E. ESE restroom/changing room with shower, 3' x 5', wheelchair, roll-in capability, toilet, cot and sink in compliance with F.A.C.B.C. shall be provided. Restroom shall be a separate sterile space with private corridor entrance opening to the hallway.
- F. Combine material storages to create ESE Department Storage.
- G. Restrooms have been added to ESE Resource Rooms for flexibility purposes and enhancement of supervision of students.
- H. ESE classrooms should be located on the ground floor whenever possible.

**VII. PROGRAM FACILITIES LIST**

Design Codes	Spaces	Description	Sq. Ft Total	Proposed		Proposed	
				Sq. Ft. Per Unit	Sq. Ft. Total	Stu. Sta. Unit	Stu. Stat. Total.
<b>EXCEPTIONAL STUDENT EDUCATION</b>							
062	8	Self Contained Classroom for ESE Pre-K	900		7,200	10	80
808	8	Material Storage	45		360		
348	4	Shared Kitchen	100		400		
811	8	Outside Storage (combined into one space)	50		400		
814	8	Student Restroom - M/F	55		440		
		<b>Subtotal</b>			<b>8,800</b>		
061	1	Part-Time Classroom		900	900	15	15
808	1	Material Storage		45	45		
814	1	Student Restroom - M/F		45	45		
		<b>Subtotal</b>			<b>990</b>		
062	1	Self Contained Classroom		900	900	10	10
808	1	Material Storage		45	45		
811	1	Outside Storage (combined into one space with kindergarten)		50	50		
814	1	Student Restroom - M/F		45	45		
		<b>Subtotal</b>			<b>1,040</b>		
066	2	Supplementary Instruction with storage folded into room		200	400		
070	2	Office/Testing/Itinerant		200	400		
		<b>Subtotal</b>			<b>800</b>		
065	1	ESE Resource Room with storage folded into room		520	520		
815/816	1	Student Restroom (out of allotment)					
		<b>Subtotal</b>			<b>520</b>		
817	1	ESE Changing Room/Restroom			150		
308	1	ESE Department Storage			200		
		<b>Subtotal</b>			<b>350</b>		

Exceptional Student Education

**DRAFT SCHEDULED FOR 04/19/06 BOARD MEETING**

Design Codes	Spaces	Description	Sq. Ft Total	Proposed		Proposed	
				Sq. Ft. Per Unit	Sq. Ft. Total	Stu. Sta. Unit	Stu. Stat. Total.
		<b>TOTAL</b>			<b>12,500</b>		<b>105</b>

**VIII. PROGRAM FURNITURE AND EQUIPMENT**

**A. Specific Learning Disabilities/Educable Mentally Handicapped**

No. of Items	Contractor Provided	District Provided (FF&E)	Description
10-15		X	Student desk, adjustable
10-15		X	Student chair, adjustable
1		X	File cabinet, four-drawer, vertical or lateral, lockable
1		X	Storage cabinet, portable
1		X	Table, round, 48"
1		X	Table, kidney-shaped
2		X	Carrel, adjustable, with electrical outlets for various equipment
5		X	Chairs, stackable
	X		Built-ins (refer to special considerations)

**B. Emotionally Handicapped**

No. of Items	Contractor Provided	District Provided (FF&E)	Description
5-10		X	Student desk, adjustable
5-10		X	Student chair, adjustable
1		X	File cabinet, four-drawer, vertical or lateral, lockable
1		X	Storage cabinet, portable
1		X	Table, round, 48"
1		X	Table, kidney-shaped
2		X	Carrel, adjustable, with electrical outlets for various equipment
5		X	Chairs, stackable
	X		Built-ins (refer to special considerations)

**C. Trainable Mentally Handicapped**

No. of Items	Contractor Provided	District Provided (FF&E)	Description
2		X	Table, rectangular
1		X	Table, kidney-shaped
1		X	File cabinet, four-drawer, vertical or lateral, lockable
1		X	Aide desk and chair
10		X	Chair
4		X	Partition on casters
1		X	Play furniture: table and chairs, refrigerator, stove and sink
10		X	Desk or table, individual, for students
10		X	Cot

Exceptional Student Education

**DRAFT SCHEDULED FOR 04/19/06 BOARD MEETING**

<b>No. of Items</b>	<b>Contractor Provided</b>	<b>District Provided (FF&amp;E)</b>	<b>Description</b>
1		X	Cabinet, cubbyholes, with plastic trays on one side, general storage on the other, approximately, 47"L x 67"H x 23"D, on casters
	X		Built-ins (refer to special considerations)

**D. Physically Handicapped**

<b>No. of Items</b>	<b>Contractor Provided</b>	<b>District Provided (FF&amp;E)</b>	<b>Description</b>
1		X	Table, kidney shaped
3		X	Desk (3), adjustable
1		X	File cabinet, four-drawer, vertical or lateral, lockable
10		X	Chair, student
2		X	Table, adjustable legs, 29"L x 27"W x 25"- 30"H
2		X	Study carrel, adjustable, with electric outlets for various equipment
1		X	Therapy stool
1		X	Cabinet, cubbyholes, with plastic trays on one side, general storage on the other, approximately, 47"L x 67"H x 23"D, on casters
	X		Built-ins (refer to special considerations)

**E. Hearing Impaired**

<b>No. of Items</b>	<b>Contractor Provided</b>	<b>District Provided (FF&amp;E)</b>	<b>Description</b>
8		X	Desk, student
12		X	Chair, student
1		X	File cabinet, four-drawer, vertical or lateral, lockable
1		X	Table, round, adjustable
2		X	Table, rectangular, adjustable
2		X	Partition, on casters
1		X	Telecommunication devise for the hearing impaired (TTY) with telephone
1		X	Cabinet, cubbyholes, with plastic trays on one side, general storage on the other, approximately, 47"L x 67"H x 23"D, on casters
	X		Built-ins (refer to special considerations)

**F. Visually Impaired**

<b>No. of Items</b>	<b>Contractor Provided</b>	<b>District Provided (FF&amp;E)</b>	<b>Description</b>
1		X	File cabinet, four-drawer, vertical or lateral, lockable
1		X	Table, round, adjustable
2		X	Table, rectangular, adjustable
2		X	Study carrel, adjustable, with electric outlets for various equipment

Exceptional Student Education

**DRAFT SCHEDULED FOR 04/19/06 BOARD MEETING**

<b>No. of Items</b>	<b>Contractor Provided</b>	<b>District Provided (FF&amp;E)</b>	<b>Description</b>
3		X	Shelving unit, lockable, adjustable shelves, 84"H x 36"W x 16"D
1		X	Braille typewriter and table
1		X	Cabinet, cubbyholes, with plastic trays on one side, general storage on the other, approximately, 47"L x 67"H x 23"D, on casters
5		X	Chairs, stackable
	X		Built-ins (refer to special considerations)

**G. Resource Room**

<b>No. of Items</b>	<b>Contractor Provided</b>	<b>District Provided (FF&amp;E)</b>	<b>Description</b>
12		X	Student chair, adjustable
1		X	File cabinet, four-drawer, vertical or lateral, lockable
1		X	Table, round, adjustable
1		X	Study carrel, adjustable, with electric outlets for various equipment
1	X		Teacher storage cabinet, 36"W x 30"D x 72"H, with adjustable shelving, lockable
2-4		X	Computer Table
1	X		Built-ins (refer to special consideration)

**H. Supplementary Instruction Room & Office /Testing (Speech/Language/Testing)**

<b>No. of Items</b>	<b>Contractor Provided</b>	<b>District Provided (FF&amp;E)</b>	<b>Description</b>
4		X	Student chair, adjustable
1		X	Teacher desk and chair
1		X	File cabinet, four-drawer, vertical or lateral, lockable
1		X	Teacher Computer & Printer
1		X	Table, round, adjustable
1		X	Computer desk with wire management
1		X	Study carrel, adjustable, with electric outlets for various equipment
1	X		Teacher storage cabinet, 36"W x 30"D x 72"H, with adjustable shelving, lockable
1	X		Marker Board, 4' x 8', with map rails and flag holder
1	X		Tack Board, 4' x 4'
1	X		8'w x 6'h video format screen with black masking borders
1		X	Computer
1		X	Printer
1		X	Pencil Sharpener, electric
1	X		Clock
1	X	X	Sound Field Enhancement (for hearing impaired only)

**I. All ESE Instructional Rooms (except Supplementary Instruction)**

Exceptional Student Education

**DRAFT SCHEDULED FOR 04/19/06 BOARD MEETING**

<b>No. of Items</b>	<b>Contractor Provided</b>	<b>District Provided (FF&amp;E)</b>	<b>Description</b>
1		X	Teacher Computer & Printer
1	X		Marker Board, 4' x 16', with map rails and flag holder
4	X		Tack Board, 4' x 4'
1	X		8'w x 6'h video format screen with black masking borders
1	X		Provide stainless steel sink with goose neck faucet (CW) and water jet drinking fountain accessible to disabled; no electric eye drinking fountain.
4		X	Computers
2		X	Printers
1		X	Pencil sharpener, electric
1	X		Clock
1	X	X	LCD Projector
1	X		Multimedia cabinet (refer to General Considerations)
1	X		Workstation (refer to General Considerations)
1		X	Document camera
1		X	DVD/VCR Combo
1		X	Wireless Laptop cart
1	X	X	Sound Field Enhancement System
	X		Built-ins (refer to special considerations)

**J. ESE Restroom/Changing Room**

<b>No. of Items</b>	<b>Contractor Provided</b>	<b>District Provided (FF&amp;E)</b>	<b>Description</b>
1		X	Cot
1	X		Fold down changing table
1	X		F.A.C.B.C. Shower with no curb and with fold down seat in shower
1	X		Built-ins (refer to special considerations)

**K. ESE Pre-Kindergarten**

<b>No. of Items</b>	<b>Contractor Provided</b>	<b>District Provided (FF&amp;E)</b>	<b>Description</b>
4-6		X	Table, trapezoidal or round table
1		X	Table, kidney or horseshoe
2		X	Table, rectangular
20-30		X	Chair, stackable 12"-14"
1		X	File cabinet, four-drawer, legal, lateral, lockable
1		X	Bulletin board, movable
1		X	Serving cart, portable
1		X	Learning stations
1		X	Adjustable easel with tray
1		X	Pencil sharpener, electric
1		X	Set of child-size housekeeping furniture, various pieces
1		X	Mirror, full-length
1		X	Walking beam
1		X	Set of indoor hollow blocks, eight-pieces each set

Exceptional Student Education

**DRAFT SCHEDULED FOR 04/19/06 BOARD MEETING**

<b>No. of Items</b>	<b>Contractor Provided</b>	<b>District Provided (FF&amp;E)</b>	<b>Description</b>
1		X	Set of tools
1		X	Set of wooden blocks
1		X	Movable cabinet, 4'H x 4'W x 18"D, with several drawers
3		X	Movable cabinet, 3'H x 3'W x 18"D, of various compartments and sizes
1		X	Portable counter top, open shelf unit, with two adjustable shelves
1		X	Area rug, 10'W x 12'L
4		X	Computers
2		X	Printers
1	X		Marker Board, 4' x 16', with map rails and flag holder. Height from floor shall accommodate Pre-Kindergarten children.
2	X		Tack Board, 4' x 4'
1	X		6' x 8' video format screen with black masking borders
1		X	Book rack, with shelves, easily accessible to children, and back of the shelves covered with bulletin board
1	X		Parent Message Board (outside door)
1		X	Bookcase
1	X		Clock
1	X		Stainless steel sink with goose neck faucet (CW) and ADA water jet drinking fountain.
1	X		Art Activity Sink
1	X		Multimedia cabinet (refer to General Consideration)
1	X		Workstation (refer to General Consideration)
1		X	DVD/VCR Combo
1		X	Document Camera
1		X	Wireless Laptop cart
1	X	X	LCD Projector
1	X	X	Sound Field Enhancement
	X		Built-ins (refer to special considerations)
	X		Changing Table with stairs and drawers/cabinet in the ESE Pre-Kindergarten restroom
	X		Linen Cabinet in the ESE Pre-Kindergarten restroom

**L. Outdoor Play Area For ESE Pre-Kindergarten**

<b>No. of Items</b>	<b>Contractor Provided</b>	<b>District Provided (FF&amp;E)</b>	<b>Description</b>
1		X	Triple arch climbers
1		X	Permanently installed walking beams
1		X	Set of horizontal bars, 3'H
1		X	Large barrel set in concrete
1		X	Slide, 4'H
2		X	Sandbox (2), with hinged cover, approximately, 10' x 10' with seat around edge made of treated wood
		X	Tricycle
		X	Wagon
		X	Truck
		X	Tractor
		X	Scooter

Exceptional Student Education

**DRAFT SCHEDULED FOR 04/19/06 BOARD MEETING**

<b>No. of Items</b>	<b>Contractor Provided</b>	<b>District Provided (FF&amp;E)</b>	<b>Description</b>
		X	Various Outside Toys
1		X	Convertible water/sand table
1	X		Circular concrete track for Motor Skills
1	X		Outside storage, lockable area for large play equipment
1	X		Sink with goose neck faucet (CW) and ADA water jet drinking fountain.
1		X	Outdoor Tables/Chairs
1	X		Playground Equipment

**M. Shared Kitchen (per kitchen)**

<b>No. of Items</b>	<b>Contractor Provided</b>	<b>District Provided (FF&amp;E)</b>	<b>Description</b>
1	X		Microwave oven
1	X		Refrigerator, 22 cu. ft. w/freezer & Icemaker
1	X		Stainless steel, double bowl, sink with separate goose neck faucets (CW)
1	X		Dishwasher
	X		Built-ins (refer to special considerations)

**IX. SPECIAL CONSIDERATIONS - CONTRACTOR PROVIDED**

Refer to **GENERAL CONSIDERATIONS, GENERAL SECURITY CONSIDERATIONS AND TRAFFIC CONTROL.**

- A. Heating/Cooling/Ventilation** - As required to meet District Standards.
- B. Acoustical** - As required to meet District Standards.
- C. Floor** - As required to meet District Standards.
- D. Walls** - As required to meet District Standards.
- E. Ceiling** - As required to meet District Standards.
- F. Lighting** - As required to meet District Standards.
- G. Windows** - As required to meet District Standards.
- H. Doors** - As required to meet District Standards.
- I. Plumbing Fixtures/Water** - As required to meet District Standards. Architect shall work with District Staff on the location and number of showers for the ESE Pre-Kindergarten rooms.
- J. Communications** - As required to meet District Standards. Provide a telephone

Exceptional Student Education



jack and a dedicated line for telecommunication hearing and visually impaired.

- K. **Electrical** – As required to meet District Standards.
- L. **Instructional Technology** - As required to meet District Standards.
- M. **Gas and Air** - As required to meet District Standards.
- N. **Safety** - As required to meet District Standards.
- O. **Fencing** - As required to meet District Standards.
- P. **Service Drives** - As required to meet District Standards.
- Q. **Parking** - As required to meet District Standards. Drop-off/pick-up and parking for the parents shall be located near the Pre-Kindergarten classrooms.
- R. **Built-ins** -
  - 1. **Self Contained; Part-Time, ESE Resource Rooms & ESE Pre-Kindergarten**
    - a. Provide cubbyholes (22), 15"H x 15"W x 15"D (clear inside) and no higher than 40" from floor. No cubbyholes in ESE Resource Rooms.
    - b. Provide base cabinet with sink and lockable doors and adjustable shelves and upper cabinets with lockable doors and adjustable shelves.
    - c. Provide computer counter to accommodate four (4) computers and two (2) printers (14'W x 30"D). The counter shall have grommets for wire management. No built-in computer counter in ESE Resource Rooms.
    - d. Provide Multimedia cabinet and workstation. Refer to General Considerations.
    - e. Provide metal shelving (3 – 36"w x 18"d x 80"h) in storage.
    - f. Provide metal adjustable shelving starting at 4' a.f.f. to ceiling inside outdoor storage for Pre-Kindergarten outside storage.
  - 2. **ESE Department Storage**
    - a. Provide metal shelving on three walls, floor to ceiling.

3. **ESE Changing Room**

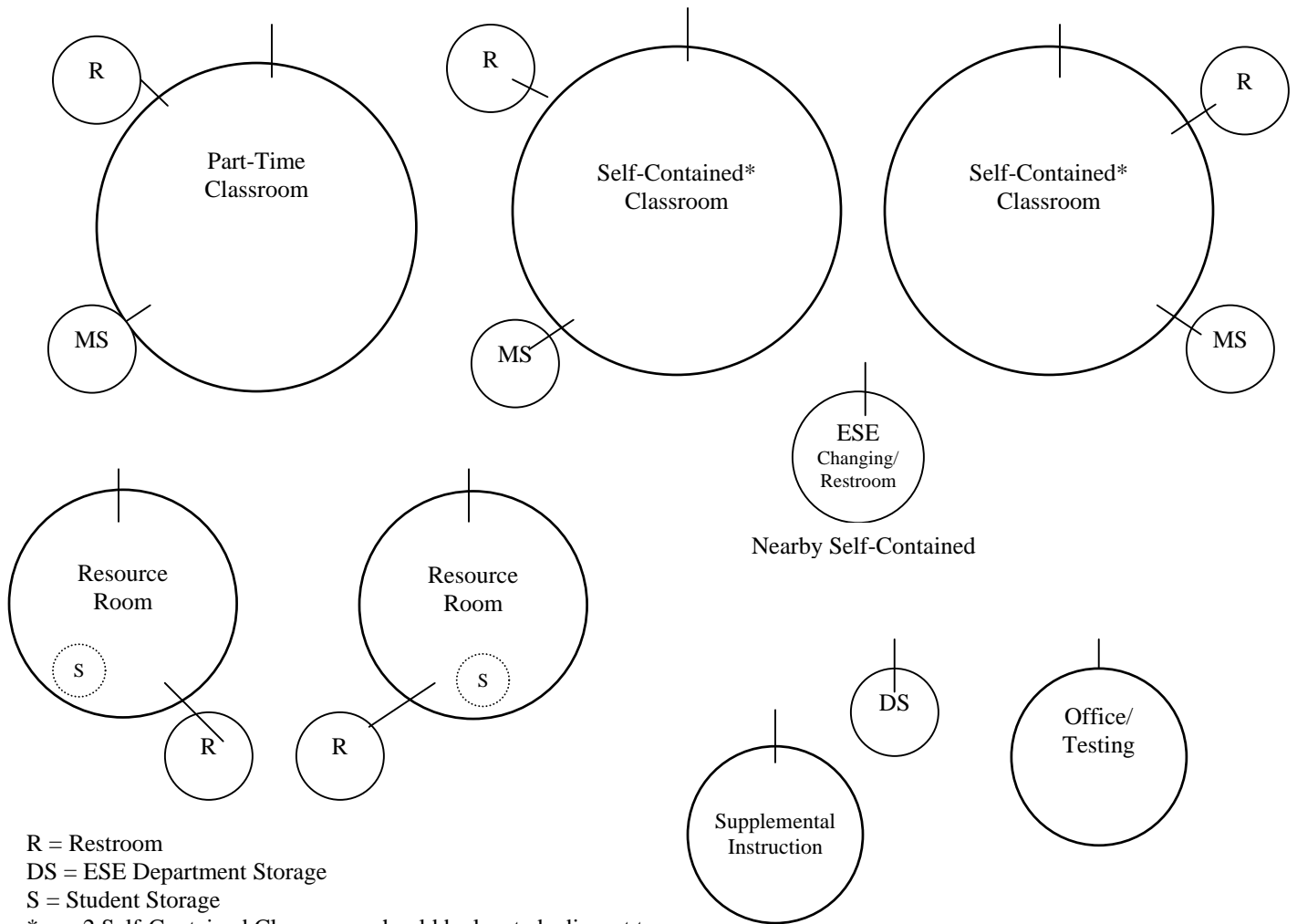
- a. Provide storage cabinet, 24”w. x 18”d.x 72”h. with lockable doors and adjustable shelves.

S. **Other Considerations** –

1. The use of observation window(s) in ESE classroom(s) will be reviewed on a school-by-school basis.
2. The architect shall work with District staff with regards of the placement of ESE classrooms on the floor plan.
3. Provide an 8’ wide min. overhang from the classroom to the outdoor play area for the use of outdoor activities for ESE Pre-Kindergarten.
4. Provide playground equipment with poured in place rubberized surface for ESE Pre-Kindergarten. Schools going under modernization shall have the playground equipment evaluated and replaced as needed. Playground equipment and poured in place must meet FACBC, SDPBC Risk Management, SDPBC Maintenance Plant Operations and SDPBC Building Department standards.
5. Not all Pre-Kindergarten kitchens need a dishwasher. The architect shall work with District staff with regards to the location of the dishwashers in the Pre Kindergarten kitchens.

## SPATIAL RELATIONSHIPS

### Exceptional Student Education

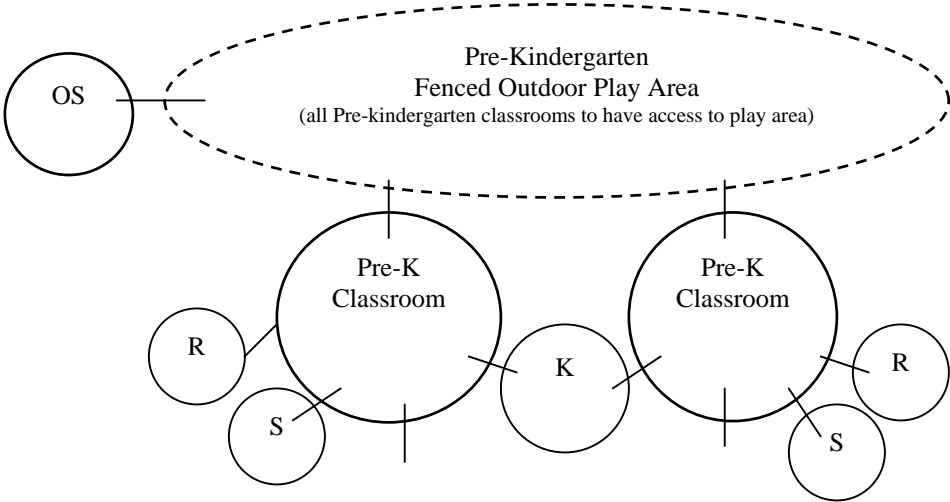


R = Restroom  
DS = ESE Department Storage  
S = Student Storage  
\* = 2 Self-Contained Classrooms should be located adjacent to one another. Other spaces to be distributed throughout school

Not all spaces are shown

**SPATIAL RELATIONSHIPS**

**Exceptional Student Education  
Pre-Kindergarten**



R = Restroom  
S = Storage  
OS = Outside Storage  
K = Kitchen

Not all spaces are shown

**FOOD SERVICES/MULTIPURPOSE**

**I. PROGRAM PHILOSOPHY**

Refer to overall. (Page 1)

**II. PROGRAM GOALS**

- A. School Food Services intends to offer nutritious food necessary to maintain good health and welfare for all students.
- B. School Food Services shall provide gainful educational experiences for students.
- C. School Food Services facilities shall also serve school and community functions.

**III. PROGRAM ACTIVITIES**

**A. Dining**

- 1. Student dining
- 2. Faculty dining

**B. Kitchen**

- 1. Preparation
  - a. Baking
  - b. General preparation
  - c. Production

**C. Servery**

- 1. Student serving line
- 2. Serving line support equipment

**D. Storage and Maintenance**

- 1. Receiving
- 2. Food storage
- 3. Non-Food storage
- 4. Can wash
- 5. Laundry
- 6. Food Service Mop Room

**E. Ware washing and Refuse Removal**

1. Dishwasher
2. Pulping system
3. Pot washing

**F. Staff Areas**

1. Employee restrooms
2. Office

**IV. ORGANIZATIONAL NOMENCLATURE**

Student Capacity Per Feeding Period: 323

Grade Levels for Which Program is Intended: K-5

**V. INNOVATIONS, EXPERIMENTAL IDEAS, OTHER PLANNED USES**

- A. Teacher dining/lounge shall be accessible to kitchen/serving area.
- B. Dining area, will also serve as an auditorium facility, with stage on opposite end from serving area.
- C. Dining area shall be accessible from parking area to facilitate community use.
- D. Consideration shall be given to students entering and exiting the cafeteria to avoid congestion.

**VI. JUSTIFICATION FOR VARIANCE FROM SREF REQUIREMENTS**

- A. Dining and Multipurpose shall be combined into one space.
- B. Staff dining/lounge shall be 700 NSF making the dining area more adequately sized for staff use.
- C. 150 NSF from dining room to custodial golf cart storage.
- D. The kitchen area shall be 3,600 NSF based upon the prototype kitchen designed by SDPBC School Food Service.

**VII. PROGRAM FACILITIES LIST**

Design Codes	Spaces	Description	SREF Sq. Ft. Total	Proposed		Proposed	
				Sq. Ft. Per Unit	Sq. Ft. Total	Stu. Sta. Unit	Stu. Stat. Total.
<b>FOOD SERVICE/MULTIPURPOSE</b>							
340	1	Dining/Multipurpose (150 NSF to Custodial Golf Cart Storage)			5,178		
341	1	Kitchen (including office and restroom - prototype)			3,600		
349	1	Chair Storage			192		
316	1	Staff Dining/Lounge			700		
819/820		Staff Restrooms (out of allotment)					
815/816		Student Restrooms (out of allotment)					
<b>TOTAL</b>					<b>9,670</b>		

**VIII. PROGRAM FURNITURE AND EQUIPMENT**

**A. Student Dining Area**

No. of Items	Contractor Provided	District Provided (FF&E)	Description
65		X	Cafeteria table, folding, 29" maximum height
323		X	Cafeteria chair, one per student for largest service period; 18" is suggested as a suitable seat height for all age groups
		X	Vending machine(s)

**B. Facility Dining Area**

No. of Items	Contractor Provided	District Provided (FF&E)	Description
10		X	Table, round, folding
50		X	Chair, stackable
		X	Vending machine(s)
	X		(10) linear feet of base and wall cabinets, to include (1) sink and (1) adjacent bank of (3) graduated drawers. The counter top is to be 36" above the finished floor.
1	X		18 cubic foot refrigerator
1	X		Microwave
	X		Provide serving equipment consisting of the following components: 3-well hot food unit with sneeze guard; 60" refrigerated cold pan with over shelf and sneeze guard; (2) 36" open top utility counters for desert display.

**C. Employee Restroom/Locker Area**

No. of Items	Contractor Provided	District Provided (FF&E)	Description
1	X		Full-length mirror.
10	X		Individual coat sized lockers with locks.
1	X		First aide cabinet

**D. Office**

No. of Items	Contractor Provided	District Provided (FF&E)	Description
1		X	Desk & Chair
1		X	Filing Cabinet
1		X	Computer
1		X	Printer
1		X	Fax Machine
	X		(6) linear feet of counter top with base cabinets and wall cabinets. Wall cabinets to be 14” deep and located over countertop.

Refer to SDPBC School Food Service Department’s Generic Educational Specification for layouts, equipment and Special Considerations.

**IV. SPECIAL CONSIDERATIONS - CONTRACTOR PROVIDED**

Refer to **GENERAL CONSIDERATIONS, GENERAL SECURITY CONSIDERATIONS AND TRAFFIC CONTROL.**

- A. **Heating/Cooling/Ventilation** - As required to meet District Standards.
- B. **Acoustical** - As required to meet District Standards
- C. **Floor** – As required to meet District Standards.
- D. **Walls** – As required to meet District Standards.
- E. **Ceiling** - As required to meet District Standards.
- F. **Lighting** - As required to meet District Standards.
- G. **Windows** – As required to meet District Standards.
- H. **Doors** - As required to meet District Standards.
- I. **Water** - As required to meet District Standards.
- J. **Communications** - As required to meet District Standards. Intercom with volume  
Food Services

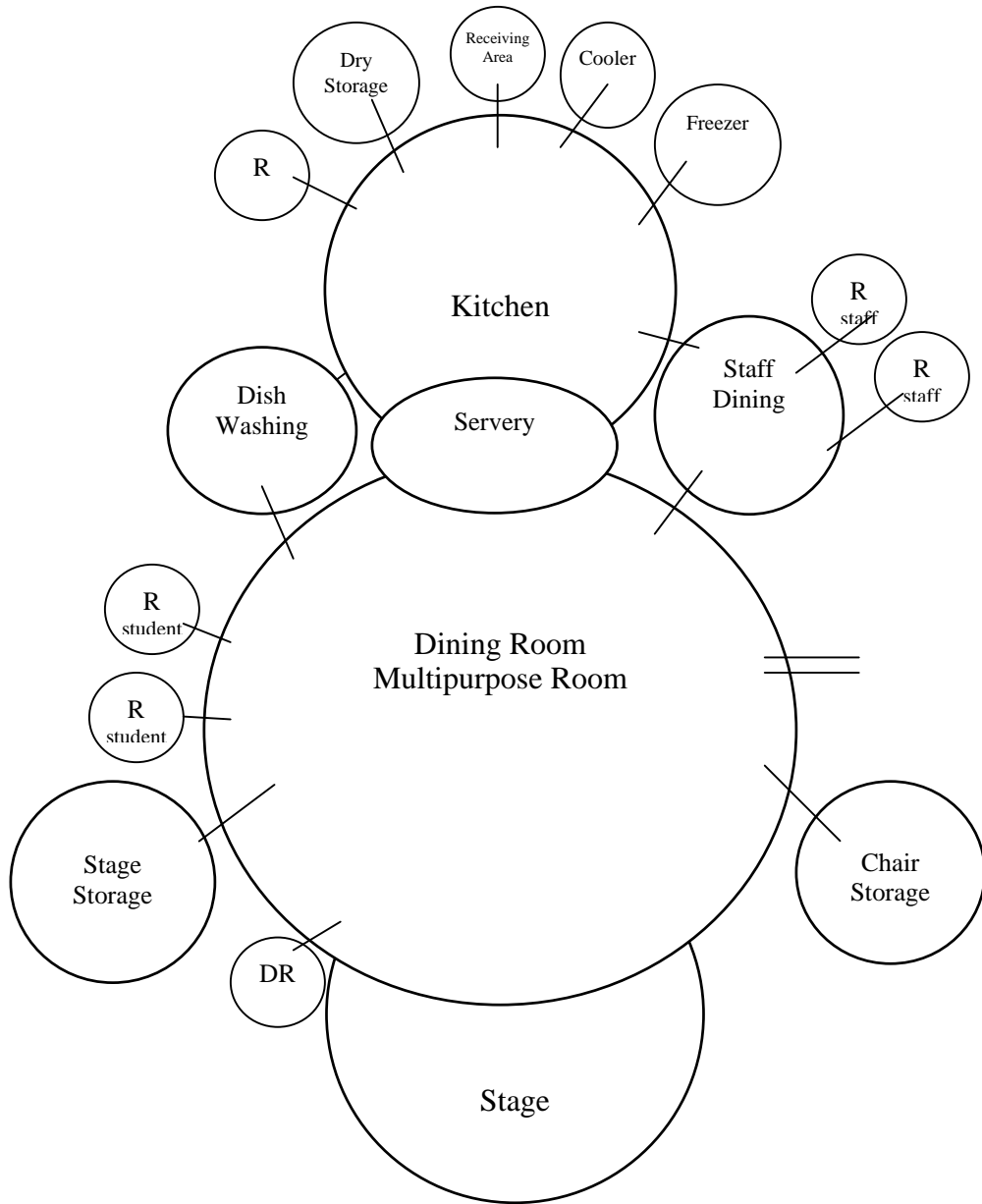


**DRAFT SCHEDULED FOR 04/19/06 BOARD MEETING**

control in office, kitchen and dining areas. TV receiver outlets in dining areas and specifically stage left/right walls, and origination outlet opposite side on a non-service wall. ITV broadcast capability from dining room. Provide microphone outlets: (6) in the cafetorium, (4) on stage.

- K. Electrical** - As required to meet District Standards.
- L. Instructional Technology** - As required to meet District Standards.
- M. Gas and Air** - As required to meet District Standards.
- N. Safety** - As required to meet District Standards.
- O. Fencing** - As required to meet District Standards.
- P. Service Drives** - As required to meet District Standards.
- Q. Parking** - Space (10) for food service employees, satellite vans and delivery vehicles. As required to meet District Standards.
- R. Built-ins** – Provide tack board, 4' x 8' in dining area, 4' x 4' in kitchen preparation area and 4' x 4' in employee locker area.
- S. Other Considerations** – N/A

**SPATIAL RELATIONSHIPS**  
**Food Services/Multipurpose Room & Stage**



R = Restroom  
DR = Dressing Room/Office

**LIBRARY MEDIA CENTER**

**I. PROGRAM PHILOSOPHY**

Refer to overall. (Page 1)

**II. PROGRAM GOALS**

The Library Media Center is an extension of the classroom, and as such, provides services which achieve the following goals:

- A. Access – Ensures and facilitates easy, open access to organized educational media for students, teachers, parents and other in the learning community.
- B. Collection Development - Locate, acquire and disseminate learning materials that are cooperatively selected by the learning community.
- C. Collaboration – Collaborate with members of the learning community for effective utilization of educational media to meet the curriculum standards.
- D. Instruction – Instruction individuals and groups in the life long reading, information literacy and technical skills identified for 21<sup>st</sup> Century learners.

**III. PROGRAM ACTIVITIES**

The school library media center serves students, teachers, parents, school staff members, administrators, and people in the local comThe center's space serves as a meeting place for students, staff, and community groups, requiring flexible access for activities during the school day, before or after school hours, and during the evening hours.

- A. Activities for Students
  - 1. Receiving instruction in large, class-size, small groups or individual with the capacity to accommodate simultaneous small and large group activities.
  - 2. Using the instructional television equipment, projection equipment or computer technology.
  - 3. Displaying creative promotional & literacy activities on bulletin boards, dry eraser boards and in lockable showcases.
  - 4. Participating and interacting in lectures, projected presentations, demonstrations, and other instructional activities.
  - 5. Preparing and presenting multimedia presentations with projection and sound capability.

Library Media Center

6. Browsing and leisure reading of books, periodicals, newspapers, computer programs and the Internet.
7. Engaging in inquiry with reference resources: books, CD-ROM and the Internet.
8. Engaging in individual study for career information, community resources, and self-improvement.
9. Accessing information for individual reports, multimedia projects, letters, and other documents related to educational purposes.
10. Searching, identifying and requesting information or resources from other libraries or information locations through inter-library loan.

**B. Activities for School Faculty, Staff and Parents**

All eleven capabilities listed above for students are also applicable for faculty and school staff. Other staff activities are:

1. Previewing and selecting materials for classroom use.
2. Preparing instructional materials.
3. Meeting with library media specialist and staff or other colleagues for collaboration on lesson plans, curriculum development and resource acquisition.
4. Utilizing the library media center's resources and other external resources via ITV, The Education Network (TEN), inter-library loan or the Internet for curriculum development.
5. Engaging in distance learning.
6. Using multimedia tools and projection units.
7. Viewing current resources and data for parents.

**C. Activities for Library Media Center Specialist and Library Media Staff**

1. Providing Technical Services: selection, acquisition, receiving orders and donations, cataloging and database maintenance, processing, binding, inventorying and other functions required to organize and maintain the collection of a library media center.
2. Functioning as school leader(s) for technology development by providing new resources and technologies in the library media center and by providing technical expertise as a member of school improvement and technology committees.

Library Media Center

3. Providing instruction for students and faculty in inquiry methods, library research, information literacy and presentation of the results.
4. Assisting students, faculty and staff in selecting and effectively using instructional media in all formats.
5. Planning with teachers, administrators and paraprofessionals for curriculum development and use of instructional media for various school disciplines.
6. Maintaining accurate financial records and budgeting effective use of resources and time.
7. Supervising media staff, student aides and volunteers.
8. Coordinating media center functions with school administrators, faculty, community leaders, students and school staff, including custodial and secretarial personnel.
9. Booktalks and promotional activities.

#### **IV. ORGANIZATIONAL NOMENCLATURE**

Grade Levels for Which Program is Intended: K-5

#### **V. INNOVATIONS, EXPERIMENTAL IDEAS, OTHER PLANNED USES**

- A. New developments in educational programs, instructional methods and class groupings and the uses of media resources that accompany them, dictate an element of flexibility for the library media program. Physical facilities must have flexible characteristics.
- B. Expanded individual and group use of audio-visual materials and computer equipment.
- C. Available computer retrieval of information from LAN, WAN and on-line services.
- D. Use of library media center for community and after school activities.
- E. Staff and student workshops.
- F. Extended library hours for access by patrons.
- G. Creativity Areas that will provide learning experiences for students and facility. These institutional units will include the following:
  1. Production of video and audio programs and computer generated materials.
  2. Seminars and forums.
  3. Instruction in the use of on-line access of information.
  4. Development of resource sharing activities.

Library Media Center



**VI. JUSTIFICATION FOR VARIANCE FROM SREF REQUIREMENTS**

- A. Periodical Storage, Group Projects and Small Group Listening shall be combined with the Reading/Stacks area.
- B. Professional Library, Media Production, and Copying Room shall be combined into one space for flexibility purposes.
- C. AV Storage and Repair, CCTV Storage, and Maintenance/Repair shall be combined to increase the area for large equipment.
- D. Because of location of Library Media Center and current staffing, a restroom shall be accessible to all staff.
- E. Technical processing shall be combined with the Library Media Specialist’s office for a total of 350 NSF. Remaining 150 NSF shall be folded into Reading/Stacks.
- F. Add Control Booth (100 NSF) from stage support to the CCTV Studio.
- G. The studio shall be 500 NSF and the control room shall be 275 NSF.
- H. Student Restroom has been added for flexibility purposes and enhancement of supervision of students.

**VII. PROGRAM FACILITIES LIST**

Design Codes	Spaces	Description	SREF Sq. Ft. Total	Proposed		Proposed	
				Sq. Ft. Per Unit	Sq. Ft. Total	Stu. Sta. Unit	Stu. Stat. Total.
<b>MEDIA CENTER</b>							
380	1	Reading Room/Stacks (to include Group Projects, Periodical Storage & Small Group Listening) (150 NSF from Tech Processing)	3,120		3,270		
382	1	Professional Library/Media Production/Copying Room			656		
383	1	AV Storage/Maintenance and Repair/CCTV Storage			660		
381	1	Library Media Specialist’s Office & Technical Processing (combined with Library Media Specialist’s office)(150 NSF to Reading/Stacks)			349		
385	1	CCTV Studio - Production and Control (100 NSF from Stage Control Booth)(500 NSF for Studio & 275 NSF for Control)	672		772		
821		Staff Restroom - M/F (out of allotment)					
814		Student Restroom - M/F (out of allotment)					
<b>TOTAL</b>					<b>5,707</b>		

Library Media Center

**VIII. PROGRAM FURNITURE AND EQUIPMENT**

**A. Reading Room**

No. of Items	Contractor Provided	District Provided (FF&E)	Description
1		X	Circulation desk with book drop
		X	Stacks/Shelving in Reading Room (refer to VIII.B.)
	X		Necessary backing for stacks/shelving at 2' and 5' around the perimeter of the reading room
1		X	Desk chair
1		X	Reference table, 30"W x 72"L
4		X	Book truck
1		X	Atlas stand, with shelves
1		X	Dictionary stand, portable
4		X	Automated library catalogue (workstations - 4)
1		X	Newspaper stand
3		X	Pencil sharpener, electric
1		X	Lounge furniture including sofas, chairs, tables to accommodate four to six people
10-20		X	Table, round or square, FACBC accessible
100-120		X	Chair, 18"
15		X	Public computer, all with computer tables, chairs, printer, no carrels
4		X	Access network computer, all with computer tables, chairs, printer, no carrels
1		X	Closed circuit TV security system
1		X	Amplifier system with microphone plugs
1		X	Mobile Multimedia cart
1	X		Water cooler; no electric eye drinking fountain
1	X		Recessed, built-in display cabinet (6'W x 4'H)
3	X		Tack Board, 4' x 8'
1	X		Video Format Screen with black masking borders, 12'w x 10'h, minimum size, wall or ceiling mounted after stacks are placed
1	X	X	Library detection & security system (refer to special considerations)
1		X	Radio frequency inventory system
1	X		Multimedia cabinet (refer to General Considerations)
1	X	X	LCD Projector
1	X	X	Sound Field Enhancement System
1	X		Clock
	X		Built-ins (refer to special considerations)



**B. Stack Area Shelving - District Provided**

To accommodate (9,700 volumes). Utilize 60"H shelving on perimeter, as much as possible. Freestanding shelving shall not exceed 42". All shelving shall be adjustable and have backing. Shelving shall be standardized so that inserts for periodical shelves can be moved. 775' lineal of 10" shelving for regular books, 225' lineal of 12" shelving for picture books, 200' lineal of 15" heavy duty shelving for reference books and 190' lineal of 12" shelving is required for kits. Readily usable bookends shall accompany shelving. Lightweight, plastic coated, wire shelving is not acceptable. Picture book shelving includes adjustable vertical supports.

**C. Library Media Specialist/Technical Processing**

No. of Items	Contractor Provided	District Provided (FF&E)	Description
1		X	Work station/chair
2		X	Guest chairs
1		X	Computer & printer - color
1		X	Technical processing workstation, automated library - media management server and workstation, printer, chair, secretarial
2		X	Computer for administration of automated circulation system with CDR
1		X	Bookcase
1		X	Binder, automatic
1-3		X	File cabinet, four-drawer, legal, lateral, lockable
2		X	Book truck, double-faced
4		X	Chair
4		X	Stapler, electric
1		X	Punch, 3 – hole, electric
1		X	Stapler, heavy-duty, long arm
1		X	Pencil sharpener, electric
1		X	Calculator
1	X		Computer table as part of built-in
1		X	Workstation with secretarial chair for clerk
1		X	TV for closed circuit TV security system
1	X		Single sink with goose neck faucet (HW/CW)
2	X		Tack board, 4' x 4'
1	X		Clock
	X		Built-ins (refer to special considerations)

**D. Professional Library (folded into Media Production)**

No. of Items	Contractor Provided	District Provided (FF&E)	Description
2		X	Lounge furniture - combination of chairs and tables to accommodate four people
8		X	Chair
1		X	Public access workstation, network access
1		X	Computer, printer, on-line access
	X		Built-ins (refer to special considerations)

**E. AV Storage/Maintenance Repair/CCTV Storage**

No. of Items	Contractor Provided	District Provided (FF&E)	Description
		X	Storage/Display rack system for hanging books in bags
4		X	27" data monitor/TV and AV input
1		X	DVD Player
4		X	VCR
4		X	54" carts with 8" wheels and locks
10		X	CD/cassette tape recorder
6		X	Language master
10		X	Jack box
48		X	Headset for jack box (10)
1		X	Overhead projector (traveling)
2		X	Overhead projector, with lamp changer, 4,000 lumens and cart
1		X	Slide projector
2		X	Portable sound system, with microphone and lectern
1		X	Opaque projector (optional)
3		X	Tripod screen, 60" x 60"
1		X	Laminator
1		X	Camcorder, with battery pack and charger
2		X	Tripod for camcorder
1		X	Projection unit, digital/video
1		X	35 mm camera, (inexpensive instamatic)
1		X	Digital camera with disk storage
1		X	Poster maker
1		X	Ellison or AccuCut machine (large and small letters)
1		X	Copy stand (optional)
1		X	Video projector
2		X	AV cart, 42"
2		X	AV cart, 37"
1		X	Scanner for computer
1		X	Color printer
1		X	Typewriter
1		X	Laptop computer with presentation stand
4		X	Computer workstation for automated circulation system
10		X	Computer for access to Internet with internal DVD
1		X	Presenter to attach computer to TV
1		X	SMART white board
2		X	TV/VCR combo for learning centers
2		X	Computer & printer for ITSA
	X		Built-ins (refer to special considerations)

**F. Closed - Circuit Television - (CCTV)**

No. of Items	Contractor Provided	District Provided (FF&E)	Description
2		X	Camcorder
2		X	VCR
1		X	VD Pro
1		X	Pro Audio Mixer

**DRAFT SCHEDULED FOR 04/19/06 BOARD MEETING**

<b>No. of Items</b>	<b>Contractor Provided</b>	<b>District Provided (FF&amp;E)</b>	<b>Description</b>
1		X	Handheld Microphone
1		X	Stand Adapter
1		X	Desk Mic Stands
2		X	Wired Lav Mics
1		X	Tripod with Head
1		X	Tripod with Head and Dolly
2		X	Monitor
1		X	Monitor/Receiver
1		X	Character Generator
1		X	Monitor
1		X	Applied Magic Editing Package
1		X	Intercom System
1		X	CD/Cassette
1		X	Player
1		X	Cables
1	X		Double Scrim Curtain Tract and curtain (refer to special considerations)
1	X		Clock (in control room)
	X		Built-ins (refer to special considerations)
	X		Pipe rail grid and lights for studio (refer to SDPBC ITV Dept for specifications)

**G. Media Production/Copy Room (folded into Professional Library)**

<b>No. of Items</b>	<b>Contractor Provided</b>	<b>District Provided (FF&amp;E)</b>	<b>Description</b>
1		X	Paper cutters, various sizes
1		X	Pencil sharpener, electric
3		X	Photocopier
1		X	Laminator
1		X	Public access workstation
1		X	Computer, printer, flat bed scanner, and color printer
1	X		Single sink with goose neck faucet (CW/HW)
3	X		Tack board, 4' x 4'
1	X		8'w x 6'h video format screen with black masking borders
1	X		Clock
	X		Built-ins (refer to special considerations)

**H. Group Projects (folded into Reading/Stacks)**

<b>No. of Items</b>	<b>Contractor Provided</b>	<b>District Provided (FF&amp;E)</b>	<b>Description</b>
22		X	Computer workstation with wire management and chairs
2		X	Computer workstation with wire management and chairs, F.A.C.B.C. Accessible
24		X	Computers
2		X	Printers

Library Media Center

**IX. SPECIAL CONSIDERATIONS - CONTRACTOR PROVIDED**

Refer to **GENERAL CONSIDERATIONS, GENERAL SECURITY CONSIDERATIONS AND TRAFFIC CONTROL**

- A. **Heating/Cooling/Ventilation** – As required to meet District Standards.
- B. **Acoustical** - As required to meet District Standards. TV production studio and control room shall be soundproof.
- C. **Floor** - As required to meet District Standards.
- D. **Walls** - As required to meet District Standards. **Provide a cyclorama wall in the CCTV Studio (opposite wall of control room); there shall be no visible lines, and the wall shall be smooth and painted chroma key blue or green.**
- E. **Ceiling** - As required to meet District Standards. Install double curtain track and curtains (no white) around one-half of production studio, opposite control room, ceiling mounted, at least 14" from walls. The ceiling in the studio shall be a minimum of 14' (12' AFF to bottom of pipe rail grid/lights).
- F. **Lighting** - As required to meet District Standards. Color-balanced fluorescent lighting with capability of separate switching of rows and lights evenly distributed to all areas of the reading room. Area shall have a master control switch with separate switches in each area including studio and control room. Dimmer switches in Reading/Stacks area for presentations. Lights above outside doors to conference rooms, and TV production room to alert visitors that rooms are "in use". Row lighting for studio ceiling. Mounted raked theatrical lighting with dimming control of individual fixtures for studio ceiling with adequate ceiling height for ceiling mounted lights. Provide task lighting above counter in control room.
- G. **Windows** - As required to meet District Standards. Provide observation windows from library media specialist's office to reading room and circulation desk. Provide windows, where necessary, for supervision; windows shall be low enough for visibility when seated. Provide **angled window** (refer to Design Criteria) to minimize reflection between CCTV control room and production studio; window in control room shall be no less than 34" high above the floor and no less than 36" wide. No windows in storage room.
- H. **Doors** - As required to meet District Standards. Provide a half glass door from CCTV control room to production studio and a solid door from reading room. Doors shall be installed to allow physical access from the control room to all rooms in the CCTV suite. Provide double, exterior doors for loading purposes. Interior doors shall be half glass, where appropriate.
- I. **Plumbing Fixtures / Water** – As required to meet District Standards.

- J. Communications** - As required to meet District Standards
1. Intercom from central administration to all areas except CCTV studio. Optional block-out for intercom in reading/stacks room.
  2. Intercom to CCTV control room and reading room shall have a lockout feature with emergency override.
  3. Telephone jacks at the circulation desk, in library media specialist's offices, technical processing room, TV control room, professional library media production room, and conference room(s). CCTV room shall have phone; provide network wiring for intra and inter network communications.
  4. Independent low-power sound system located in reading room.
  5. Voice data, network communication and ITV reception in the following areas: circulation desk, director's office, professional library, AV storage, CCTV control room, media production and throughout the reading room where computer stations will be located.
  6. Voice data and network lines require built-in surge protection.
  7. ITV broadcast capability from technical processing room, reading room, CCTV control room, cafeteria, principal's office, main sporting field and courtyards.
  8. Provide physical and intellectual access to information in native languages.
- K. Electrical** - As required to meet District Standards. **Do not** locate wall outlets behind or above stacks. Locate necessary data and electrical outlets along columns for computers. Provide wiring and outlets for 30 computer stations in group projects (folded into reading room) and for automated library catalogue throughout media center where specified. Provide a strip outlet above work counter in technical processing, media production laboratory, and CCTV control room. An additional "on/off" switch for the studio lights shall be installed in the control room. Install two independent circuits with three double electrical outlets on each circuit in the control room and studio. ITV outlets shall be available on at least two opposing walls of the main studio. Provide wiring for library book detection system, security cameras system and automated circulation procedures. Do not locate outlets on cyclorama wall in the CCTV Studio.
- L. Instructional Technology** – As required to meet District Standards. Provide electrical and data in the Reading Room/Stacks near the projection screen for multimedia equipment.
- M. Gas and Air** - As required to meet District Standards

- N. **Safety** - As required to meet District Standards.
- O. **Fencing** - As required to meet District Standards.
- P. **Service Drives** - As required to meet District Standards.
- Q. **Parking** - As required to meet District Standards. Provide parking near library media center for after hours community use.
- R. **Built-ins** - Cabinetry shall have locks.
  - 1. **Technical Processing (folded into Library Specialist's office)**
    - a. Provide base cabinet with doors, along entire length of long wall, with stainless steel sink, cabinets with drawers of various depths and open shelves above.
    - b. Provide shelving for up to (200) books.
    - c. Provide six drawers, 30"W, for poster storage.
    - d. Counter no less than 30"D.
    - e. Provide adjustable shelving, 18"D.
  - 2. **Professional Library**
    - a. Provide base cabinet, on one wall, with shelving above.
    - b. Provide counter for computers (4) and printer (2) with grommets for wire management.
  - 3. **AV Storage/Maintenance Repair**
    - a. Provide base cabinet with doors, front disabled accessible with stainless steel sink and cabinets above with doors, lockable.
    - b. Provide adjustable metal AV shelving, covering approximately 50% of room.
    - c. Provide pegboard, 4"H x 8"L, on one wall.
  - 4. **CCTV Production**
    - a. Request CCTV information from the SDPBC Department of Program Management and ITV.

**DRAFT SCHEDULED FOR 04/19/06 BOARD MEETING**

- (1) Provide double scrim, curtain tract around one-half of production studio, opposite control room, ceiling mounted, at least 14" from walls.
- (2) Provide pipe rail grid for production studio lighting; room lighting.
- (3) CCTV Control Room
  - (a) Provide base cabinet, 26"H, on wall, facing production studio, with plug molding, at 28" above finished floor. No cabinets shall be installed in the control room that will impede comfortable seating at the control panel. If space is limited, it is preferable to have no cabinets at all in the control room.
  - (b) Opposite wall, provide open base cabinets, with one adjustable shelf, work surface counter top and open shelving above.
  - (c) Provide pegboard, on full wall, opposite door.
  - (d) Provide and install two PVC conduit openings, 4" in diameter, at floor level, between production studio and control room to allow pass through for cables.
  - (e) Provide shelves above counter for video/cd storage

5. **Media Production and Copy Room**

- a. Provide base cabinet with doors, on the long wall, with open shelves above, containing single, stainless steel, sink.
- b. Work counter, 29", above finished floor, for computers and printer, along one wall with grommets for wire management.
- c. Provide island base cabinet, 34"h, with electrical outlets at both ends and center, and open for large paper and board storage, in center of room.
- d. Provide paper storage cabinet, adjacent to large copier. Copier shall be located so it can be pulled away from wall for servicing.

6. **Library Media Specialist's Office**

- a. Provide wall of base cabinets with doors, with open shelving above.

Library Media Center

7. **Reading/Stacks**

- a. Provide Multimedia cabinet – refer to General Considerations.

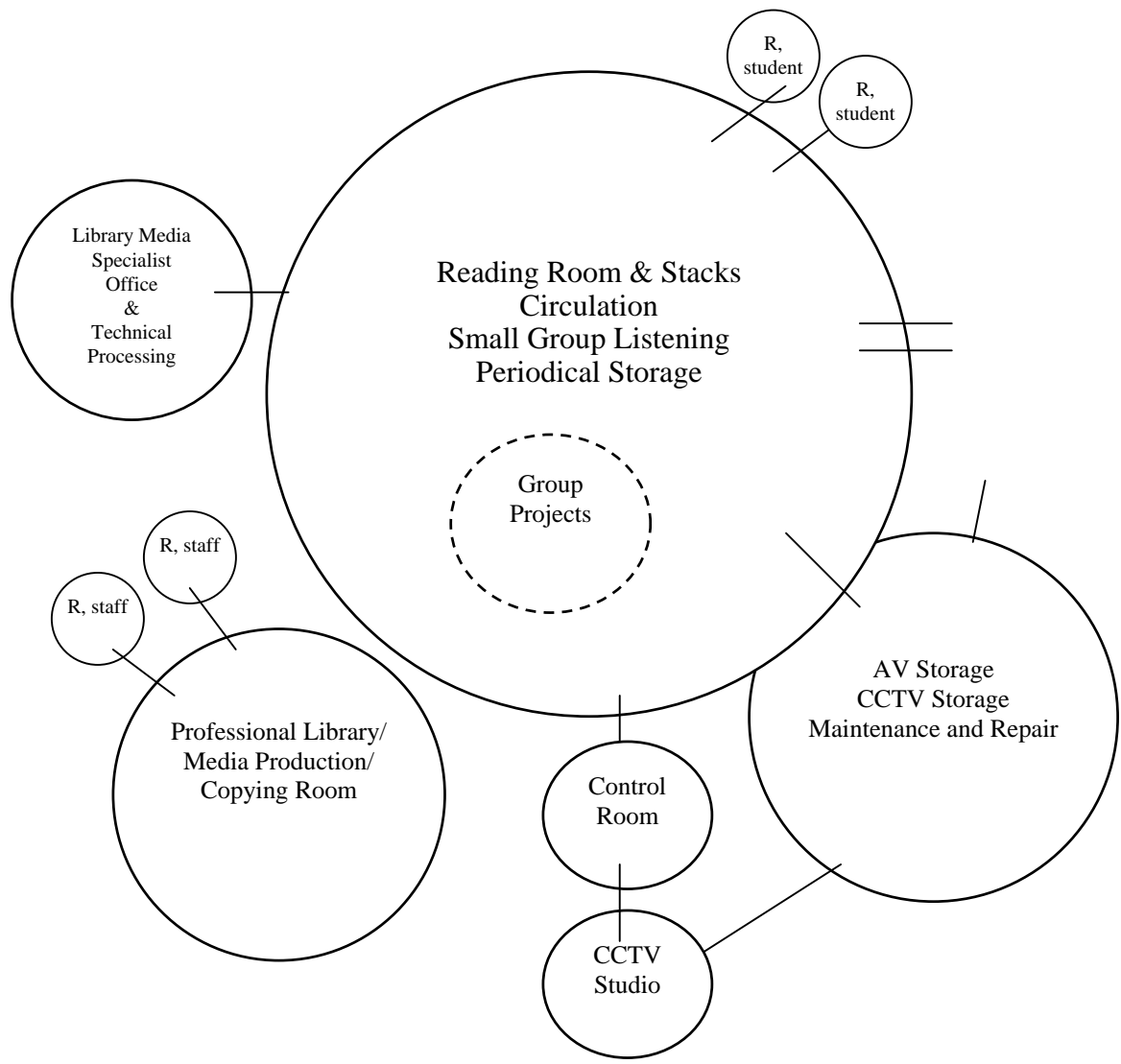
**S. Other Considerations**

1. Design CCTV production studio and control room, so noise will not transmit from lavatory facilities, common halls, placement of HVAC, or plumbing pipes. Air handlers should not be located in the vicinity of the studio to avoid excess ambient noise and, if the studio is on a second floor, vibration from a handler located under the studio or nearby will result in a “jiggling” motion on the cameras. No PA’s shall be installed on control room or studio walls.
2. An independent, low-power, sound system shall be provided for the reading room. The amplifier shall be placed in the vicinity of the circulation desk, with speakers located, throughout, for even sound distribution.
3. Adjacent to library media center entrance, provide built-in display case, lockable storage base, safety glass.
4. Circulation desk shall be located near entrance with visibility to entire reading room.
5. Walking area in CCTV control room shall be at least 5' wide from wall to counter.
6. **Architect shall contact TEN to determine the design and equipment for CCTV studio.**
7. Provide electric, data and phone in CCTV storage for ITSA.



SPATIAL RELATIONSHIPS

Library Media Center



R = Restroom

Library Media Center

**MUSIC**

**I. PROGRAM PHILOSOPHY**

Refer to overall. (Page 1)

**II. PROGRAM GOALS**

The elementary school music program is planned to provide opportunities for children to participate in many different types of musical activities such as singing, dancing (movement) and playing of instruments through which they can discover their musical interests and develop their potentialities.

**III. PROGRAM ACTIVITIES**

Staff activities will include small and large group instruction in rhythmic activities, music reading skills, music listening skills in appreciation and interpretation, and units of student endeavors in vocal and instrumental activities.

Student activities will include small and large group involvement in listening to music for appreciation and interpretation; vocal and instrumental participation in creating music; and the composition of contemporary and traditional music.

**IV. ORGANIZATIONAL NOMENCLATURE**

Teacher - Student Ratio: varies

Grade Levels for Which Program is Intended: K-5

**V. INNOVATIONS, EXPERIMENTAL IDEAS, OTHER PLANNED USES**

A. This facility is planned for the music room and for special activities during the elementary school day and for community activities after the regular school day.

**VI. JUSTIFICATION FOR VARIANCE FROM SREF REQUIREMENTS**

A. Restroom has been added for flexibility purposes and enhancement of supervision of students.

B. The music classroom shall include an area for electric keyboard laboratory.

C. Music classroom square footage has been increased to accommodate program needs.

**VII. PROGRAM FACILITIES LIST**

Design Codes	Spaces	Description	SREF Sq. Ft. Total	Proposed		Proposed	
				Sq. Ft. Per Unit	Sq. Ft. Total	Stu. Sta. Unit	Stu. Stat. Total.
<b>MUSIC</b>							
055	1	Music Classroom			1,200		
808	1	Material Storage/Reference Room			200		
814	1	Student Restroom - M/F			45		
<b>TOTAL</b>					<b>1,445</b>		

**VIII. PROGRAM FURNITURE AND EQUIPMENT**

**A. Music Laboratory**

No. of Items	Contractor Provided	District Provided (FF&E)	Description
1		X	File cabinet, four-drawer, legal, lateral, lockable
1		X	Teacher Computer & Printer
2		X	Chair
1		X	Bookcase, adjustable, 10"D shelving
1		X	Stereo/record player, with head set (10)
1		X	Stereo/cassette recorder / player
1		X	Piano
30-40		X	Chair, stackable
5		X	Choral risers, portable
4		X	Computer
2		X	Printer
1	X		Single sink with goose neck faucet (CW)
2	X		Marker Board, 4' x 8', with map rails and flag holder.
2	X		Marker Board, 4' x 8', with staff lines
4	X		Tack Board, 4' x 4
1	X		8'w x 6'h video format screen with black masking borders
1		X	Pencil sharpener, electric
1	X		Clock
1	X	X	Sound system (refer to special considerations)
1	X		Speakers built into classrooms that can be utilized with or without recording room equipment (refer to special considerations)
1	X		Multimedia cabinet (refer to General Considerations)
1	X		Workstation (refer to General Considerations)
1		X	Document camera
1		X	DVD/VCR Combo
1		X	Wireless Laptop cart
1	X	X	LCD Projector
1	X	X	Sound Field Enhancement System
30		X	Keyboard, electric
	X		Built-ins (refer to special considerations)

Music

A variety of musical and rhythm instruments will be designated when school is constructed.

**IX. SPECIAL CONSIDERATIONS - CONTRACTOR PROVIDED**

Refer to **GENERAL CONSIDERATIONS, GENERAL SECURITY CONSIDERATIONS AND TRAFFIC CONTROL.**

- A. **Heating/Cooling/Ventilation** – As required to meet District Standards.
- B. **Acoustical** - As required to meet District Standards. Special consideration shall be given for better sound control.
- C. **Floor** - As required to meet District Standards.
- D. **Walls** - As required to meet District Standards. Provide one wall in practice room with mirrors.
- E. **Ceiling** - As required to meet District Standards. Special consideration shall be given for better sound control.
- F. **Lighting** - As required to meet District Standards.
- G. **Windows** - As required to meet District Standards. Provide view windows into classrooms and practice areas.
- H. **Doors** - As required to meet District Standards.
- I. **Plumbing Fixtures/Water** - As required to meet District Standards.
- J. **Communications** - As required to meet District Standards.
- K. **Electrical** - As required to meet District Standards. The contractor shall provide surround system wiring, speakers, base, subwoofer, etc. for laboratory. The District shall provide the musical equipment, stereo, recorder, CD player, etc.
- L. **Instructional Technology** - As required to meet District Standards.
- M. **Gas and Air** - As required to meet District Standards.
- N. **Safety** - As required to meet District Standards.
- O. **Fencing** - As required to meet District Standards.
- P. **Service Drives** - As required to meet District Standards.
- Q. **Parking** - As required to meet District Standards.

**R. Built-ins** - Cabinetry shall have locks.

1. **Laboratory**

- a. Provide cabinet with doors (2), 6'L x 24"D, floor-to-ceiling with adjustable shelving.
- b. Provide base cabinet with doors and adjustable shelves with sink, minimum, 5'L, adjustable shelves and book / record storage, above cabinet with doors and adjustable shelves.
- c. Provide computer counter to accommodate four (4) computers and two (2) printers (14'W x 30"D). The counter shall have grommets for wire management
- d. Provide Multimedia cabinet and workstation - refer to General Considerations.

2. **Material Storage/Reference**– Provide shelving for storage of musical instruments to store instruments of various sizes, i.e., flute, drums. Provide base cabinet with doors and adjustable shelves, lockable, minimum 5' L, open shelving above. Provide electric, data and phone in material storage/reference.

3. **Built-in Instructional Aids**

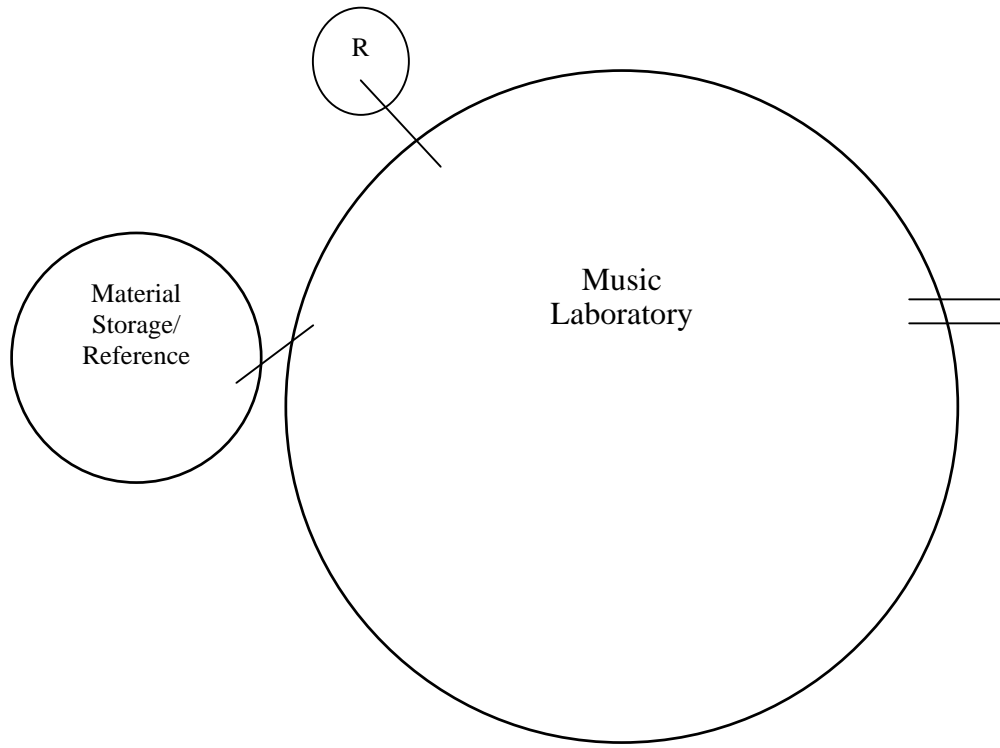
- a. Provide space for acoustically treated, study module (2), created by folding and separator walls.

4. **School Display/Exhibition** - Provide recessed display cabinet (6'W x 4'H) in hallway near music room.

**S. Other Considerations** – Versatility is essential to a music facility.

**SPATIAL RELATIONSHIPS**

**Music**



R = Restroom

Music

**PHYSICAL EDUCATION**

**I. PROGRAM PHILOSOPHY**

Refer to overall. (Page 1)

**II. PROGRAM GOALS**

- A. Optimum fitness development.
- B. Physical competence in skills performance.
- C. Acceptable social behavior, emotional stability and self-control.
- D. Acquisition of activities for lifelong fitness.
- E. Awareness of safety concepts and application in the environment.
- F. Knowledge of the benefits of regular and systematic exercise; game rules; activity organization; ethnic and cultural activities; equipment and equipment quality, care and use.
- G. Develop own fitness program.

**III. PROGRAM ACTIVITIES**

- A. Fitness components.
- B. Fundamental motor skills (includes movement exploration and expression).
- C. Ball-handling skills.
- D. Rhythms and dance activities.
- E. Educational gymnastics (includes body mechanics, posture, self-testing activities).
- F. Critical thinking skills

**IV. ORGANIZATIONAL NOMENCLATURE**

Teacher - Student Ratio: varies

Grade Levels for Which Program is Intended: K-5

**V. INNOVATIONS, EXPERIMENTAL IDEAS, OTHER PLANNED USES**

N/A

**VI. JUSTIFICATION FOR VARIANCE FROM SREF REQUIREMENTS**

- A. Teacher Planning shall be located with P.E. Storage at the covered play area.
- B. Restrooms, student and staff, shall be located at the covered play area.

**VII. PROGRAM FACILITIES LIST**

Design Codes	Spaces	Description	SREF Sq. Ft. Total	Proposed		Proposed	
				Sq. Ft. Per Unit	Sq. Ft. Total	Stu. Sta. Unit	Stu. Stat. Total.
<b>PHYSICAL EDUCATION</b>							
014	1	Covered Play Area			3,000		
013	1	PE Storage			315		
315	1	Teacher Planning			100		
821		Staff Restroom - M/F (from allotment)					
815/816		Student Restroom - M/F (out of allotment)					
<b>TOTAL</b>					<b>3,415</b>		<b>0</b>

**VIII. PROGRAM FURNITURE AND EQUIPMENT**

**A. P.E. Storage**

No. of Items	Contractor Provided	District Provided (FF&E)	Description
4		X	Tumbling mat, 4' x 6', Primary
4		X	Tumbling mat, 4' x 6', Intermediate
1		X	Mat truck, Primary
1		X	Mat truck, Intermediate
2		X	Balance beam (low), Primary
2		X	Balance beam (low), Intermediate
1		X	Teaching Cart
1		X	Skills Equipment
1		X	Portable Dry Erase Board
1		X	Wireless microphone with portable amplifier
1		X	Portable cart with TV and VCR
	X		Built-ins (refer to special considerations)

A variety of physical education equipment items and instructional materials will be designated when school is constructed.

**B. Teacher Planning**

No. of Items	Contractor Provided	District Provided (FF&E)	Description
1		X	Teacher Desk and Chair
1		X	File cabinet, four-drawer, legal, lateral, lockable
1		X	Teacher Computer & Printer
1	X		Tack Board, 3' x 4'
1	X		Clock
	X		Built-ins (refer to special considerations)

Physical Education



**C. Outdoor Play Equipment**

No. of Items	Contractor Provided	District Provided (FF&E)	Description
1	X		K-2 Playground Equipment (refer to Special Considerations)
1	X		3-5 Playground Equipment (refer to Special Considerations)
	X		Volleyball, tennis & basket nets and standards

**IX. SPECIAL CONSIDERATIONS - CONTRACTOR PROVIDED**

Refer to **GENERAL CONSIDERATIONS, GENERAL SECURITY CONSIDERATIONS AND TRAFFIC CONTROL.**

- A. **Heating/Cooling/Ventilation** – As required to meet District Standards.
- B. **Acoustical** - As required to meet District Standards.
- C. **Floor** - As required to meet District Standards.
- D. **Walls** - As required to meet District Standards.
- E. **Ceiling** - As required to meet District Standards. Covered play area, 14'-20'h, clear with no sharp objects in ceiling.
- F. **Lighting** - As required to meet District Standards.
- G. **Windows** - As required to meet District Standards. Provide window, in teacher planning, to overlook playground. Windows shall be low enough for visibility when seated. No window in equipment storage.
- H. **Doors** - As required to meet District Standards. Provide pair of doors, no mullion, to accommodate equipment and carts in PE storage.
- I. **Plumbing Fixtures/Water** - As required to meet District Standards. Drinking fountain shall be located at play courts, fields and covered play area; no electric eye drinking fountain.
- J. **Communications** – As required to meet District Standards.
- K. **Electrical** - As required to meet District Standards. Provide electrical outlets in the covered play area.
- L. **Instructional Technology** - As required to meet District Standards.
- M. **Gas and Air** - As required to meet District Standards.
- N. **Safety** - As required to meet District Standards.

Physical Education

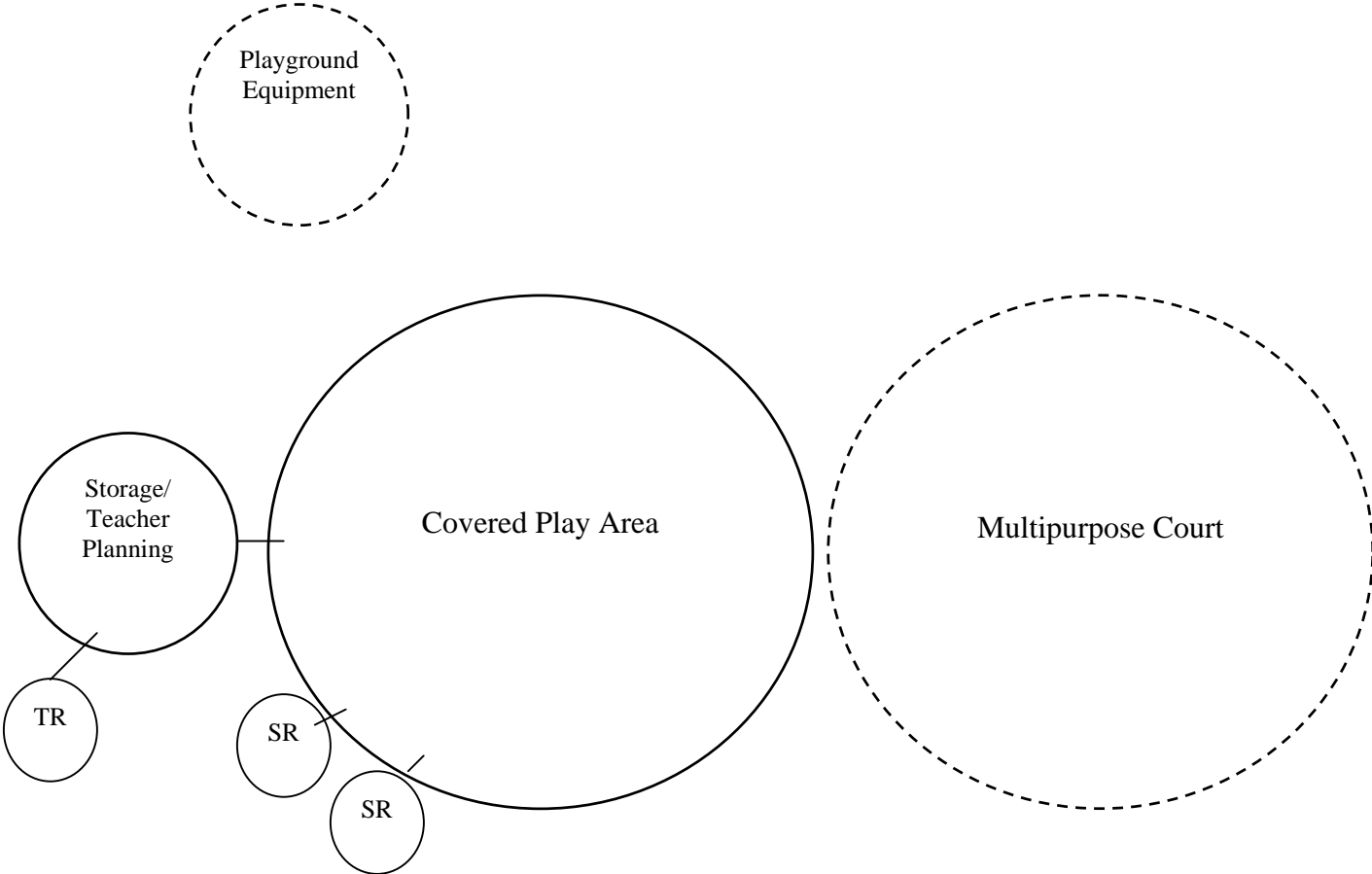
- O. Fencing** - As required to meet District Standards. Provide a 6' fence around the perimeter of the play courts, fields and covered play area. Separate from the fence around the school building. Provide fence around kindergarten play area.
- P. Service Drives** - As required to meet District Standards.
- Q. Parking** - As required to meet District Standards. Locate play courts and fields near parking.
- R. Built-ins** -
1. **Teacher Planning** - Provide base cabinet with doors and adjustable shelves, lockable, minimum 5' L, open shelving above.
  2. **Storage Area**
    - a. Provide cabinets (2), floor-to-ceiling, lockable (one key), adjustable shelving on opposite walls, 36"D. Shelves to hold up to 200 lbs.
    - b. Provide hooks to hang equipment: jump ropes and hurdles, up to 100 lbs.
    - c. Provide metal, adjustable shelves, with rim on open edges, to keep balls from rolling out.
- S. Other Considerations**
1. One, all-purpose, hard surface (asphalt with playcourt coating), playing area, with appropriate court markings for other games including volleyball and basketball with 8' goals and 10' goals. All courts shall have proper drainage. Sleeves shall be installed in the court with covers for placement of volleyball standards. Refer to manual, Elementary School Playcourts, provided by the SDPBC Department of Program Management.
  2. Provide one softball field with backstop. Softball field shall have home plates, back-to-back. Softball field shall have a bahia grass outfield and infield.
  3. Provide one open field/soccer field with bahia grass.
  4. Water and restrooms shall be easily accessible to play courts and fields; no electric eye drinking fountain.
  5. Court and play areas shall not be located adjacent to noise generating air-conditioning units.

**DRAFT SCHEDULED FOR 04/19/06 BOARD MEETING**

6. Provide playground equipment for Grades K-2 and Grades 3-5 with poured in place rubberized surface for all schools. Schools going under modernization shall have the playground equipment evaluated and replaced as needed. Playground equipment and poured in place must meet FACBC, SDPBC Risk Management, SDPBC Maintenance Plant Operations and SDPBC Building Department standards.
7. Playground equipment shall be located away from covered play area and all-purpose court.
8. Contractor shall provide all volleyball nets, tennis nets, basketball nets, etc. and standards.

**SPATIAL RELATIONSHIPS**

**Physical Education**



TR = Teacher Restroom  
SR = Student Restroom

Contractor to provide playground equipment (fenced separately)

Physical Education

**RESOURCE ROOM**

**I. PROGRAM PHILOSOPHY**

All students are entitled to receive appropriate educational services designed to achieve two major objectives: (1) the development of skills and competencies common to all citizens (2) the development of skills and competencies unique to the students' individual potentialities.

**II. PROGRAM GOALS**

Students will be provided educational programs designed to meet their individual needs.

**III. PROGRAM ACTIVITIES**

Instruction will be provided in academic and enrichment curriculum areas.

**IV. ORGANIZATIONAL NOMENCLATURE**

Teacher - Student Ratio: 1:15

Grade Levels for Which Program is Intended: K - 5

**V. INNOVATIONS, EXPERIMENTAL IDEAS, OTHER PLANNED USES - N/A**

**VI. JUSTIFICATION FOR VARIANCE FROM SREF REQUIREMENTS - N/A**

- A. Material storage shall be folded into the classroom space.
- B. Two Resource Rooms shall be adjacent with easy access to driveway and drop-off.
- C. Restrooms have been added to resource rooms for flexibility purposes and enhancement of supervision of students.
- D. Combine two (2) resource rooms into one (1) room with two (2) doors and two (2) FISH room numbers.

**VII. PROGRAM FACILITIES LIST**

Design Codes	Spaces	Description	SREF Sq. Ft. Total	Proposed		Proposed	
				Sq. Ft. Per Unit	Sq. Ft. Total	Stu. Sta. Unit	Stu. Stat. Total.
<b>RESOURCE</b>							
040	4	Resource Room with storage folded into room		390	1,560		
815/816	4	Student Restrooms (out of allotment)					
		<b>TOTAL</b>			<b>1,560</b>		<b>0</b>

Resource Room

**VIII. PROGRAM FURNITURE AND EQUIPMENT**

**A. Resource Room**

No. of Items	Contractor Provided	District Provided (FF&E)	Description
15		X	Student desk & chair, adjustable
2-4		X	Computer table
1		X	Teacher Computer & Printer
1		X	Table, 30"W x 72"L
6		X	Chairs, stackable
1		X	File cabinet, four-drawer, legal, lateral, lockable
4		X	Computer
2		X	Printer
1		X	Bookcase
1	X		Teacher storage cabinet, 36"W x 30"D x 72"H, with adjustable shelving, lockable
2	X		Marker Board, 4' x 8', with map rail and flag holder
4	X		Tack Board, 4' x 4'
1	X		8'w x 6'h video format screen with black masking borders
1	X		Single stainless steel sink with goose neck faucet (CW) and water jet drinking fountain accessible to disabled; no electric eye drinking fountain
1		X	Pencil sharpener, electric
1	X		Clock
1	X		Multimedia cabinet (refer to General Considerations)
1	X		Workstation (refer to General Considerations)
1		X	Document camera
1		X	DVD/VCR Combo
1		X	Wireless Laptop cart
1	X	X	LCD Projector
1	X	X	Sound Field Enhancement System
	X		Built-ins (refer to special considerations)

**IX. SPECIAL CONSIDERATIONS - CONTRACTOR PROVIDED**

Refer to **GENERAL CONSIDERATIONS, GENERAL SECURITY CONSIDERATIONS AND TRAFFIC CONTROL.**

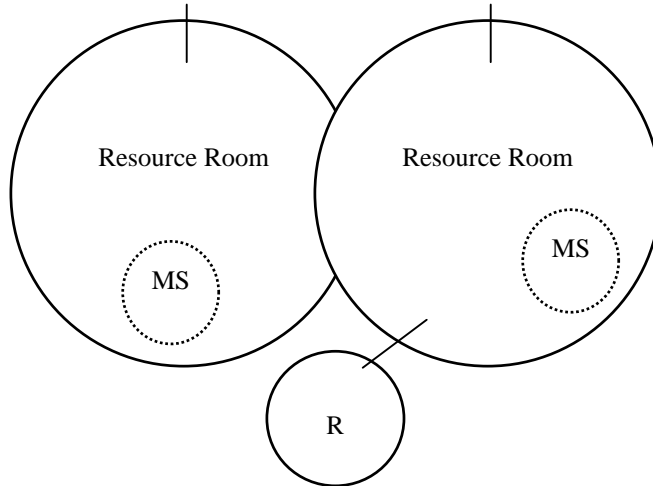
- A. Heating/Cooling/Ventilation** - As required to meet District Standards.
- B. Acoustical** - As required to meet District Standards.
- C. Floor** - As required to meet District Standards.
- D. Walls** - As required to meet District Standards.
- E. Ceiling** - As required to meet District Standards.
- F. Lighting** - As required to meet District Standards.

Resource Room

- G. **Windows** - As required to meet District Standards.
- H. **Doors** - As required to meet District Standards.
- I. **Plumbing Fixtures/Water** - As required to meet District Standards.
- J. **Communications** - As required to meet District Standards.
- K. **Electrical** - As required to meet District Standards.
- L. **Instructional Technology** - As required to meet District Standards.
- M. **Gas and Air** - As required to meet District Standards.
- N. **Safety** - As required to meet District Standards.
- O. **Fencing** - As required to meet District Standards.
- P. **Service Drives** - As required to meet District Standards.
- Q. **Parking** - As required to meet District Standards.
- R. **Built-ins** -
  - 1. Provide base cabinet with sink and lockable doors and adjustable shelves and upper cabinets with lockable doors and adjustable shelves.
  - 3. Provide Multimedia cabinet and workstation - refer to General Considerations.
- S. **Other Considerations:** N/A

## SPATIAL RELATIONSHIPS

### Resource Room



Combine 2 resource rooms into 1 with 2 doors and  
2 FISH room numbers

R – Restroom  
MS – Material Storage  
Not all spaces are shown

Resource Room



**RESTROOMS**

Provide public restrooms in administration. Provide restrooms for kitchen staff in kitchen. Provide restrooms for faculty and staff immediately adjacent to staff dining, general teacher planning areas, physical education teacher planning and other areas per code. Provide student restrooms in classrooms, dining rooms, covered play area and other areas per code. Provide restroom in clinic per Board approved prototype. Provide ceramic tile in toilets, floor to ceiling, with floor drains. Refer to **GENERAL CONSIDERATIONS**.

Design Codes	Spaces	Description	SREF Sq. Ft. Total	Proposed		Proposed	
				Sq. Ft. Per Unit	Sq. Ft. Total	Stu. Sta. Unit	Stu. Stat. Total.
<b>RESTROOMS</b> (adjust square footage for FACBC and parity requirements)							
822/823		Public Restrooms			178		
815/816		Student Restrooms (Grades 4 and above)			1,334		
819/820		Staff Restrooms			356		
		<b>TOTAL</b>			<b>1,867</b>		

**STAGE/SUPPORT**

**I. PROGRAM PHILOSOPHY**

Refer to overall. (Page 1)

**II. PROGRAM GOALS**

Stage / support spaces are to provide facilities in support of instructional programs, and to encourage out-of-class use by students and staff.

New trends in teaching methods and new awareness of the school, as a community center, make stage / support essential auxiliary teaching and community activities spaces for the elementary school.

With a growing concern to utilize large rooms for multiple purposes, the dining room will be served by stage / support facilities.

The architect is encouraged to explore planning alternatives for stage / support spaces as related to the dining hall for most effective utilization.

**III. PROGRAM ACTIVITIES**

The stage / support areas will provide the following:

- A. A convenient setting for presentations to large group assemblies for a variety of purposes - instruction, meetings, displays, etc.
- B. A facility for teaching participation in, and appreciation of, the performing arts.

**IV. ORGANIZATIONAL NOMENCLATURE**

Grade Levels for Which Program is Intended: K-5

**V. INNOVATIONS, EXPERIMENTAL IDEAS, OTHER PLANNED USES**

The project architect is encouraged to study stage design alternatives, which permit use of stage area for overflow dining room seating, for example, portable platforms. In addition, special lighting and sound equipment shall be considered.

**VI. JUSTIFICATION FOR VARIANCE FROM SREF REQUIREMENTS**

- A. The two dressing rooms shall be combined into one space.

Stage/Support

**DRAFT SCHEDULED FOR 04/19/06 BOARD MEETING**

- B. Provide outside stage approximately 800 NSF with access from indoor stage, where possible.
- C. 100 NSF from Control Booth to CCTV Control Room and Studio.

**VII. PROGRAM FACILITIES LIST**

Design Codes	Spaces	Description	SREF Sq. Ft. Total	Proposed		Proposed	
				Sq. Ft. Per Unit	Sq. Ft. Total	Stu. Sta. Unit	Stu. Stat. Total.
<b>STAGE</b>							
363	1	Indoor Stage		990	990		
364	1	Stage Storage			480		
317	2	Dressing Room (folded into one space)		240	480		
	1	Control Booth (to CCTV Studio-Production)	100		0		
		<b>TOTAL</b>			<b>1,950</b>		<b>0</b>

**VIII. PROGRAM FURNITURE AND EQUIPMENT**

**A. Stage**

No. of Items	Contractor Provided	District Provided (FF&E)	Description
1	X		Microphone jack for stage in floor and overhead
1	X		Stage curtains
1	X		Sound system (shall work with LCD projector and other technology)
1	X	X	LCD Projector
1	X		12'w x 10'h, minimum, video format screen with black masking borders and electronically operated
1	X		Multimedia cabinet (refer to General Consideration)
	X		Built-ins (refer to special considerations)

**B. Dressing Room/Office**

No. of Items	Contractor Provided	District Provided (FF&E)	Description
1		X	Desk/workstation with chair
2		X	Side arm chair
1		X	File Cabinet, four drawer, legal, lateral & lockable
1		X	Computer & Printer
1		X	Bookcase
1	X		Tack board, 3' x 4'
1	X		Clock
1	X		Under counter refrigerator
	X		Built-ins (refer to special considerations)

Stage/Support

C. **Stage Storage**

No. of Items	Contractor Provided	District Provided (FF&E)	Description
	X		Built-ins (refer to special considerations)

IX. **SPECIAL CONSIDERATIONS - CONTRACTOR PROVIDED**

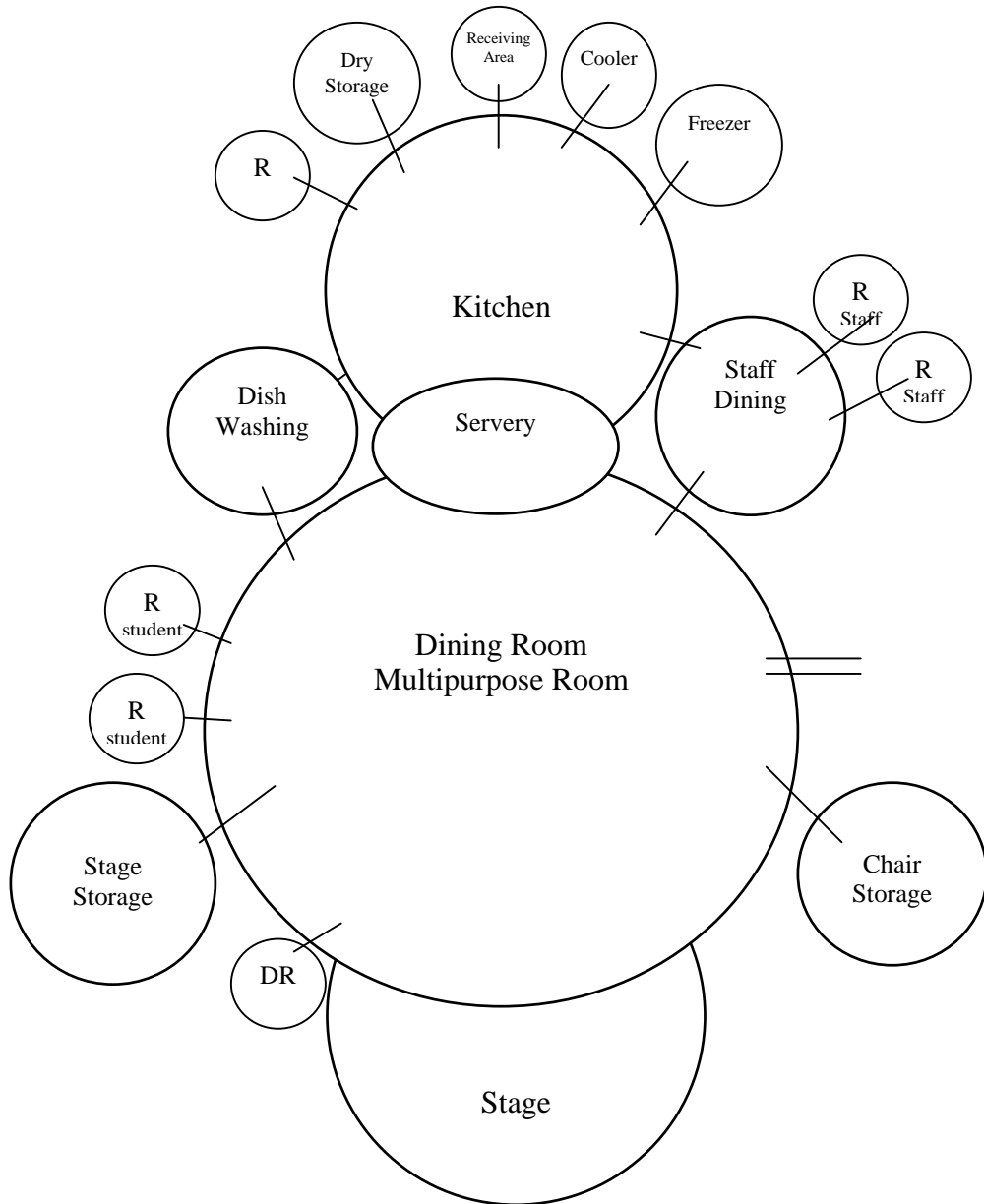
Refer to **GENERAL CONSIDERATIONS, GENERAL SECURITY CONSIDERATION AND TRAFFIC CONTROL.**

- A. **Heating/Cooling/Ventilation** - As required to meet District Standards.
- B. **Acoustical** - As required to meet District Standards.
- C. **Floor** - As required to meet District Standards.
- D. **Walls** - As required to meet District Standards.
- E. **Ceiling** - As required to meet District Standards. Provide pipe gridirons and curtains, including drops and panels.
- F. **Lighting** - As required to meet District Standards. Incandescent ceiling lights, with individual control, shall be provided. Stage lights shall be equipped with dimmer switches. .
- G. **Windows** - As required to meet District Standards.
- H. **Doors** - As required to meet District Standards. Provide access from indoor stage to outside stage.
- I. **Plumbing Fixtures/Water** - As required to meet District Standards.
- J. **Communications** - As required to meet District Standards. Sound panel to house equipment. Provide access to Closed-Circuit TV. ITV broadcast capability from stage and dining room. Provide microphone outlets on stage.
- K. **Electrical** - As required to meet District Standards.
- L. **Instructional Technology** – As required to meet District Standards.
- M. **Gas and Air** - As required to meet District Standards
- N. **Safety** - As required to meet District Standards.
- O. **Fencing** - As required to meet District Standards.

Stage/Support

- P. Service Drives** - As required to meet District Standards.
- Q. Parking** - As required to meet District Standards.
- R. Built-ins** -
1. **Stage Storage** – Provide metal adjustable shelving, one wall, 12"D, floor to ceiling.
  2. **Dressing Room/Office** – Provide base cabinets and upper cabinets, both with doors, lockable and adjustable shelves.
  3. Provide Multimedia cabinet – refer to General Considerations.
- S. Other Considerations** –
1. Electric, data and microphone jack should be located near the front of the stage.

**SPATIAL RELATIONSHIPS**  
**Food Services, Multipurpose Room & Stage**



R = Restroom  
DR = Dressing Room/Office

Stage/Support

**TEACHER PLANNING**

**I. PROGRAM PHILOSOPHY**

Refer to overall. (Page 1)

**II. PROGRAM GOALS**

The goal is to provide teachers and staff with a comfortable and restful environment in which to mentally and physically relax during non-duty periods.

**III. PROGRAM ACTIVITIES**

The teacher planning areas shall provide spaces for the social and emotional development of teachers and staff. It also provides the opportunity for small group meetings and planning.

**IV. ORGANIZATIONAL NOMENCLATURE**

During the course of the day staff members will use the facilities. The number of people, at any one time, will vary.

**V. INNOVATIONS, EXPERIMENTAL IDEAS, OTHER PLANNED USES - N/A**

**VI. JUSTIFICATION FOR VARIANCE FROM SREF REQUIREMENTS**

A. Teacher Planning area shall be located at the covered play area.

**VII. PROGRAM FACILITIES LIST**

Design Codes	Spaces	Description	SREF Sq. Ft. Total	Proposed		Proposed	
				Sq. Ft. Per Unit	Sq. Ft. Total	Stu. Sta. Unit	Stu. Stat. Total.
<b>TEACHER PLANNING</b>							
315	2	General Areas		500	1,000		
<b>TOTAL</b>					<b>1,000</b>		<b>0</b>

**VIII. PROGRAM FURNITURE AND EQUIPMENT**

**A. General Teacher Planning Area**

No. of Items	Contractor Provided	District Provided (FF&E)	Description
		X	Vending machine(s)
1-2		X	Copier
6		X	Computers
6		X	Printers

Teacher Planning

**DRAFT SCHEDULED FOR 04/19/06 BOARD MEETING**

<b>No. of Items</b>	<b>Contractor Provided</b>	<b>District Provided (FF&amp;E)</b>	<b>Description</b>
1-2		X	Work table
1	X		Microwave
1	X		Refrigerator
2	X		Tack board, 4' x 4'
1	X		Clock
1	X		Stainless steel, double bowl, sink with separate goose neck faucet
	X		Built-ins (refer to special considerations)
1	X		Mirror & vanity in staff restroom

**IX. SPECIAL CONSIDERATIONS - CONTRACTOR PROVIDED**

Refer to **GENERAL CONSIDERATIONS, GENERAL SECURITY CONSIDERATIONS AND TRAFFIC CONTROL.**

- A. **Heating/Cooling/Ventilation** - As required to Meet District Standards.
- B. **Acoustical** - As required to Meet District Standards.
- C. **Floor** - As required to Meet District Standards.
- D. **Walls** - As required to Meet District Standards.
- E. **Ceiling** - As required to Meet District Standards.
- F. **Lighting** - As required to Meet District Standards.
- G. **Windows** - As required to Meet District Standards.
- H. **Doors** - As required to Meet District Standards.
- I. **Plumbing Fixtures/Water** - As required to Meet District Standards.
- J. **Communications** - As required to Meet District Standards.
- K. **Electrical** - As required to Meet District Standards.
- L. **Instructional Technology** - As required to Meet District Standards.
- M. **Gas and Air** - As required to Meet District Standards.
- N. **Safety** - As required to Meet District Standards.
- O. **Fencing** - As required to Meet District Standards.
- P. **Service Drives** - As required to Meet District Standards.

Teacher Planning

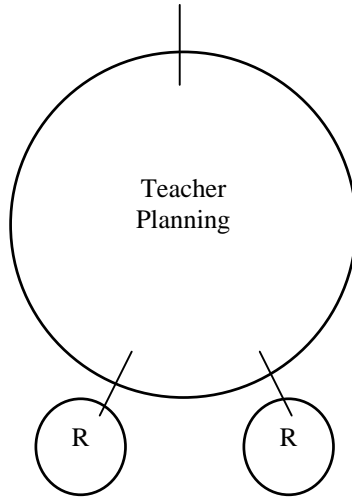


**Q. Parking** - As required to Meet District Standards.

**P. Built-ins** -

1. Provide mirror and shelf over sinks in restrooms.
2. Full-length mirror in restrooms.
3. Provide teacher carrels with lockable pedestal to accommodate six (6) teachers with computer and printer. Provide lockable upper cabinets above teacher carrels. The teacher carrels shall have grommets for wire management.
4. Provide base cabinet with sink and adjustable shelves and upper cabinets with adjustable shelves along one wall.

**SPATIAL RELATIONSHIPS**  
**Teacher Planning**



R = Restrooms, Staff

Teacher Planning

**Facility Space Summary**

Hagen Road Elementary School  
 Grades Pre-K – 5  
**Initial Student Stations (K-5): 809**  
**Initial Student Stations (Pre-K): 80**  
**Initial Student Stations Total: 889**  
**FISH Capacity: 889**  
**Program Capacity (K-5): 714**  
**Core Facilities: 960**  
**Future Student Stations: 151**  
**Total Student Stations (Pre-K-5): 1040**

Facility Area	Proposed		Future	
	Student Stations	Net Assign Square Feet (NASF)	Student Stations	Net Assign Square Feet (NASF)
Administrative/Student Services		5,340		
Art		1,375		
Classrooms				
Kindergarten	144	8,720		
Primary	288	15,840	108	5,940
Intermediate	352	15,120		
Skills Laboratory	0	1,980	18	990
Custodial		2,139		227
Exceptional Student Education	105	12,500	25	2,550
Food Services		9,670		
Media Center		5,707		
Music		1,445		
Physical Education		3,415		
Resource Rooms		1,560		780
Restrooms		1,867		317
Stage		1,950		
Teacher Planning		1,000		500
<b>Totals</b>	<b>889</b>	<b>89,627</b>	<b>151</b>	<b>11,304</b>
Mechanical @ 6%		5,378		678
<b>Total Net Sq. Ft.</b>		<b>95,005</b>		<b>11,982</b>
Circulation, Walls etc. @ 27%		25,651		3,235
<b>Total Gross Sq. Ft.</b>		<b>120,656</b>		<b>15,217</b>

# School FCAT Data Panel

Date: 07/27/05

## Hagen Road Elementary

## All Curriculum Groups

Title		03				04				05			
		W	B	H	T	W	B	H	T	W	B	H	T
FCAT WRITING PCT SCOR 3.0+ ABOVE	FEB 2001					87		83	87				
	FEB 2002					93	100	100	94				
	FEB 2003					100	100	100	100				
	FEB 2004					91	90	87	90				
	FEB 2005					96	86	88	93				
FCAT SSS READ LVL 3 & ABOVE	MAR 2001	85		29	62	54		19	40	75		22	60
	MAR 2002	66	57	46	59	75	100	60	73	70	63	43	60
	MAR 2003	59	63	77	67	80	57	54	71	80	57	50	74
	MAR 2004	84	71	83	83	83	70	64	76	67	36	48	58
	MAR 2005	88	86	62	82	81	71	78	80	74	64	67	72
FCAT SSS MATH LVL 3 & ABOVE	MAR 2001	79		32	55	42		23	33	80		33	66
	MAR 2002	59	57	46	56	64	43	53	58	60	25	43	51
	MAR 2003	67	63	66	67	73	29	46	62	74	43	43	65
	MAR 2004	79	43	69	75	77	70	62	71	71	36	45	60
	MAR 2005	86	100	62	81	87	57	66	76	77	64	63	71
FCAT NRT MEDIAN READ PR	MAR 2001	66	37	46	61	55	35	48	52	62	35	47	64
	MAR 2002	53	55	49	54	65	57	59	72	56	52	45	54
	MAR 2003	56	57	55	62	61	48	54	65	61	50	49	63
	MAR 2004	65	57	59	73	62	55	55	68	60	50	44	57
	MAR 2005	61	53	51	64	61	57	52	63	57	56	54	63
FCAT NRT MEDIAN MATH PR	MAR 2001	67	34	46	62	55	47	49	55	71	41	58	78
	MAR 2002	58	53	54	62	66	58	58	72	63	50	54	67
	MAR 2003	59	65	56	67	65	47	58	72	65	59	56	72
	MAR 2004	65	56	63	76	68	63	58	75	65	52	53	69
	MAR 2005	67	62	59	75	67	57	57	72	63	58	59	72

W = White, B = Black, H = Hispanic, T = Total Empty cells indicate that tests were not administered or too few students were tested.

AYP = Y  
School Grade = A